

AEROSOL PARTICLE SIZE DISTRIBUTIONS AT A TRAFFIC EXPOSED SITE AND AN URBAN BACKGROUND LOCATION IN OPORTO, PORTUGAL

César Oliveira*, Célia Alves e Casimiro A. Pio

Centro de Estudos do Ambiente e do Mar, Departamento de Ambiente e Ordenamento, Universidade de Aveiro, Campus de Santiago, 3810-193 Aveiro, Portugal



Figure 1S. Location of sampling sites and the most relevant anthropogenic sources

*e-mail: cesar.oliveira@ua.pt

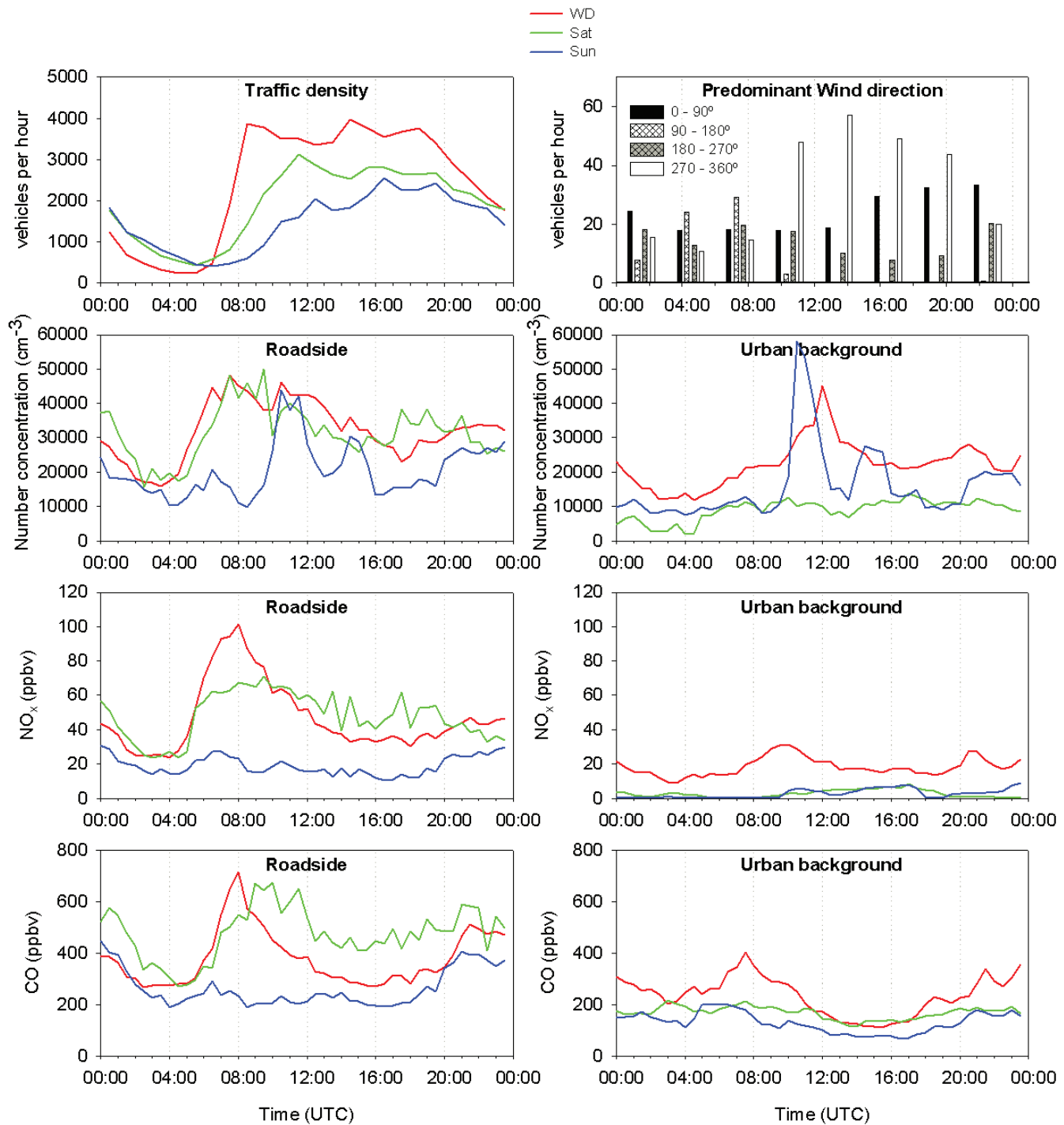


Figure 2S. Weekdays (WD), Saturdays (Sat) and Sundays average diurnal profiles for traffic counting, particle number concentrations, nitrogen oxides and carbon monoxide

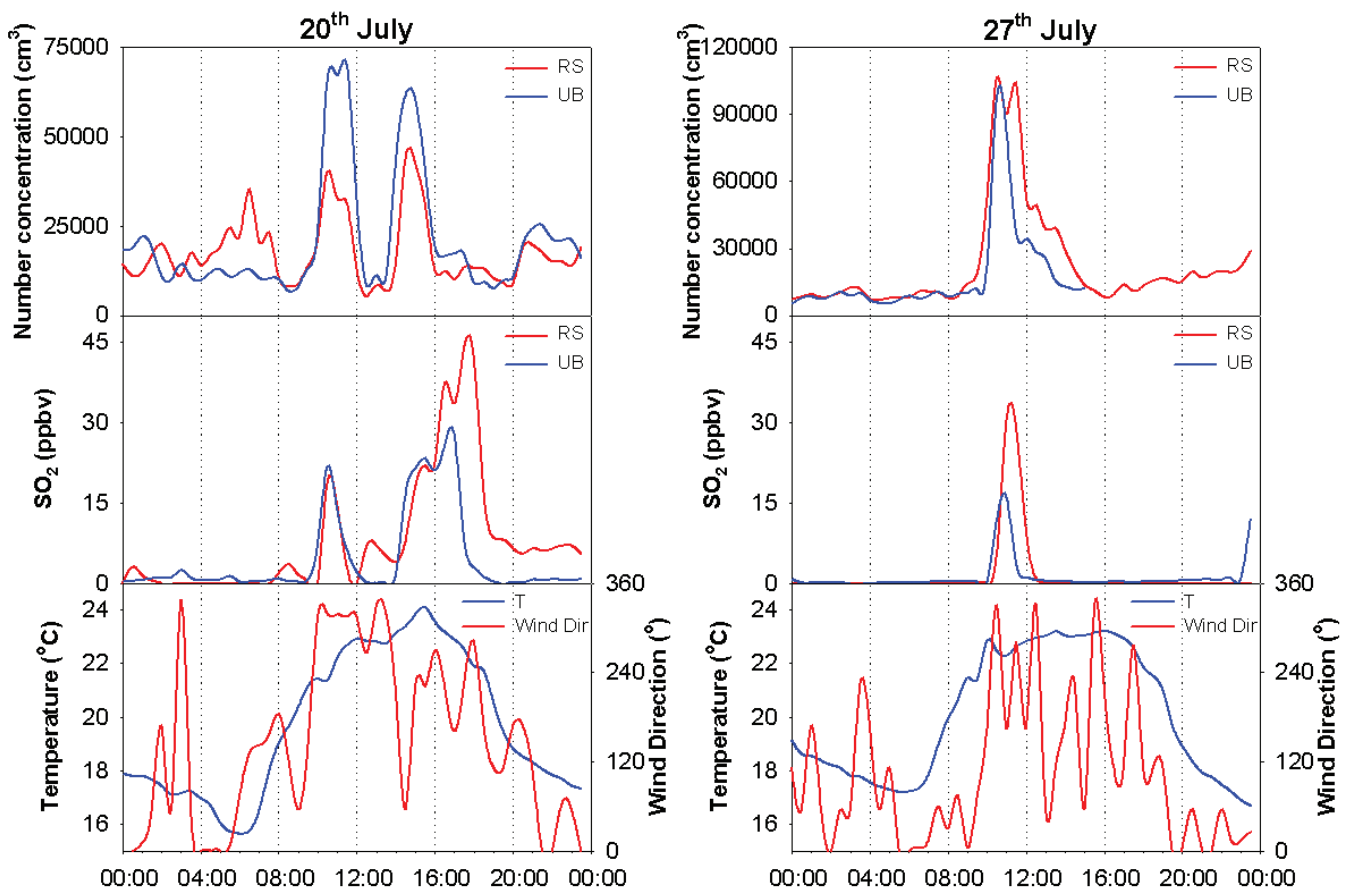


Figure 3S. Episodic patterns with high levels of ultrafine particles connected to peaks of SO₂

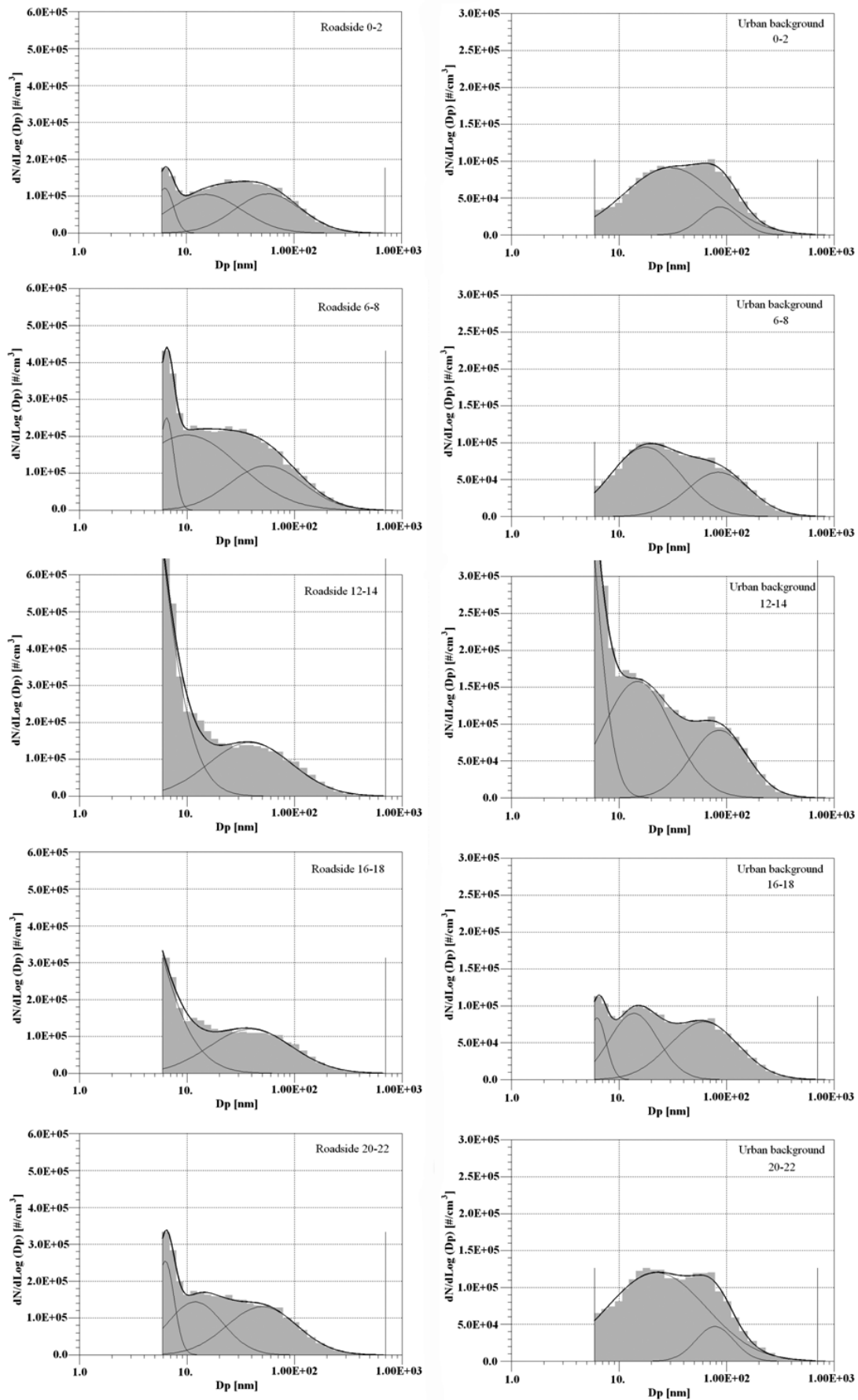


Figure 4S. Average particle number size distributions at the roadside and urban background stations during weekday, 2 h periods