

ESTUDO DA ADSORÇÃO DE COMPOSTOS SULFURADOS EMPREGANDO ZEÓLITAS CONTENDO ZINCO

Álvaro L. Malvesti, Marcelo L. Mignoni, Robison P. Scherer, Fábio G. Penha e Sibele B. C. Pergher*

Departamento de Química, Universidade Regional Integrada do Alto Uruguai e das Missões, Av. Sete de Setembro, 1621, 99700-000 Erechim – RS, Brasil

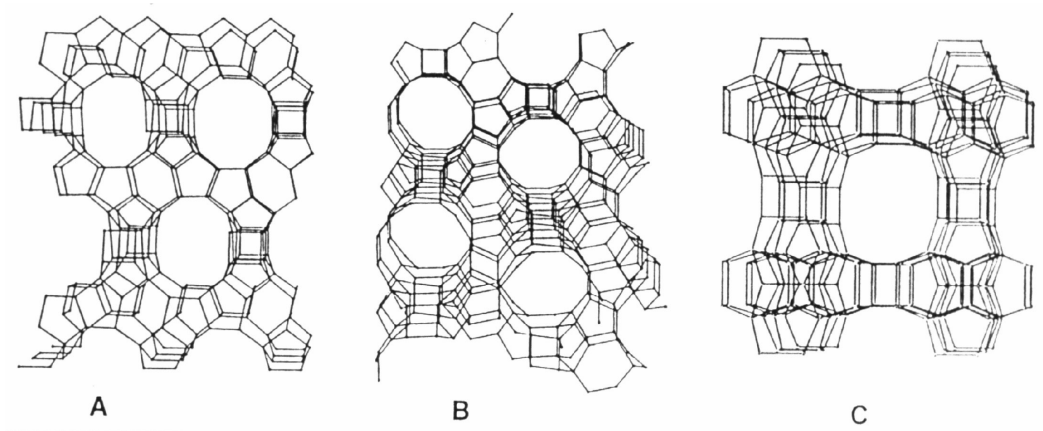


Figura 1S. Polimorfos A, B e C da zeólita Beta

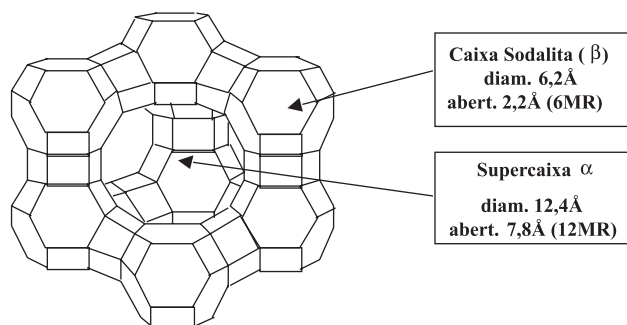


Figura 2S. Estrutura demonstrativa da zeólita NaY

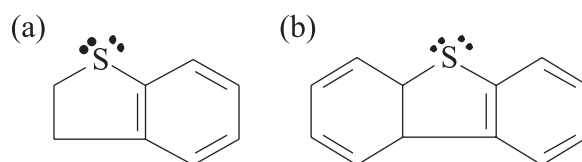


Figura 3S. Compostos sulfurados: (a) benzotiofeno e (b) dibenzotiofeno

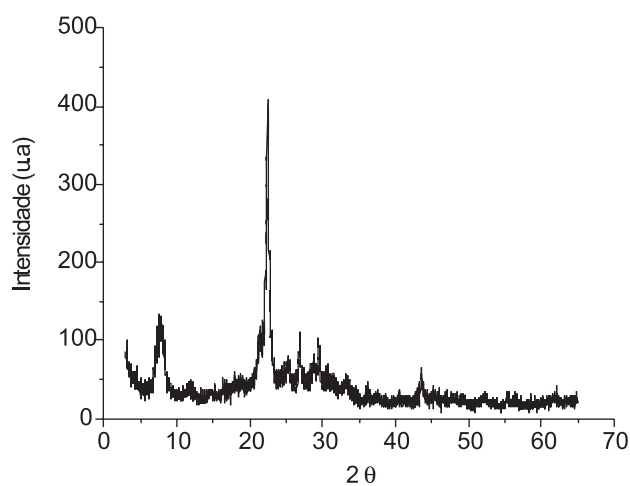


Figura 4S. Difratoograma de raios-X da zeólita Beta com zinco

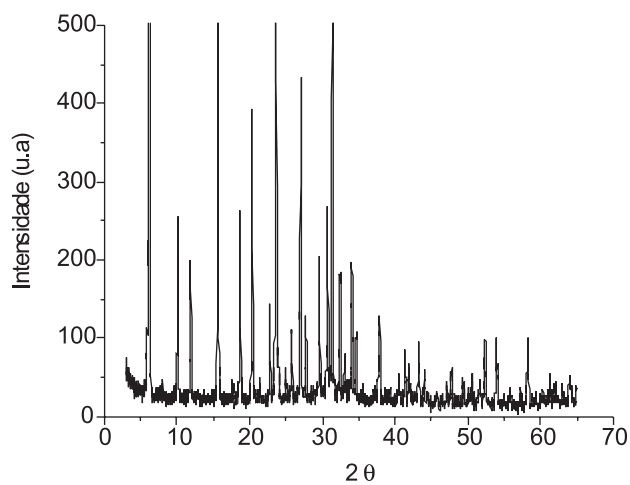


Figura 5S. Difratoograma de raios-X da zeólita NaY com zinco