

Figura 2S. Expansão 1 do espectro de RMN ^1H (300 MHz, CDCl_3 , TMS, δ) da mistura **7c** e **8c**

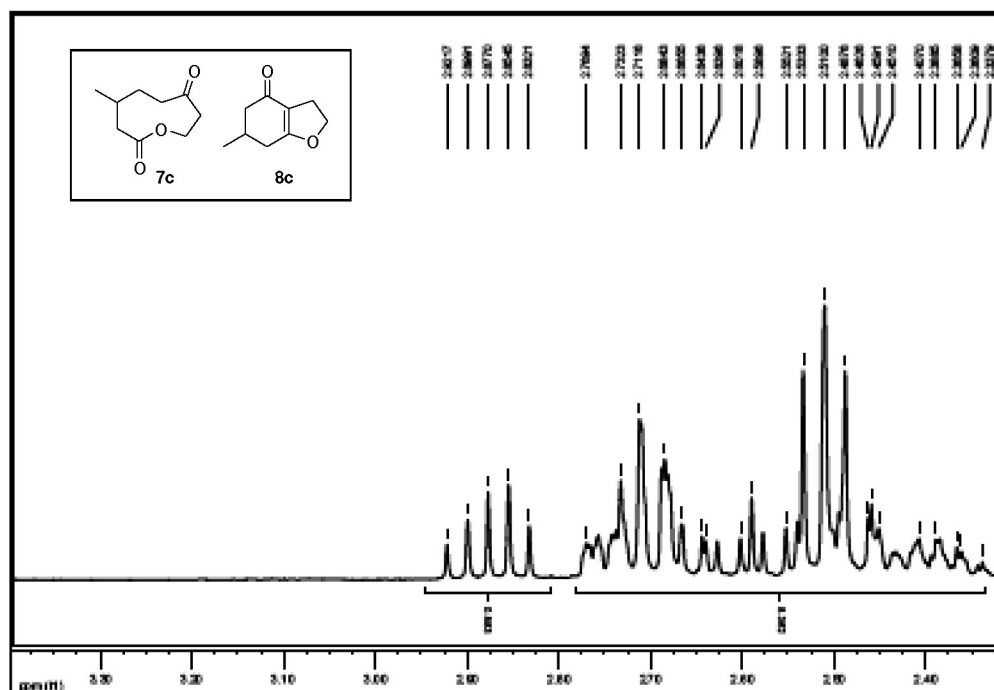


Figura 3S. Expansão 2 do espectro de RMN ^1H (300 MHz, CDCl_3 , TMS, δ) da mistura **7c** e **8c**

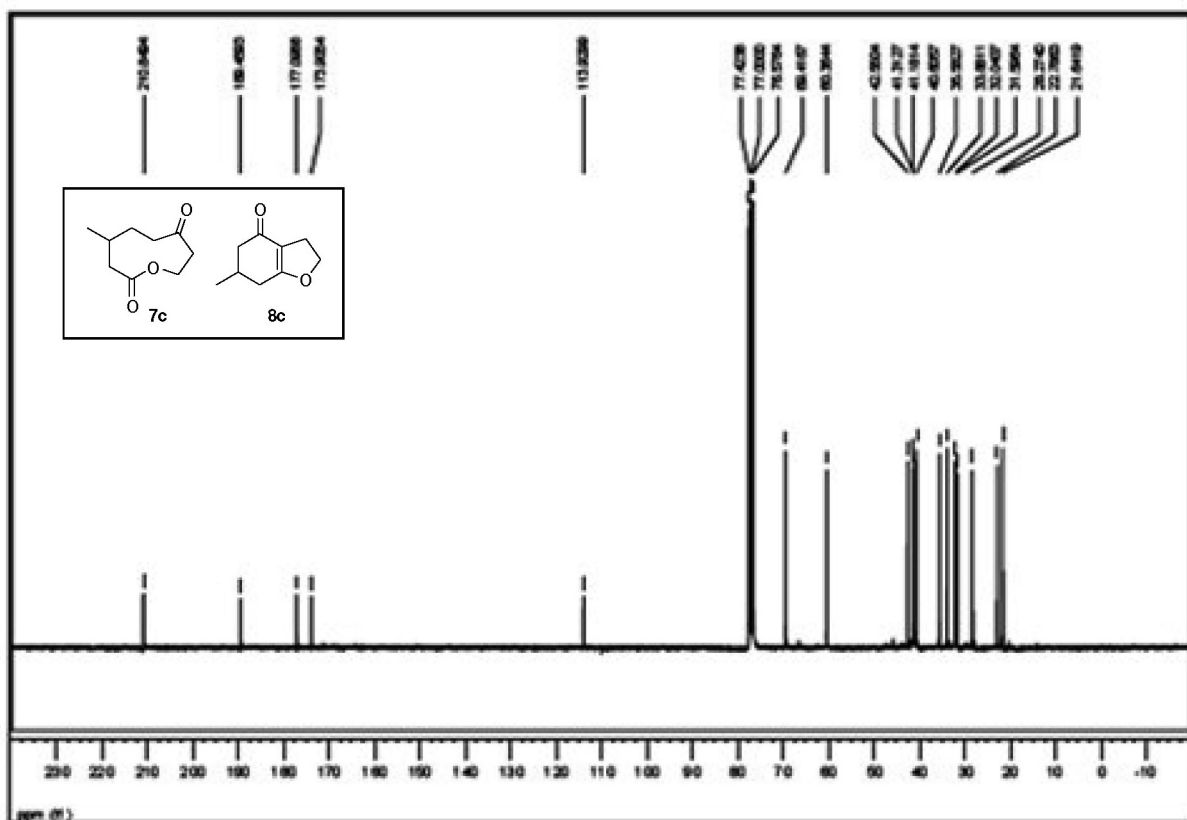


Figura 4S. Espectro de RMN ^{13}C (75 MHz, CDCl_3 , TMS, δ) da mistura 7c e 8c

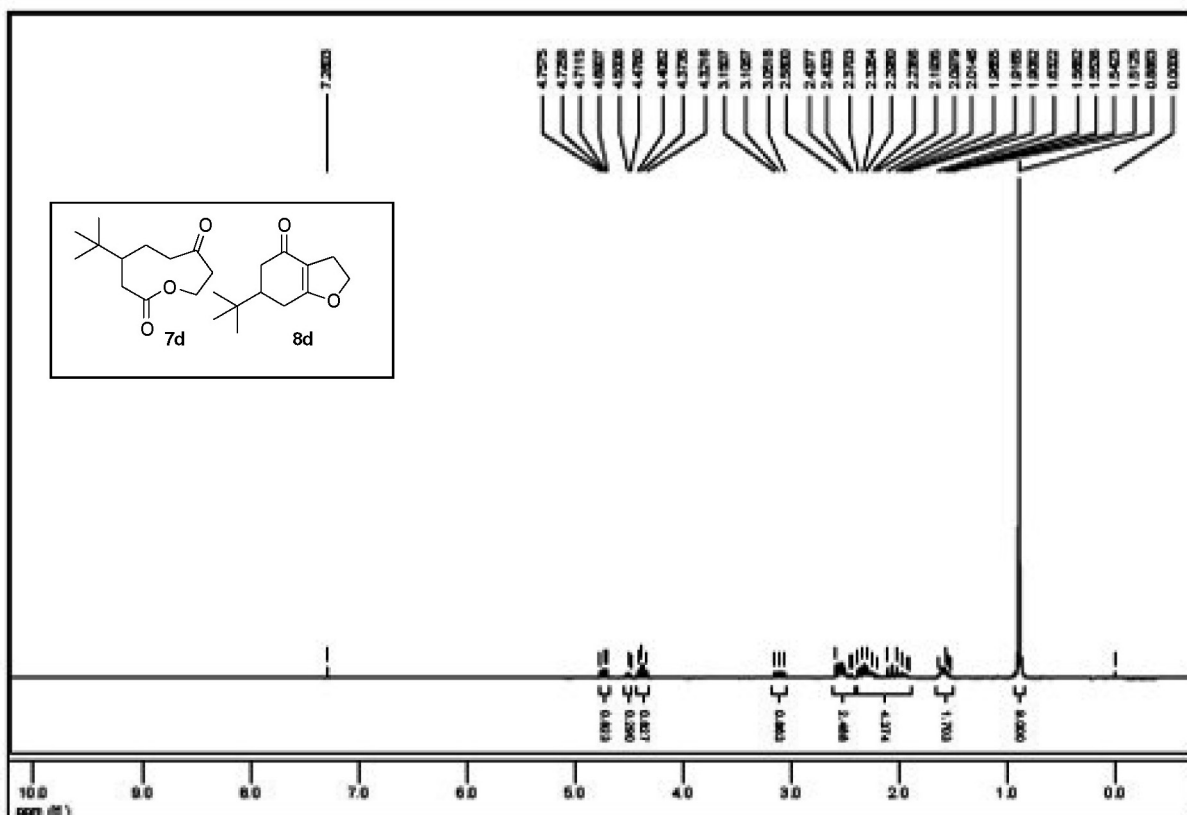


Figura 5S. Espectro de RMN ^1H (300 MHz, CDCl_3 , TMS, δ) da mistura 7d e 8d

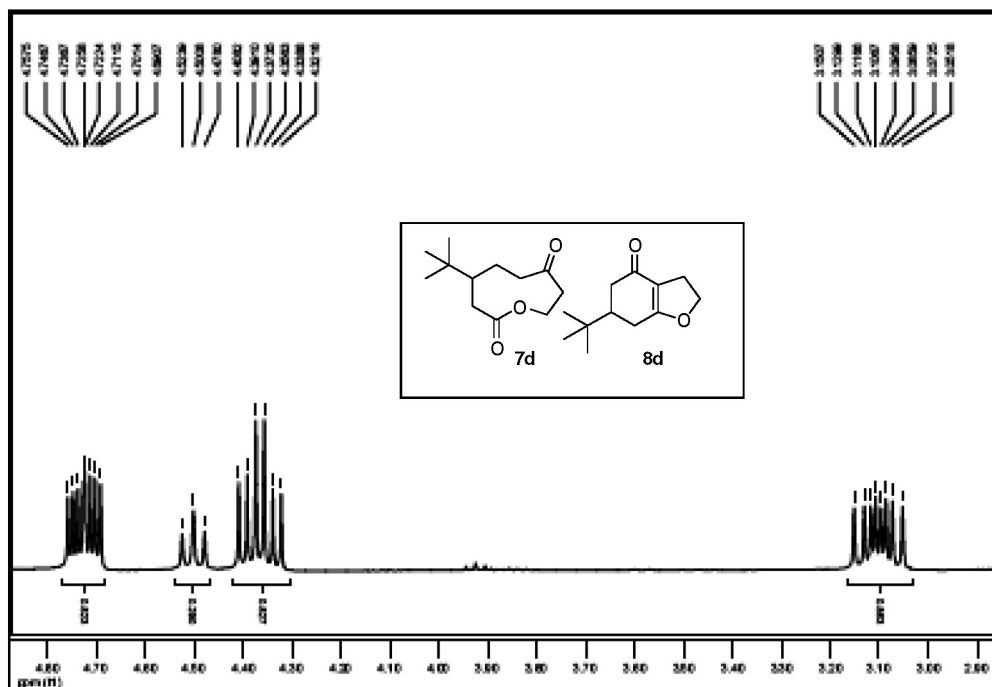


Figura 6S. Expansão 1 do espectro de RMN ^1H (300 MHz, CDCl_3 , TMS, δ) da mistura 7d e 8d

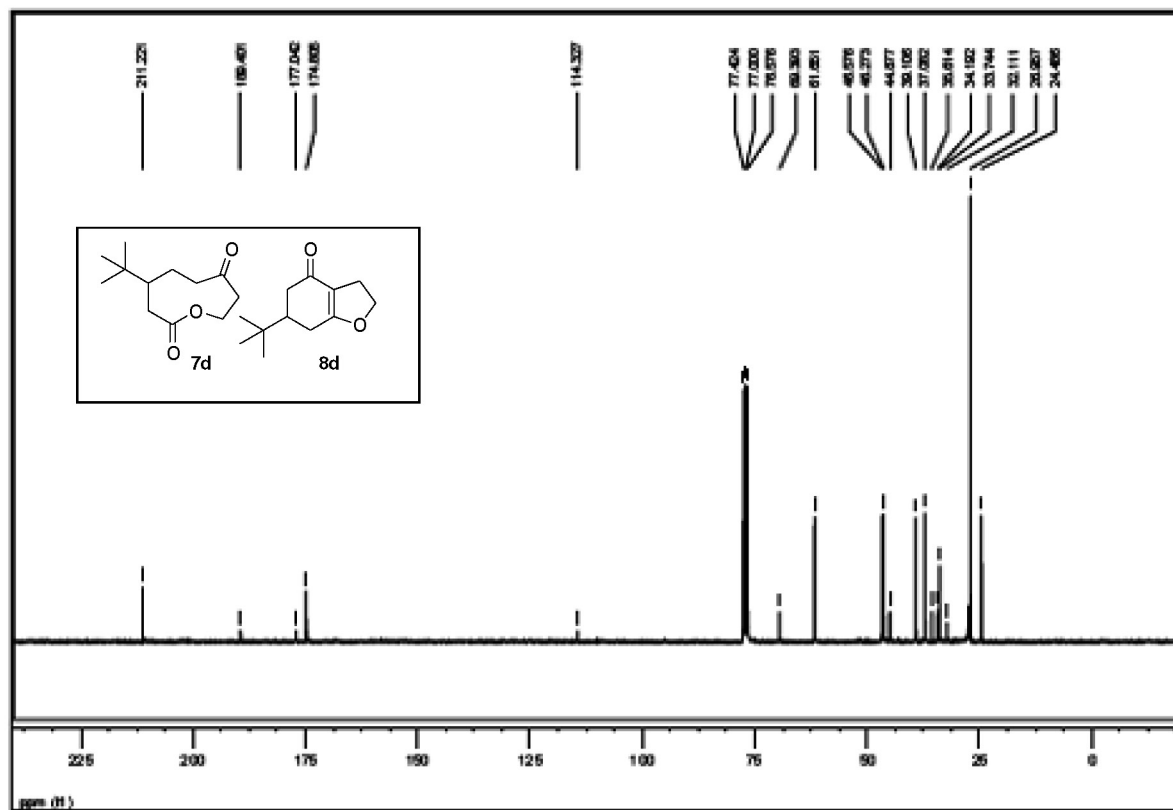


Figura 7S. Espectro de RMN ^{13}C (75 MHz, CDCl_3 , TMS, δ) da mistura 7d e 8d

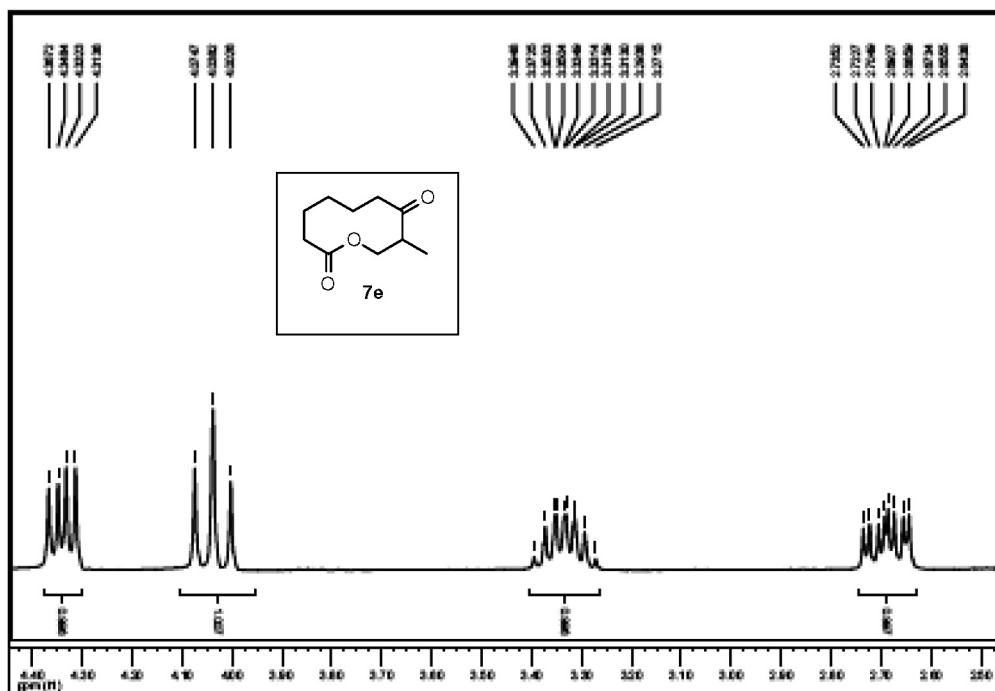


Figura 10S. Expansão 1 do espectro de RMN ¹H (300 MHz, CDCl₃, TMS, δ) da lactona 7e

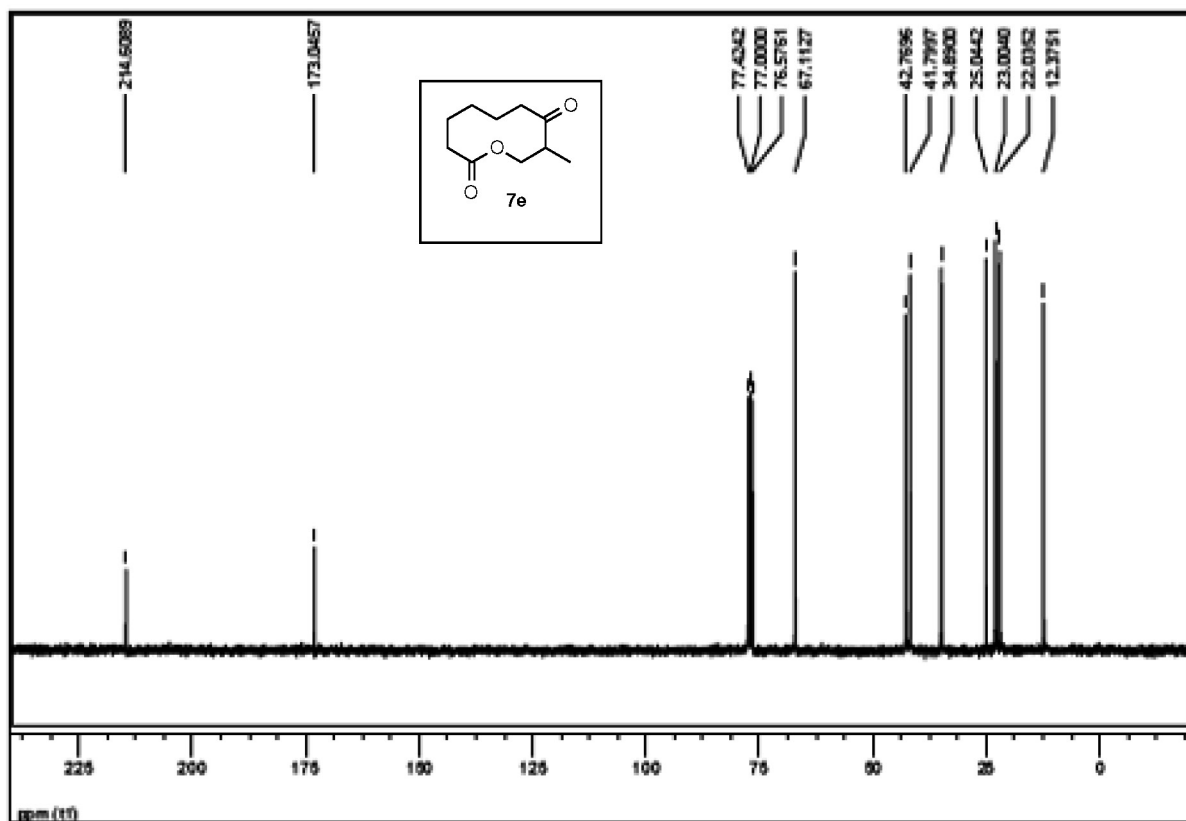


Figura 11S. Espectro de RMN ¹³C (75 MHz, CDCl₃, TMS, δ) da lactona 7e

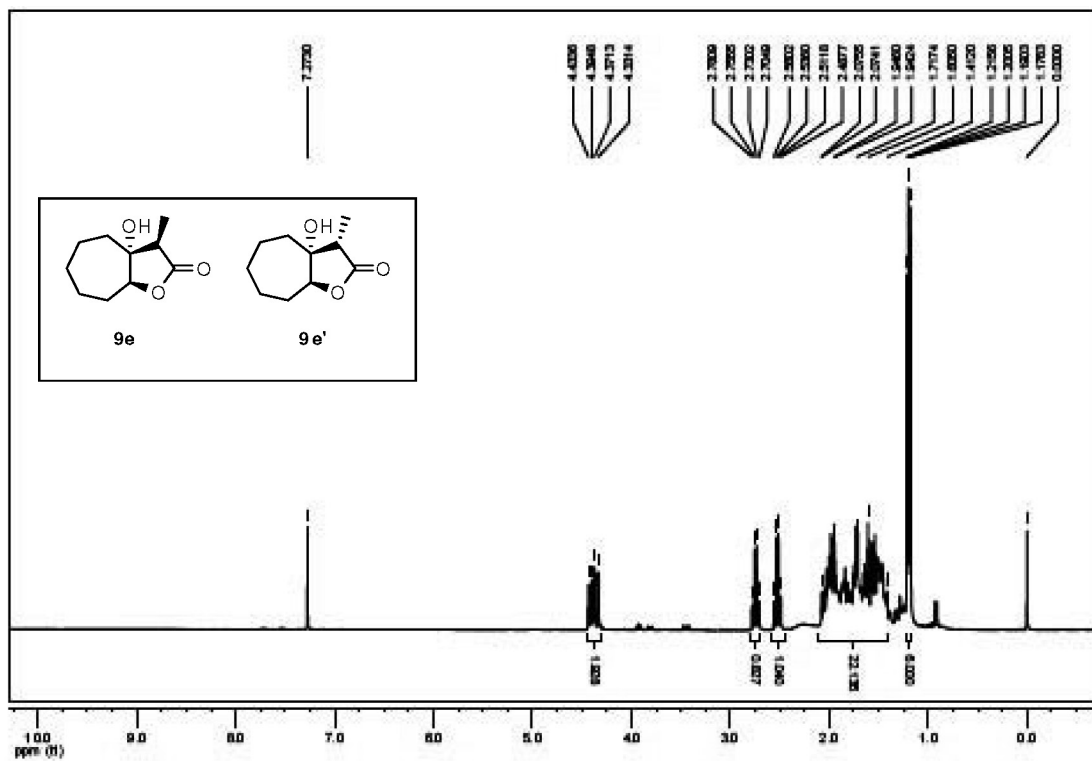


Figura 12S. Espectro RMN ¹H (300 MHz, CDCl₃, TMS, δ) da mistura 9e/9e'

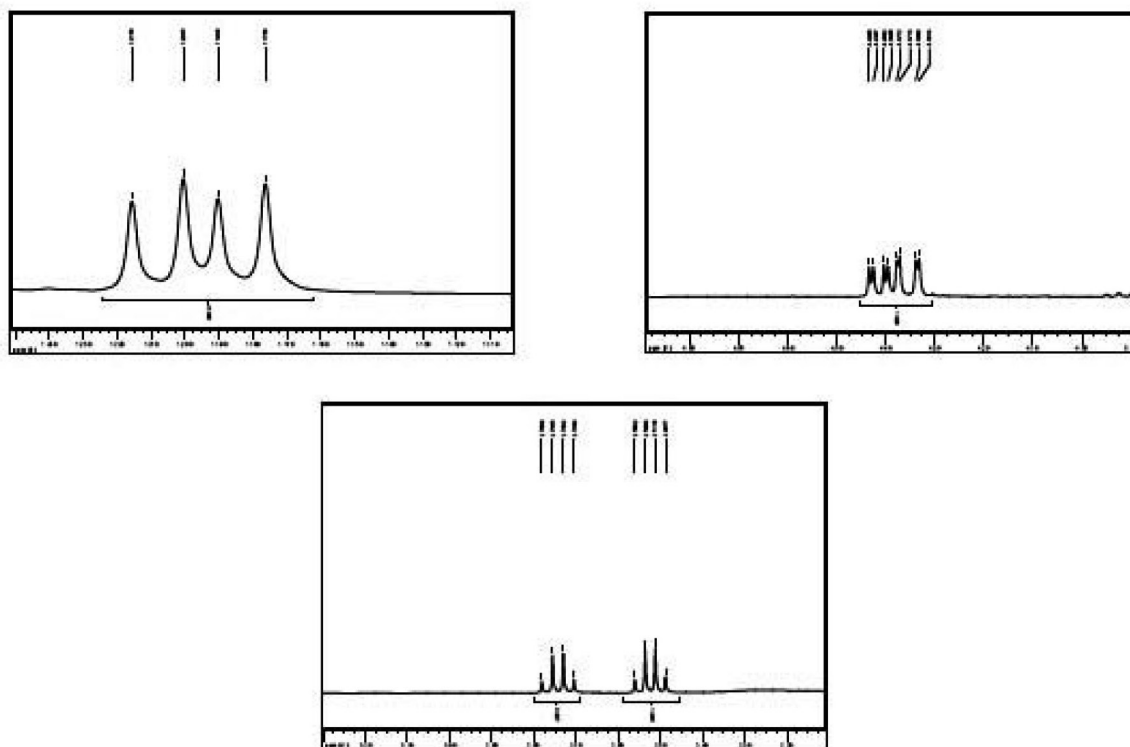


Figura 13S. Expansões dos sinais do espectro RMN ¹H (300 MHz, CDCl₃, TMS, δ) da mistura 9e/9e'

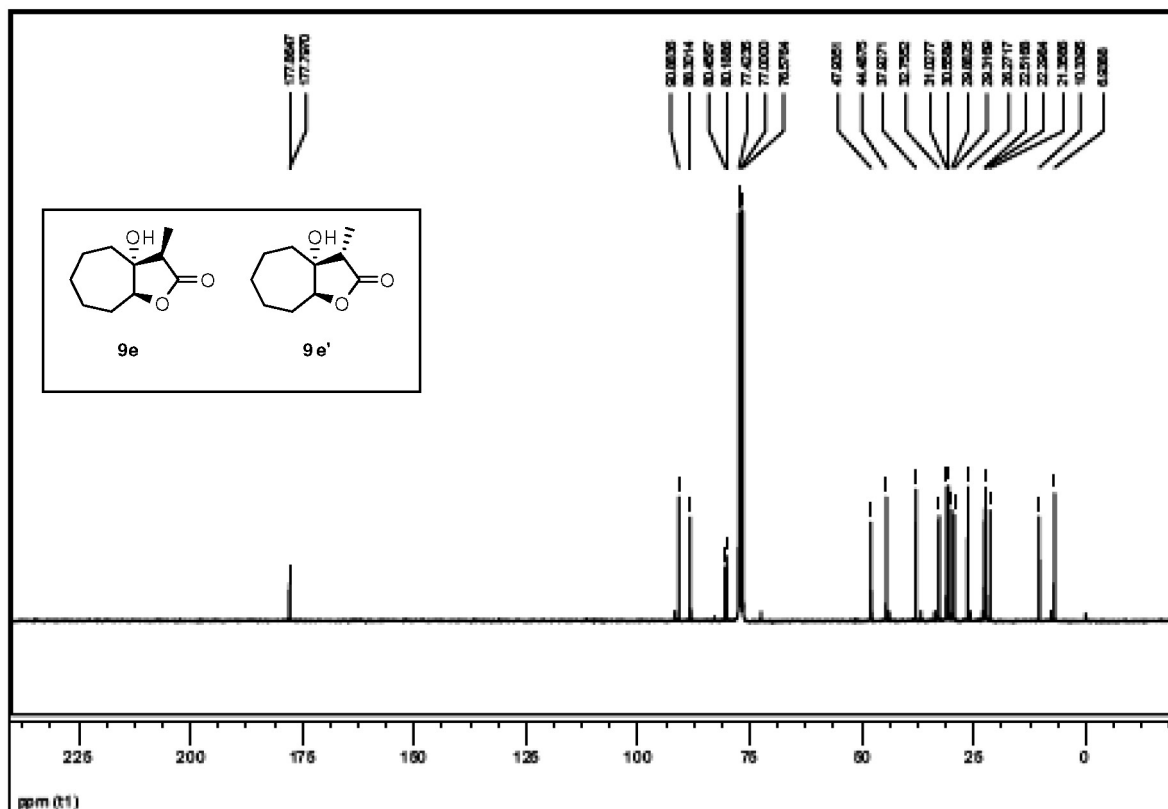


Figura 14S. Espectro de RMN ^{13}C (75 MHz, CDCl_3 , TMS, δ) da mistura 9e/9e'

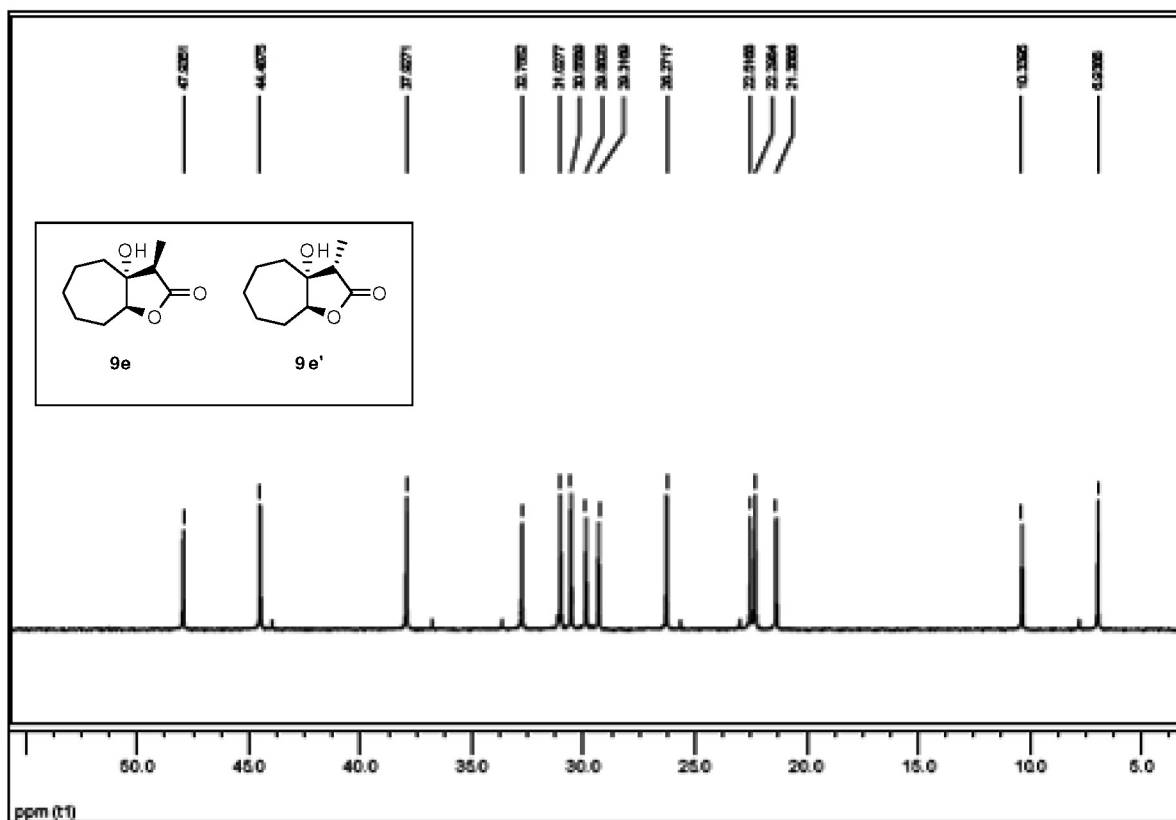


Figura 15S. Expansão 1 do espectro de RMN ^{13}C (75 MHz, CDCl_3 , TMS, δ) da mistura 9e/9e'

OBSERVAÇÃO:

Para os espectros de RMN ^1H e ^{13}C das demais lactonas deste artigo ver o material suplementar da ref. 12.