

AIR POLLUTION AND EMERGENCY ADMISSIONS FOR CARDIORESPIRATORY DISEASES IN LISBON (PORTUGAL)

Célia A. Alves*

Centro de Estudos do Ambiente e do Mar, Departamento de Ambiente e Ordenamento, Universidade de Aveiro, 3810-193 Aveiro, Portugal

Manuel G. Scotto

Departamento de Matemática, Universidade de Aveiro, 3810-193 Aveiro, Portugal

Maria do Carmo Freitas

Instituto Tecnológico e Nuclear, E.N. 10, 2686-953 Sacavém, Portugal

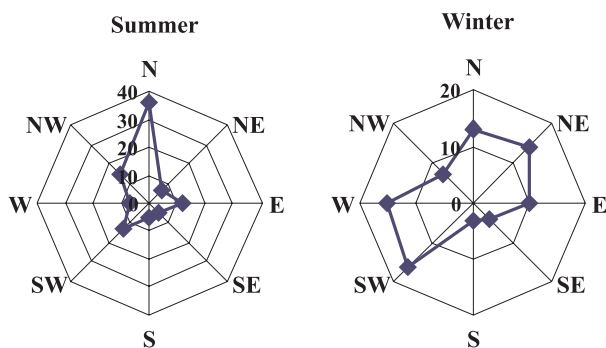


Figure 1S. Frequencies of wind directions in Lisbon. Values are given in percentage

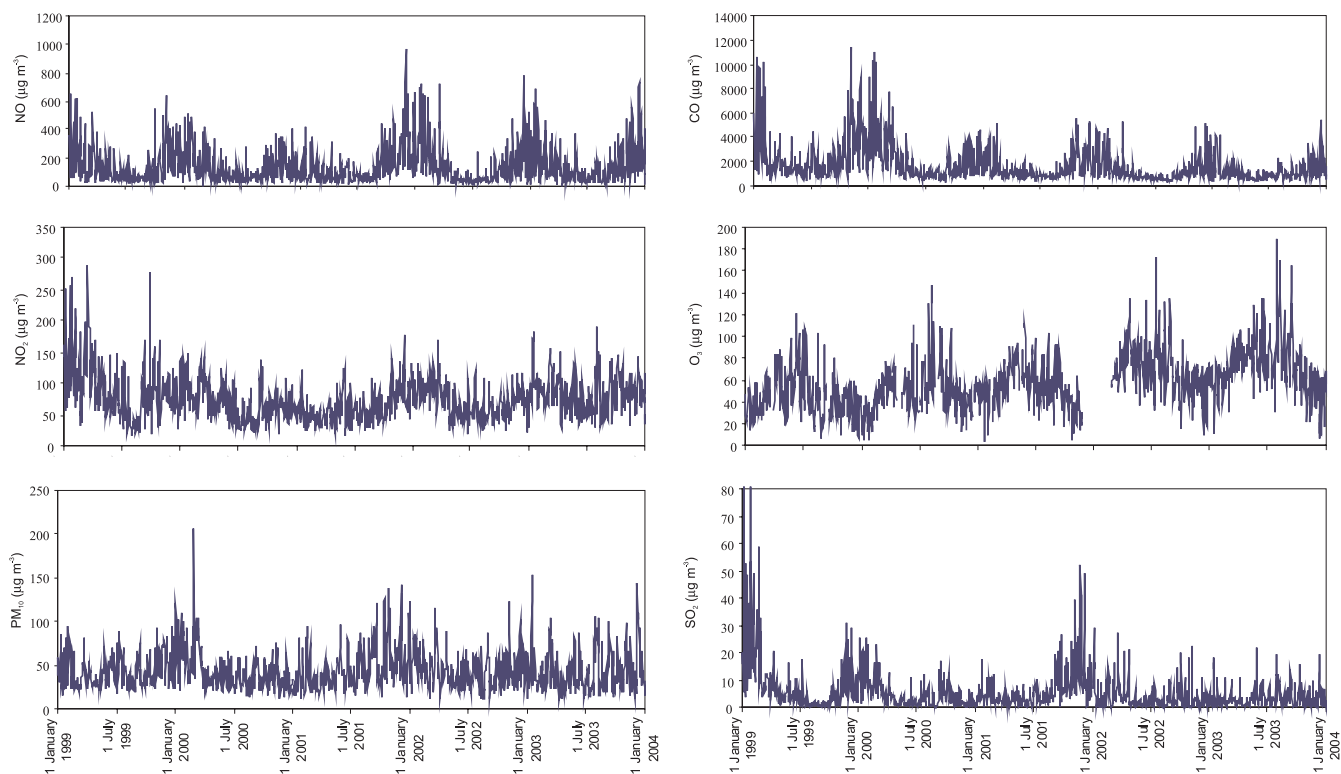


Figure 2S. Daily averages for the air pollution variable over the 1999-2004 period

*e-mail: celia.alves@ua.pt

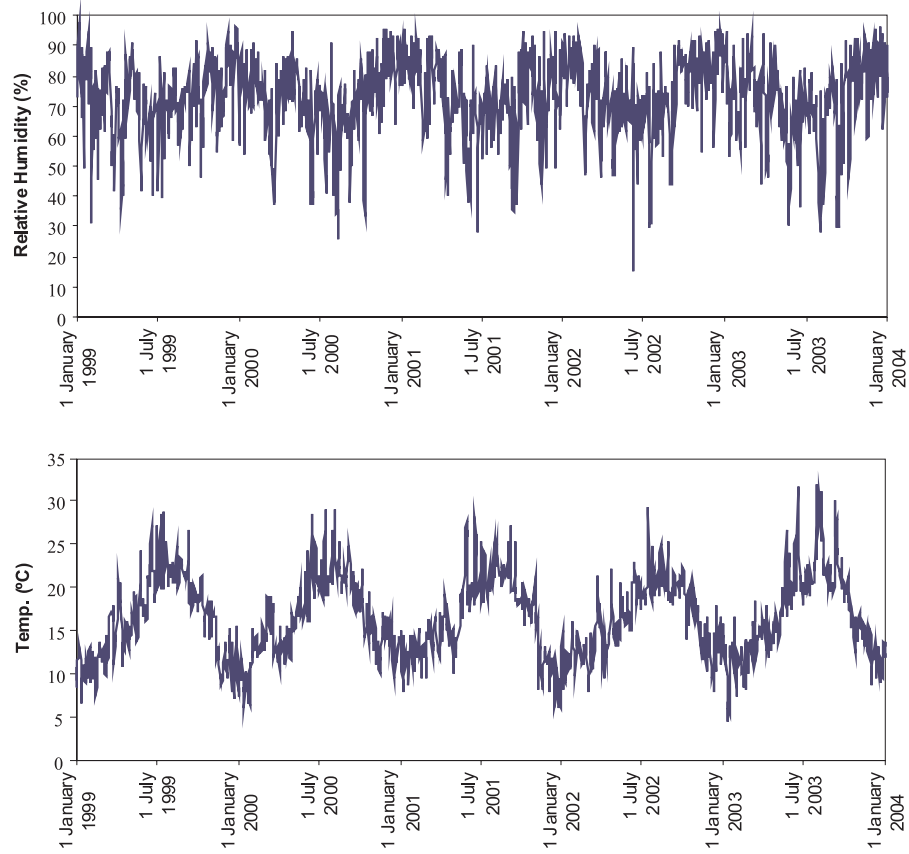


Figure 3S. Daily averages for the meteorological parameters over the 1999-2004 period