

POLY(ETHYLENE-CO-METHYL ACRYLATE)/POLY(CAPROLACTONE) TRIOL BLENDS FOR DRUG DELIVERY SYSTEMS: CHARACTERIZATION AND DRUG RELEASE

Luiz A. Kanis*

Universidade do Sul de Santa Catarina, Av. José Acácio Moreira, 787, 88704-900 Tubarão - SC, Brasil

Valdir Soldi

Departamento de Química, Universidade Federal de Santa Catarina, CP 476, 88040-900 Florianópolis - SC, Brasil

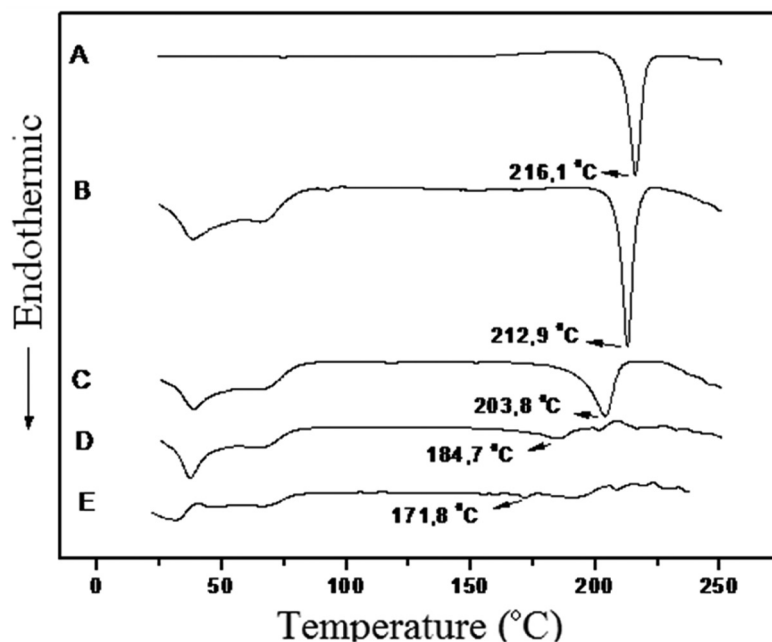


Figure 1S. DSC plots of DZ (A) and EMA/PCL-T/DZ films: (B) 80/0/20, (C) 70/10/20; (D) 60/20/20 and (E) 50/30/20

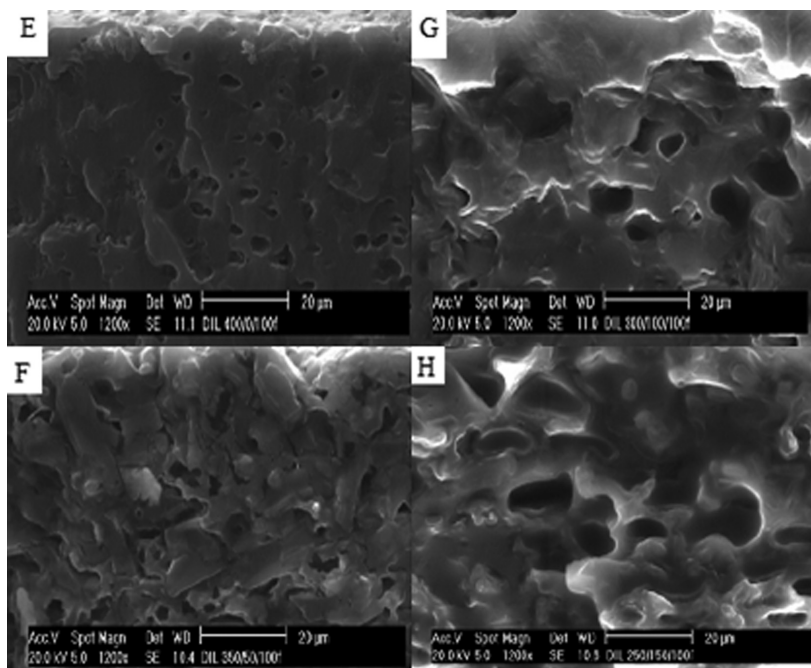


Figure 2S. SEM micrographs of EMA/PCL-T/DZ film cross-sections - 80/0/20 (E), 70/10/20 (F), 60/20/20 (G) and 50/30/20 (H)

*e-mail: luiz.kanis@unisul.br