

**A QUANTITATIVE VALIDATED METHOD USING LIQUID CHROMATOGRAPHY AND CHEMOMETRIC ANALYSIS FOR EVALUATION OF RAW MATERIAL OF *Maytenus ilicifolia* (SCHRAD.) PLANCH., CELASTRACEAE**

**Flávio Luís Beltrame\***

Departamento de Ciências Farmacêuticas, Universidade Estadual de Ponta Grossa, Av. General Carlos Cavalcanti, 4748, 84030-900 Ponta Grossa - PR, Brasil

**Rubiana Mara Mainardes e Najeh Maissar Khalil**

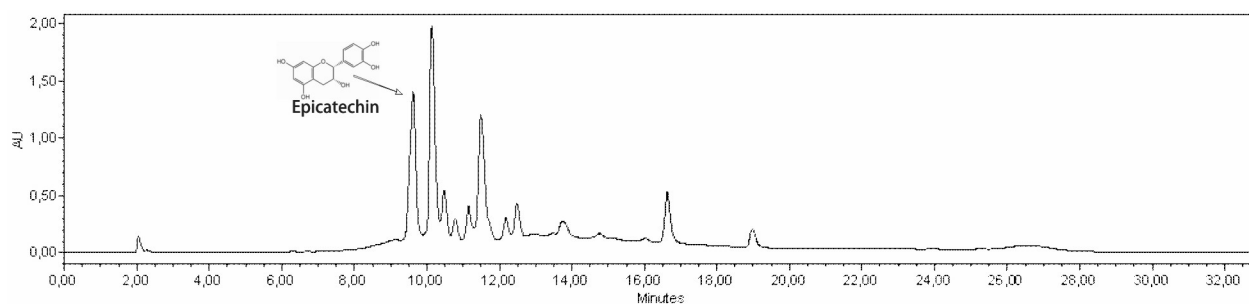
Departamento de Farmácia, Universidade Estadual do Centro-Oeste. Rua Simeão Camargo Varela de Sá, 3, 85040-080 Guarapuava - PR, Brasil

**Rosilene Aparecida Prestes, Alessandro Nogueira e Ivo Mottin Demiate**

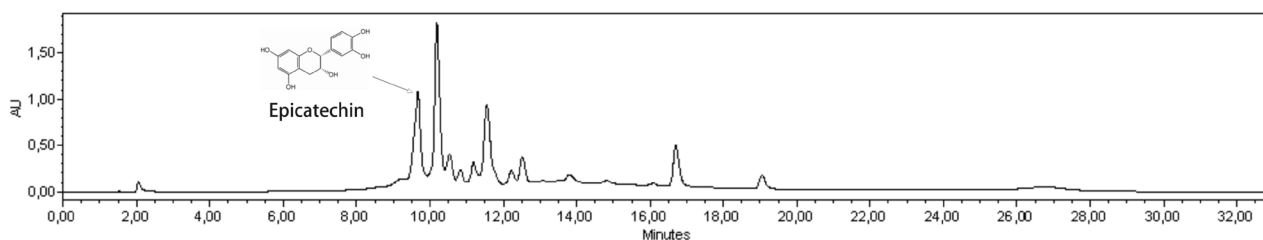
Departamento de Engenharia de Alimentos, Universidade Estadual de Ponta Grossa, Av. General Carlos Cavalcanti, 4748, 84030-900 Ponta Grossa - PR, Brasil

**Quezia Bezerra Cass**

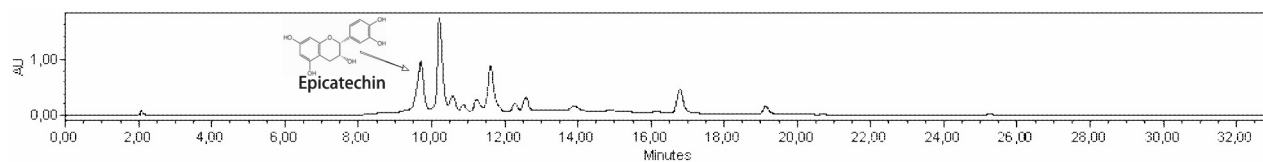
Departamento de Química, Universidade Federal de São Carlos, CP 676, 13560-970 São Carlos - SP, Brasil



**Figure 1S.** Chromatographic profile of hydroalcoholic extract of *Maytenus ilicifolia*. Chromatographic conditions are described in the text. Sample sold as *espinheira santa* in Maringá city

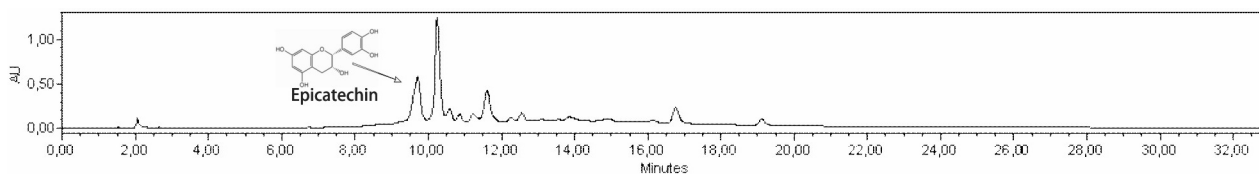


**Figure 2S.** Chromatographic profile of hydroalcoholic extract of *Maytenus ilicifolia*. Chromatographic conditions are described in the text. Sample sold as *espinheira santa* in Londrina city

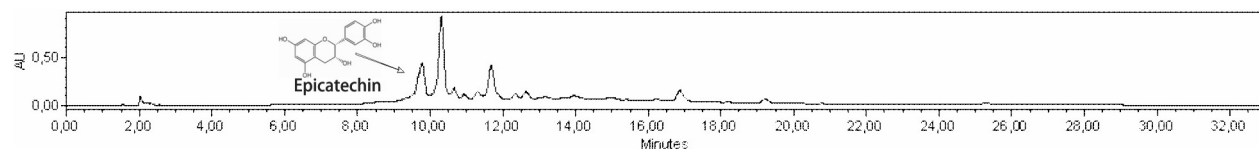


**Figure 3S.** Chromatographic profile of hydroalcoholic extract of *Maytenus ilicifolia*. Chromatographic conditions are described in the text. Sample sold as *espinheira santa* in Marialva city

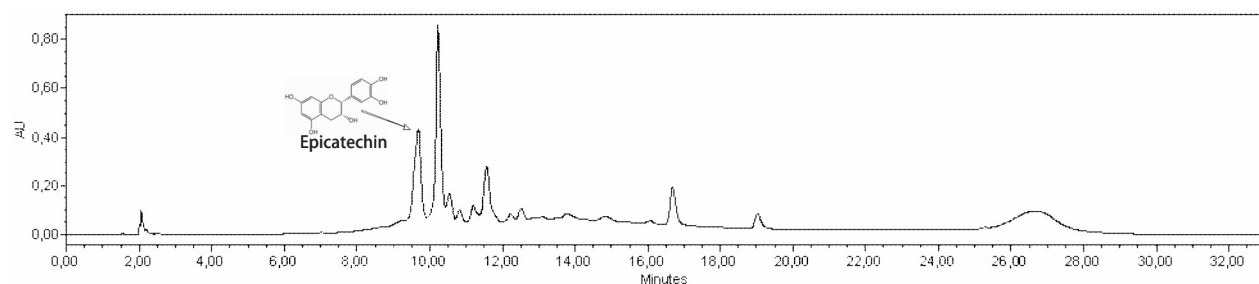
\*e-mail: flaviobeltra@gmail.com



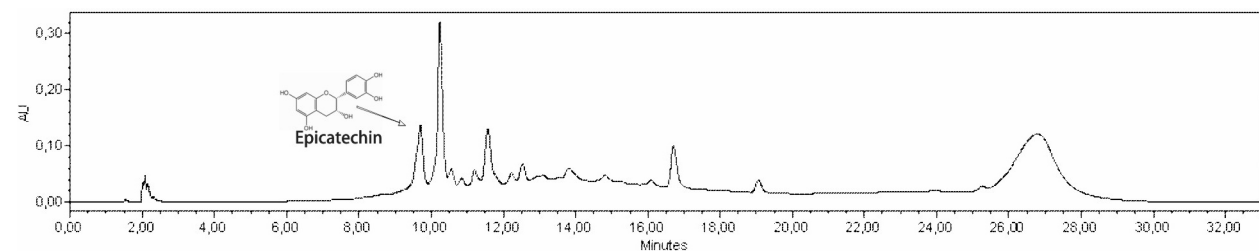
**Figure 4S.** Chromatographic profile of hydroalcoholic extract of *Maytenus ilicifolia*. Chromatographic conditions are described in the text. Sample sold as *espinheira santa* in Curitiba city



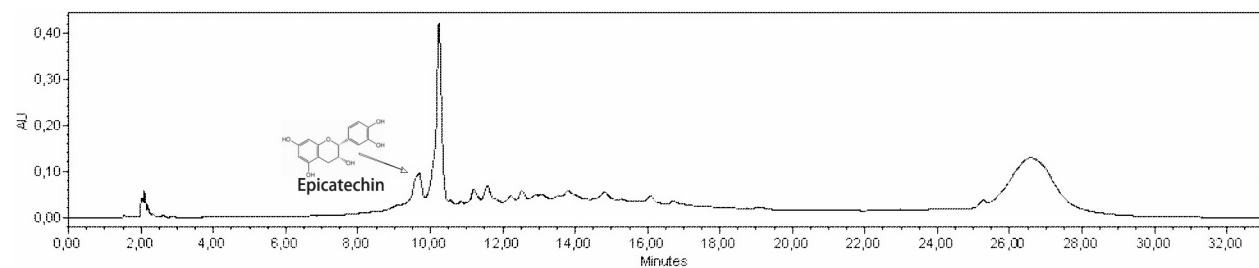
**Figure 5S.** Chromatographic profile of hydroalcoholic extract of *Maytenus ilicifolia*. Chromatographic conditions are described in the text. Sample sold as *espinheira santa* in Maringá city



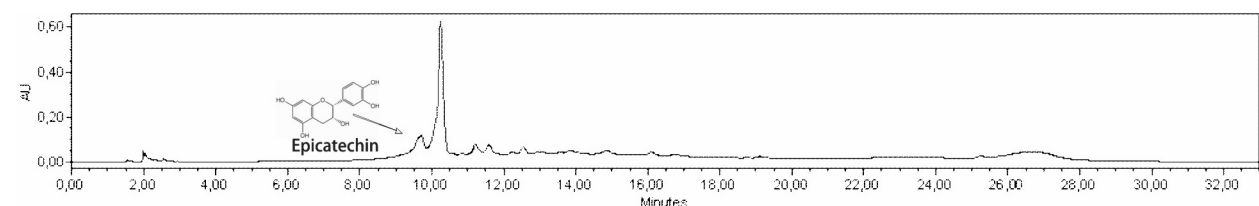
**Figure 6S.** Chromatographic profile of hydroalcoholic extract of *Maytenus ilicifolia*. Chromatographic conditions are described in the text. Sample sold as *espinheira santa* in Ortigueira city



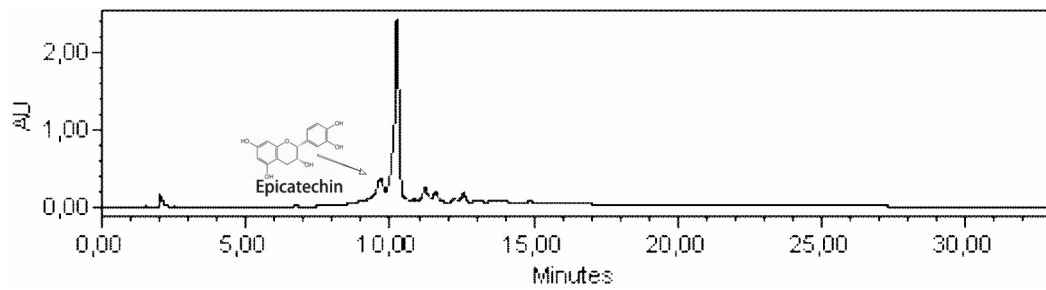
**Figure 7S.** Chromatographic profile of hydroalcoholic extract of *Maytenus ilicifolia*. Chromatographic conditions are described in the text. Sample sold as *espinheira santa* in Curitiba city



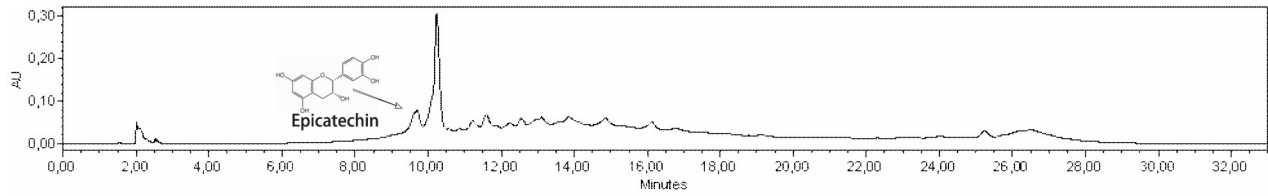
**Figure 8S.** Chromatographic profile of hydroalcoholic extract of *Maytenus ilicifolia*. Chromatographic conditions are described in the text. Sample sold as *espinheira santa* in Toledo city



**Figure 9S.** Chromatographic profile of hydroalcoholic extract of *Maytenus ilicifolia*. Chromatographic conditions are described in the text. Sample sold as *espinheira santa* in Colombo city



**Figure 10S.** Chromatographic profile of hydroalcoholic extract of *Maytenus ilicifolia*. Chromatographic conditions are described in the text. Sample sold as *espinheira santa* in Mandaguari city



**Figure 11S.** Chromatographic profile of hydroalcoholic extract of *Maytenus ilicifolia*. Chromatographic conditions are described in the text. Sample sold as *espinheira santa* in Uraí city