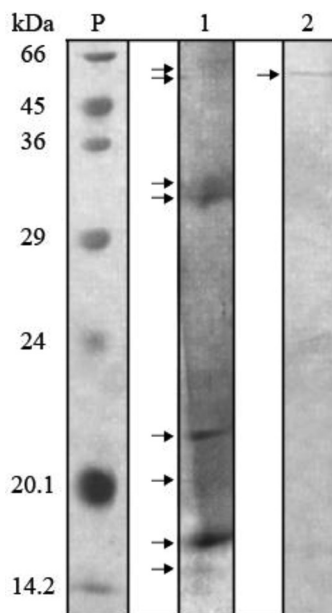


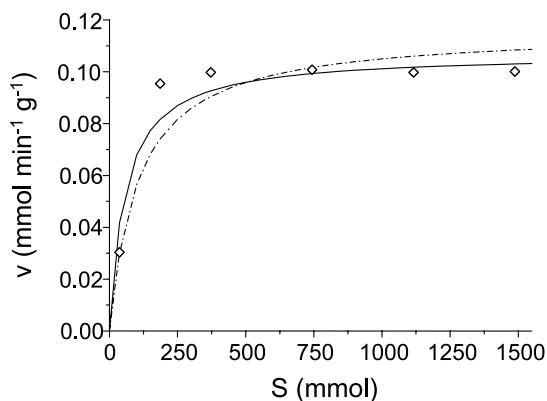
BIOCHEMICAL CHARACTERISATION OF LIPASE FROM A NEW STRAIN OF *Bacillus* SP. ITP-001

José Murillo P. Barbosa, Ranyere L. Souza, Cláudia Moura de Melo, Alini T. Fricks, Cleide Mara F. Soares e Álvaro S. Lima\*

Instituto de Tecnologia e Pesquisa, Av. Murilo Dantas, 300, 49032-490 Aracaju - SE, Brasil



**Figure 1S.** SDS-PAGE analysis of purified lipase from *Bacillus* sp. ITP-001. The purity of partitioned lipase was assessed by 12.5% SDS-PAGE analysis. The molecular weights of the standard protein marker ranged between 14.2 and 66 kDa. SDS-PAGE – Lane P: protein molecular markers; lane 1: fermented broth; lane 2: purified lipase from *Bacillus* sp. ITP-001



**Figure 2S.** Plot kinetic parameters of purified lipase from *Bacillus* sp. ITP-001 using olive oil as a substrate. Solid line: Adjusted; Dash Dot line: Eadie-Scatcharel; Diamond: Experimental results