

SESQUITERPENOS DE *Ocotea lancifolia* (Lauraceae)

Maria José de Camargo, Mayker Lazaro Dantas Miranda, Camila Miyuki Kagamida, Edilene Delphino Rodrigues, Fernanda Rodrigues Garcez e Walmir Silva Garcez\*

Centro de Ciências Exatas e Tecnologia, Química, Universidade Federal de Mato Grosso do Sul, 79070-900 Campo Grande – MS, Brasil.

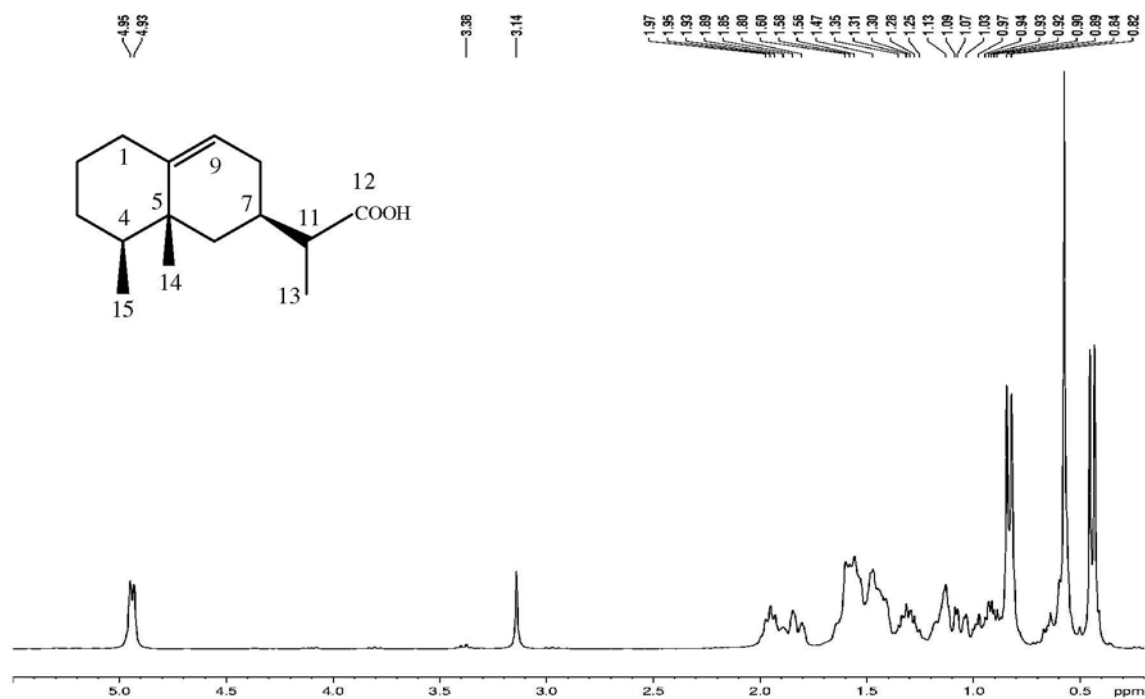


Figura 1S. Espectro de RMN <sup>1</sup>H (300 MHz, CDCl<sub>3</sub>) do composto 1

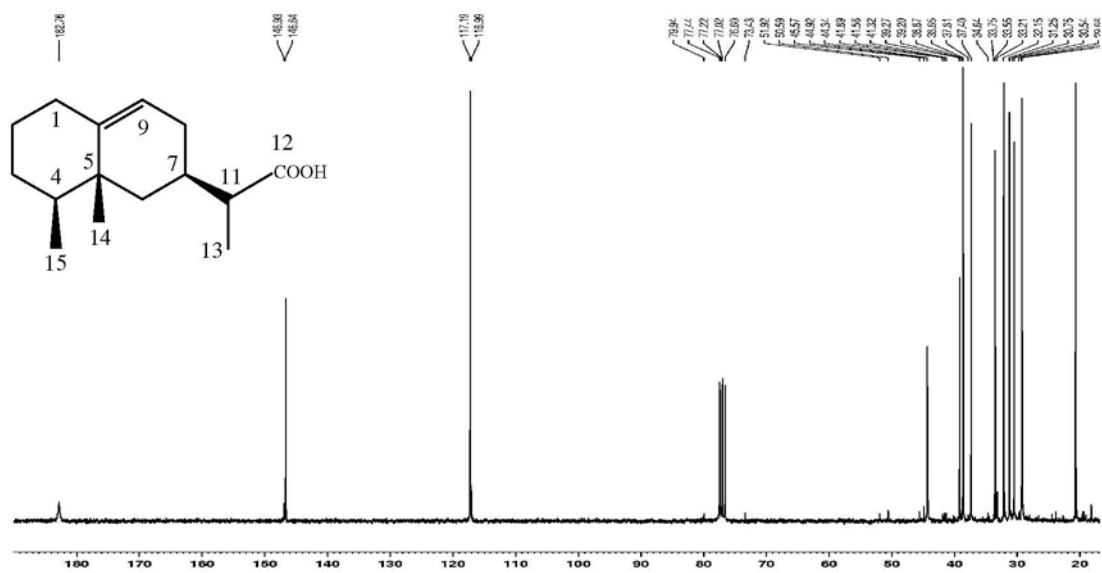


Figura 2S. Espectro de RMN  $^{13}\text{C}$  (75 MHz,  $\text{CDCl}_3$ ) do composto 1

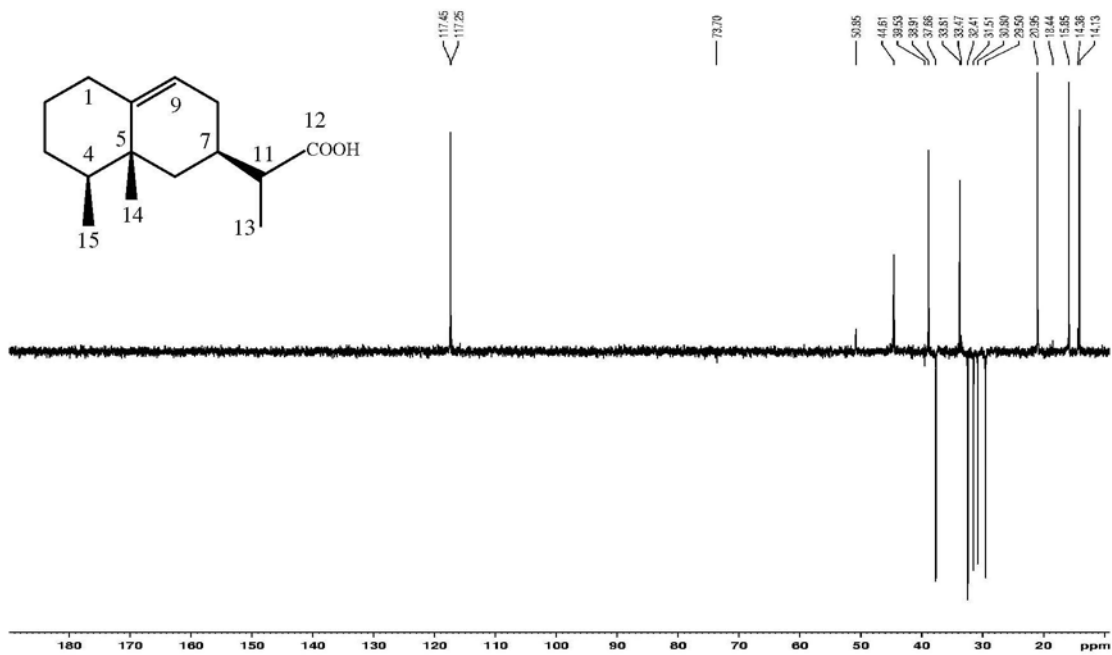


Figura 3S. Experimento DEPT 135° (75 MHz,  $\text{CDCl}_3$ ) do composto 1

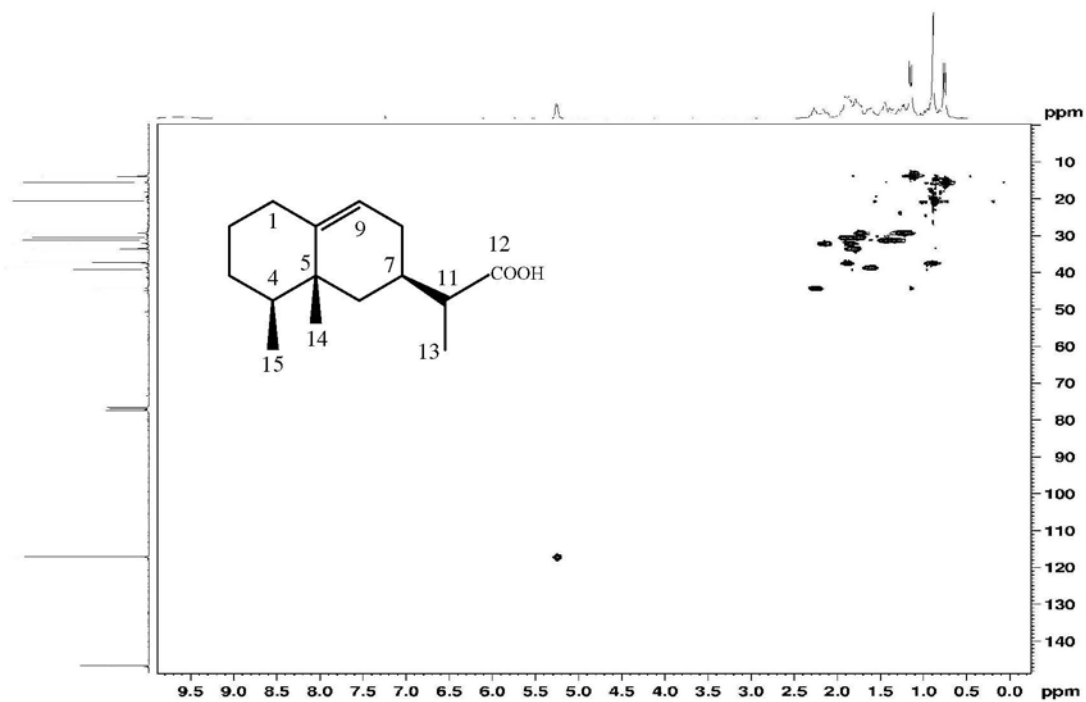


Figura 4S. Experimento HSQC (300/75 MHz, CDCl<sub>3</sub>) do composto 1



Figura 5S. Experimento HMBC (300/75 MHz, CDCl<sub>3</sub>) do composto 1

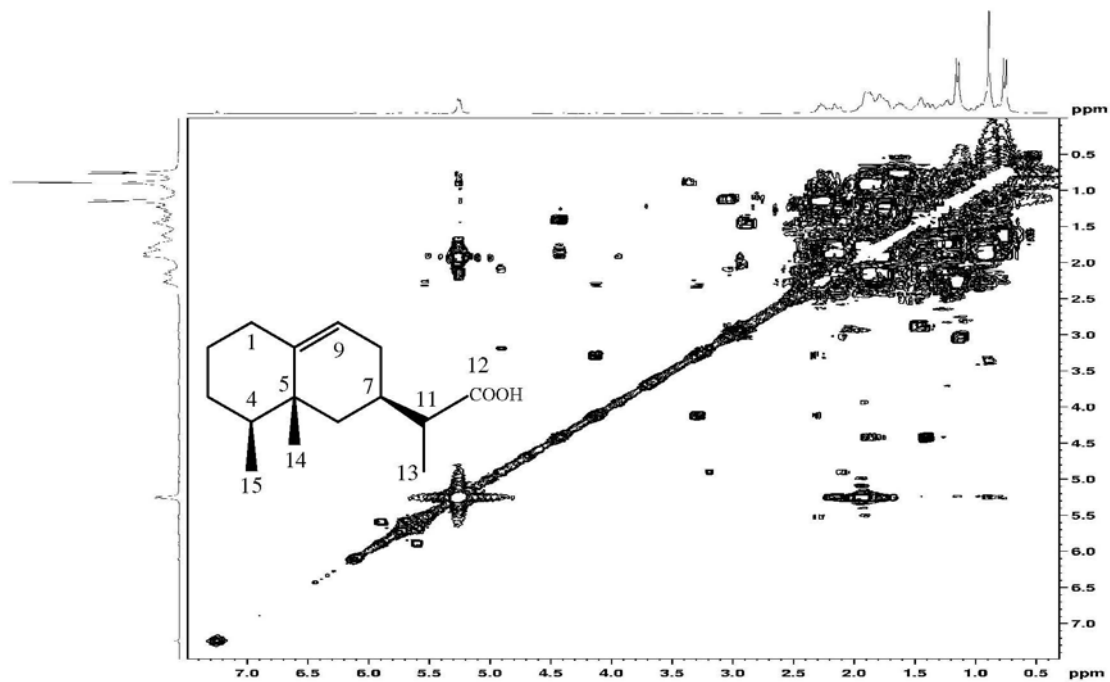


Figura 6S. Experimento COSY  $^1\text{H}$ - $^1\text{H}$  (300 MHz,  $\text{CDCl}_3$ ) do composto 1

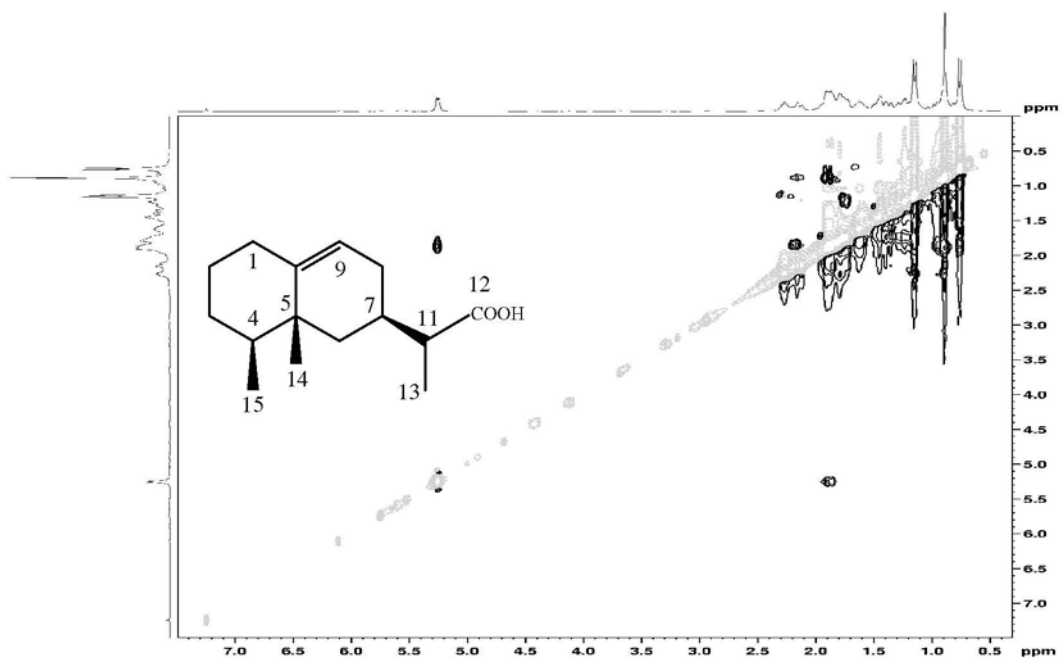


Figura 7S. Experimento NOESY (300 MHz,  $\text{CDCl}_3$ ) do composto 1

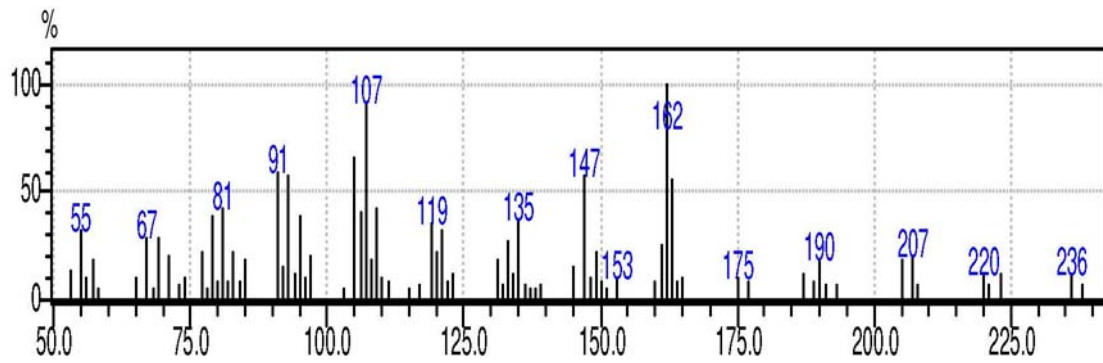


Figura 8S. Espectro de massas (CG/EM) do composto 1

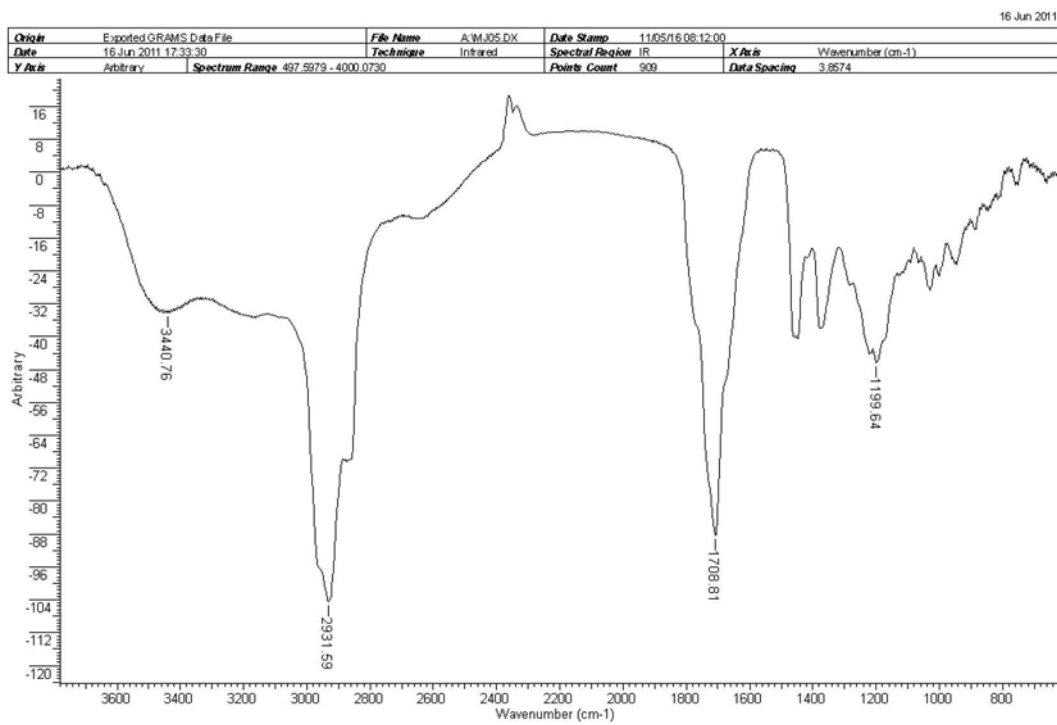


Figura 9S. Espectro de infravermelho (FT) do composto 1

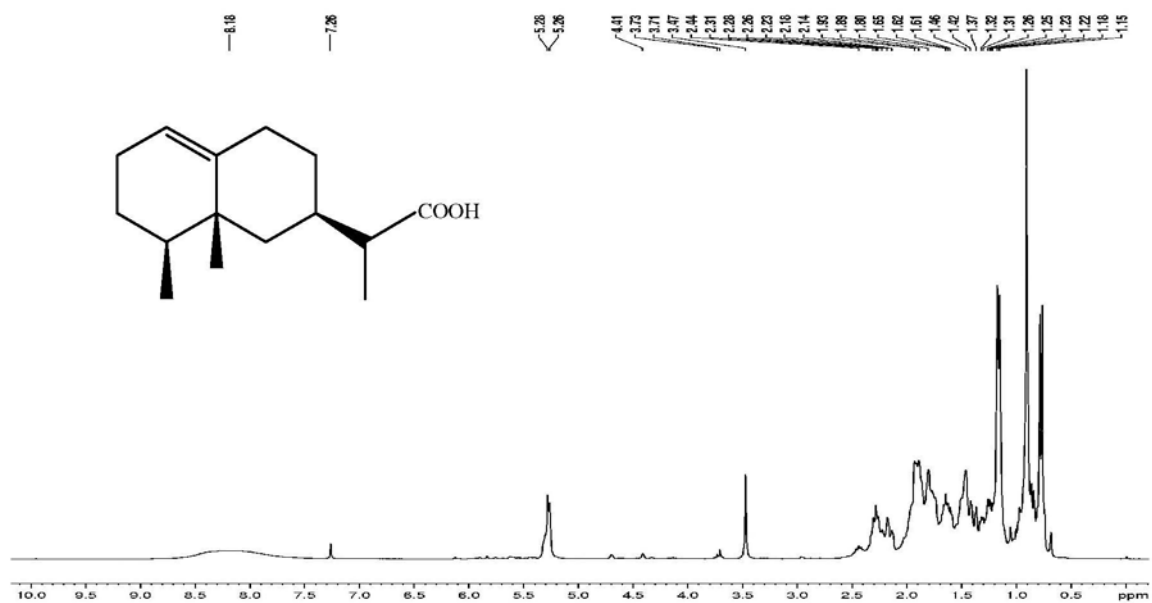


Figura 10S. Espectro de RMN <sup>1</sup>H (300 MHz, CDCl<sub>3</sub>) do composto 2

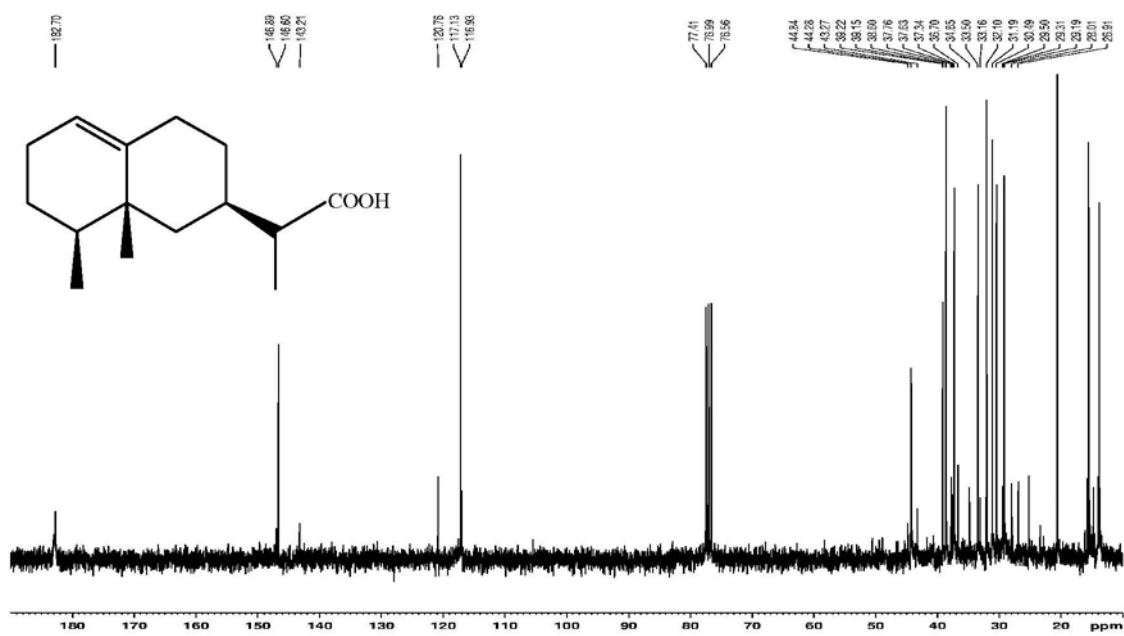


Figura 11S. Espectro de RMN <sup>13</sup>C (75 MHz, CDCl<sub>3</sub>) do composto 2

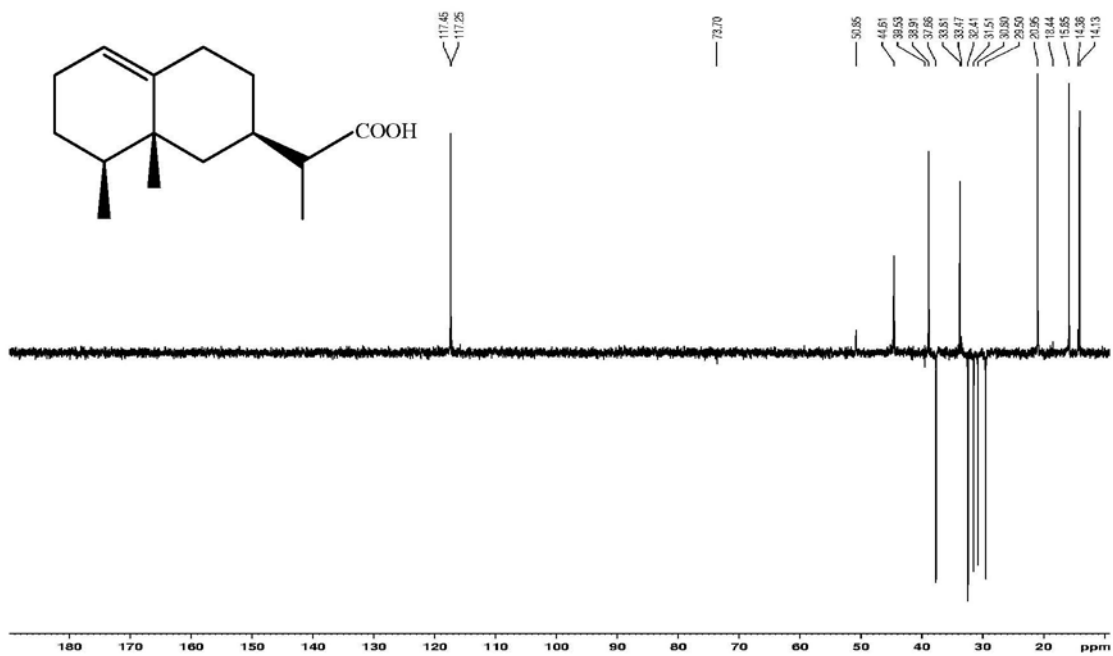


Figura 12S. Experimento DEPT 135° (75 MHz, CDCl<sub>3</sub>) do composto 2

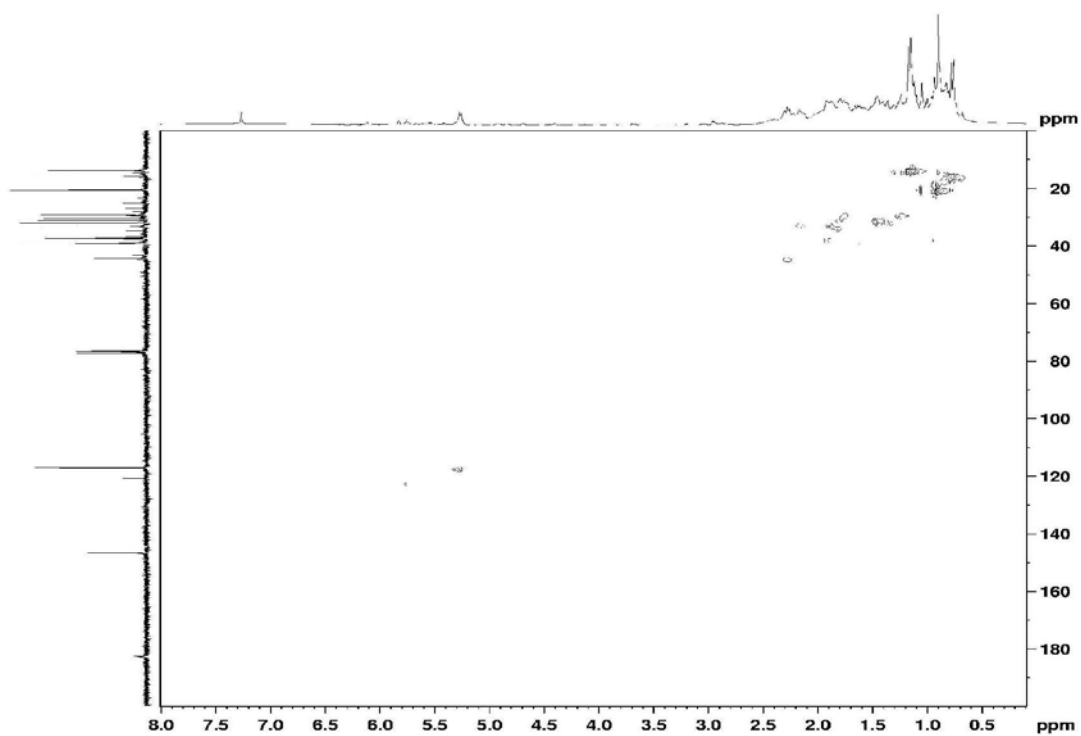


Figura 13S. Experimento HSQC (300/75 MHz, CDCl<sub>3</sub>) do composto 2

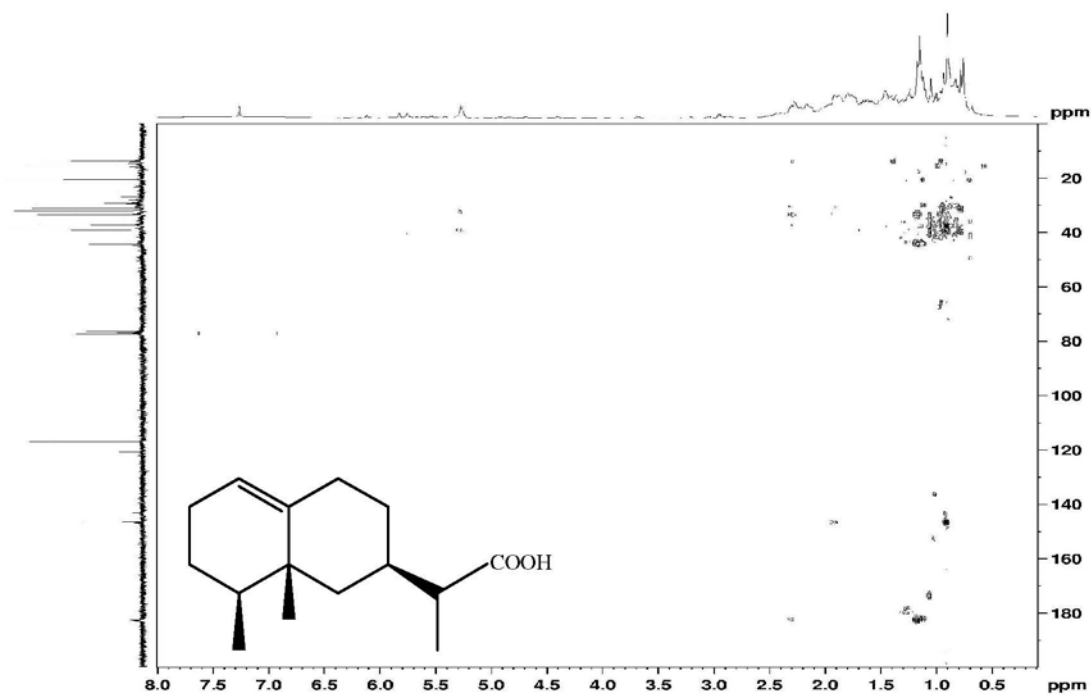


Figura 14S. Experimento HMBC (300/75 MHz,  $\text{CDCl}_3$ ) do composto 2

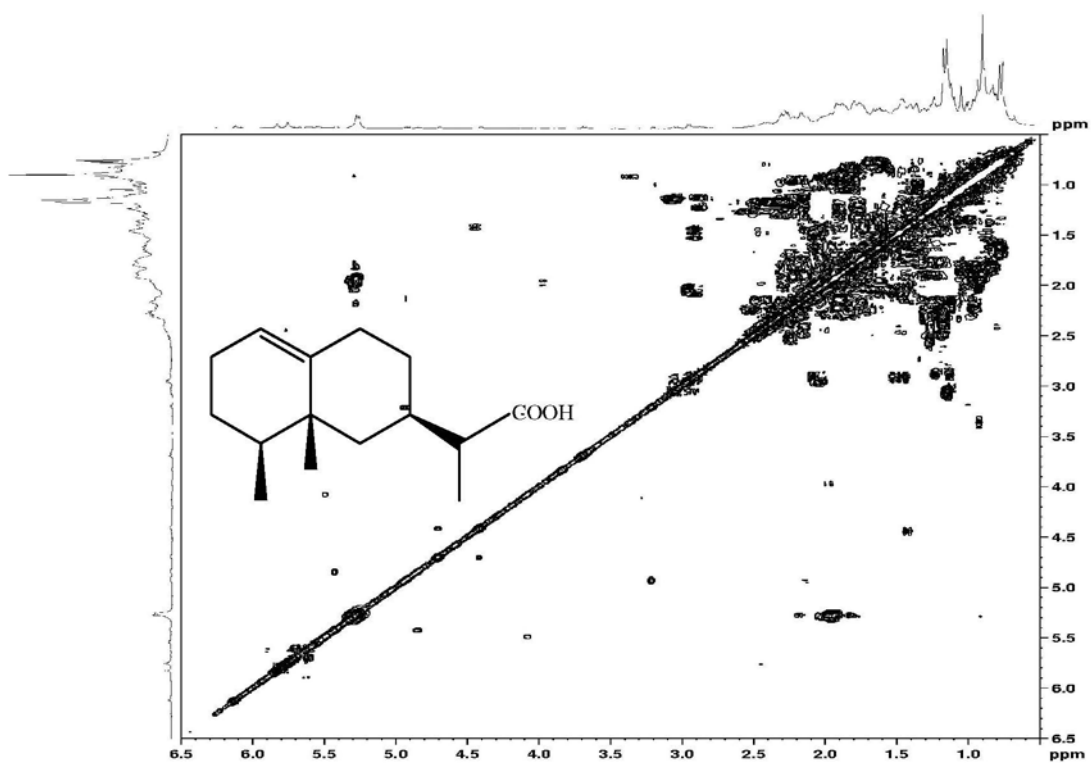


Figura 15S. Experimento COSY  $^1\text{H}$ - $^1\text{H}$  (300 MHz,  $\text{CDCl}_3$ ) do composto 2



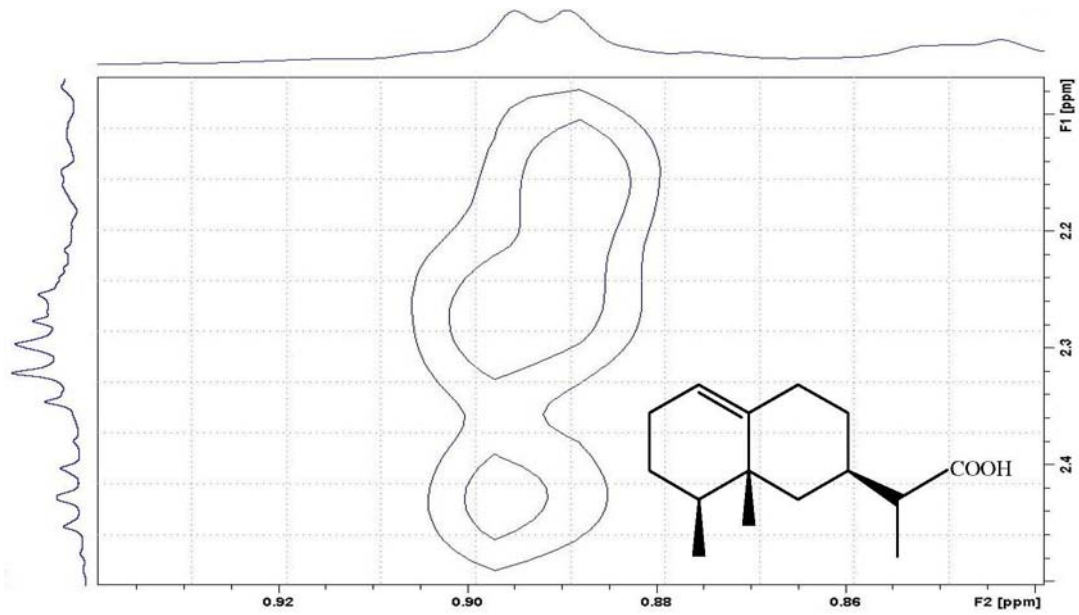


Figura 16S. Experimento NOESY (300 MHz,  $CDCl_3$ ) do composto 2

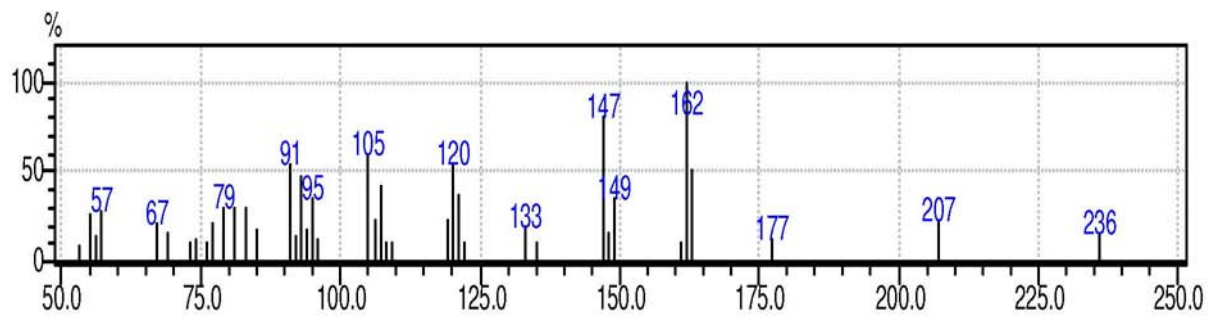


Figura 17S. Espectro de massas (CG/EM) do composto 2

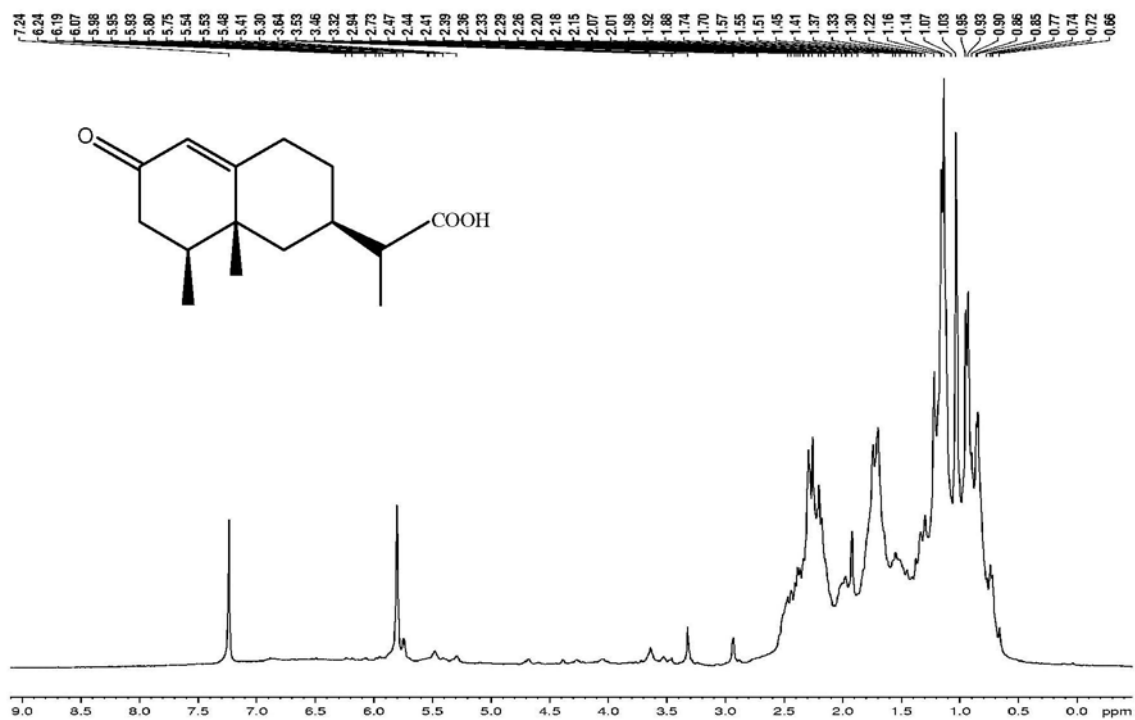


Figura 18S. Espectro de RMN  $^1\text{H}$  (300 MHz,  $\text{CDCl}_3$ ) do composto 3

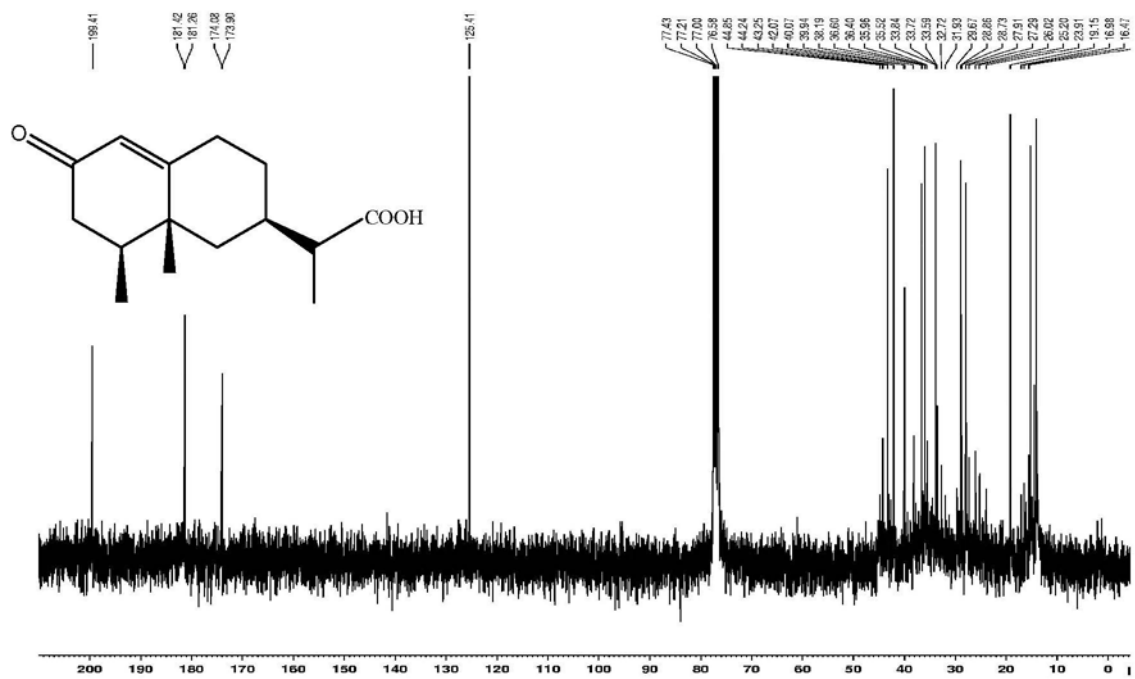


Figura 19S. Espectro de RMN  $^{13}\text{C}$  (75 MHz,  $\text{CDCl}_3$ ) do composto 3

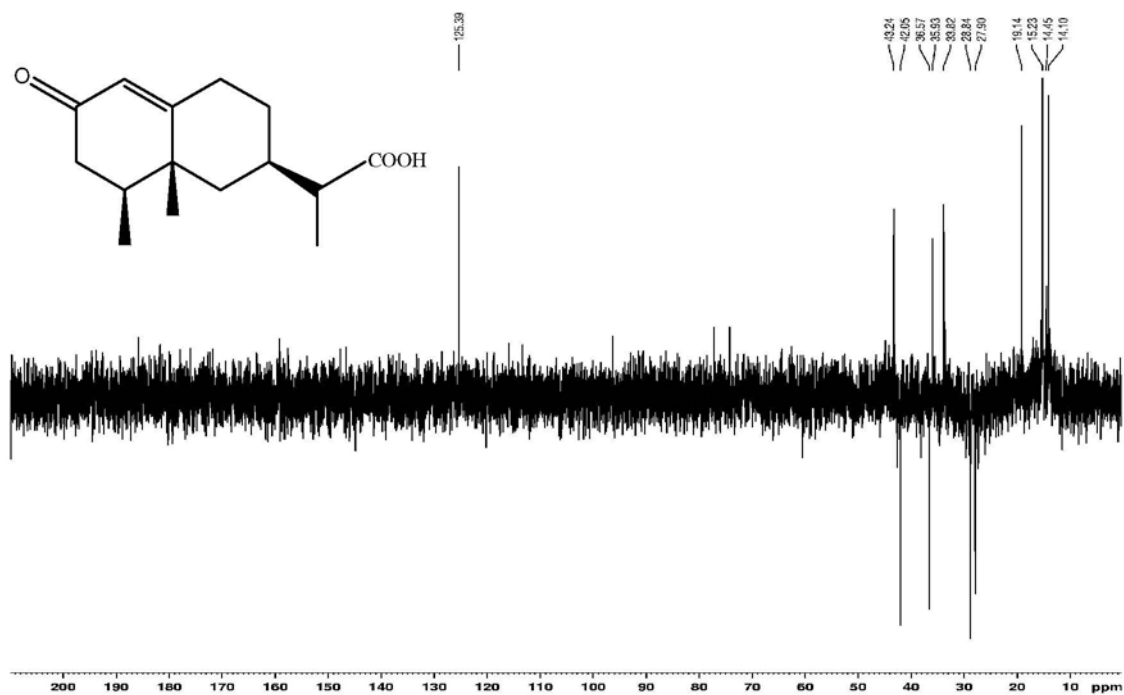


Figura 20S. Experimento DEPT 135° (75 MHz, CDCl<sub>3</sub>) do composto 3

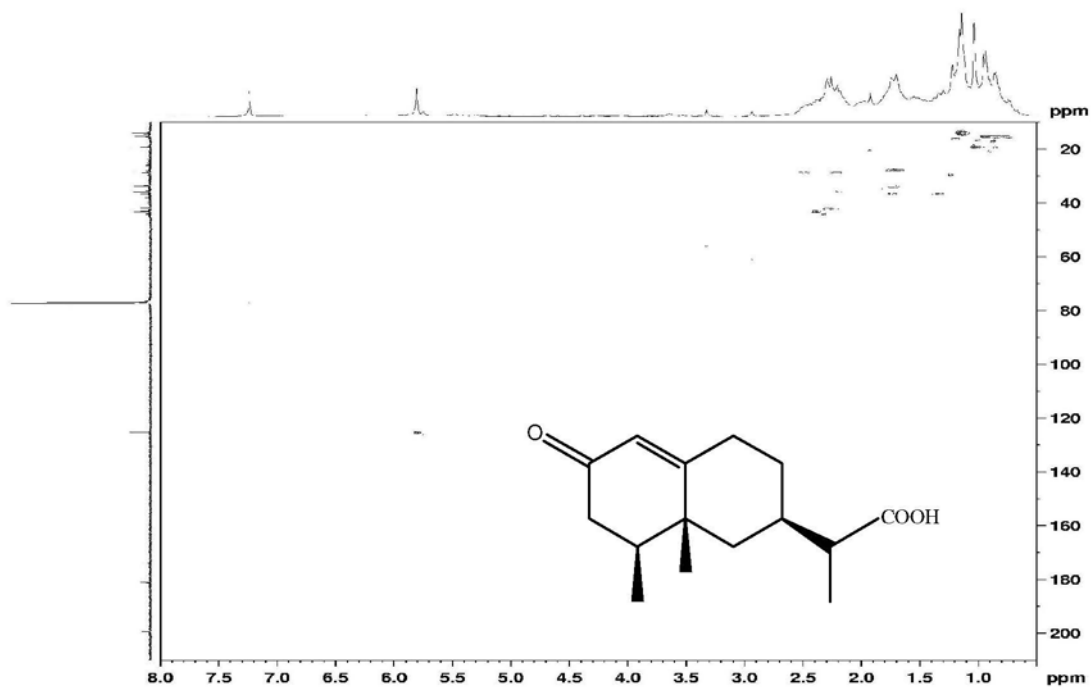


Figura 21S. Experimento HSQC (300/75 MHz, CDCl<sub>3</sub>) do composto 3

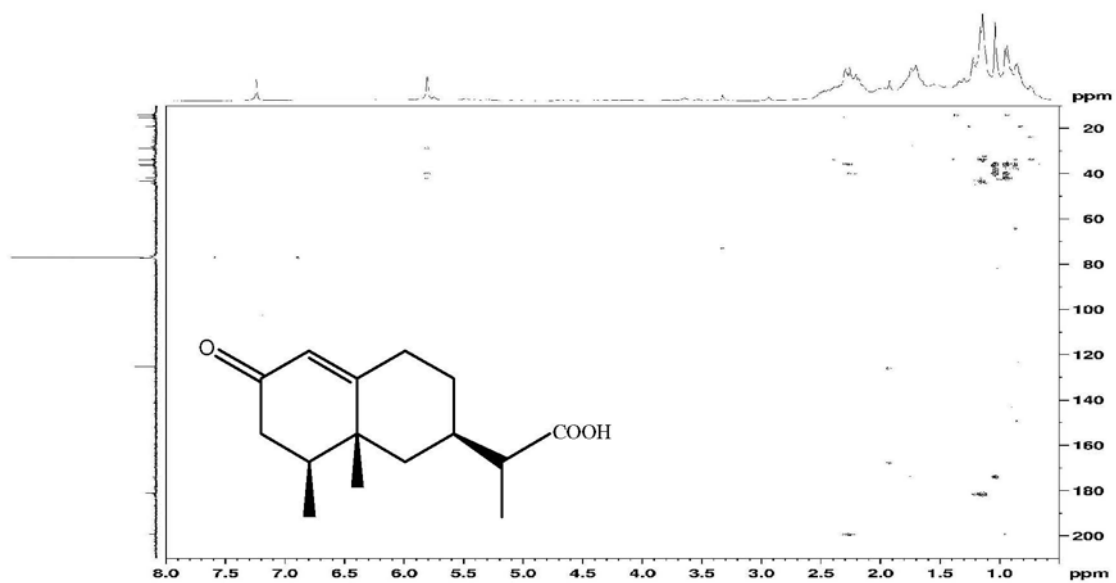


Figura 22S. Experimento HMBC (300/75 MHz,  $\text{CDCl}_3$ ) do composto 3

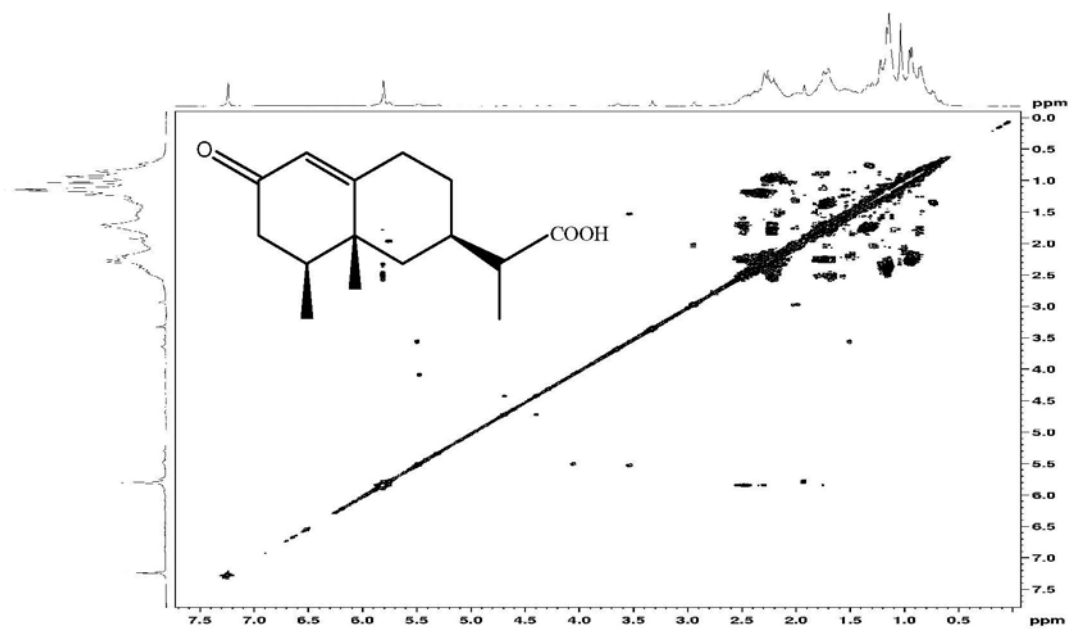


Figura 23S. Experimento COSY  $^1\text{H}$ - $^1\text{H}$  (300 MHz,  $\text{CDCl}_3$ ) do composto 3

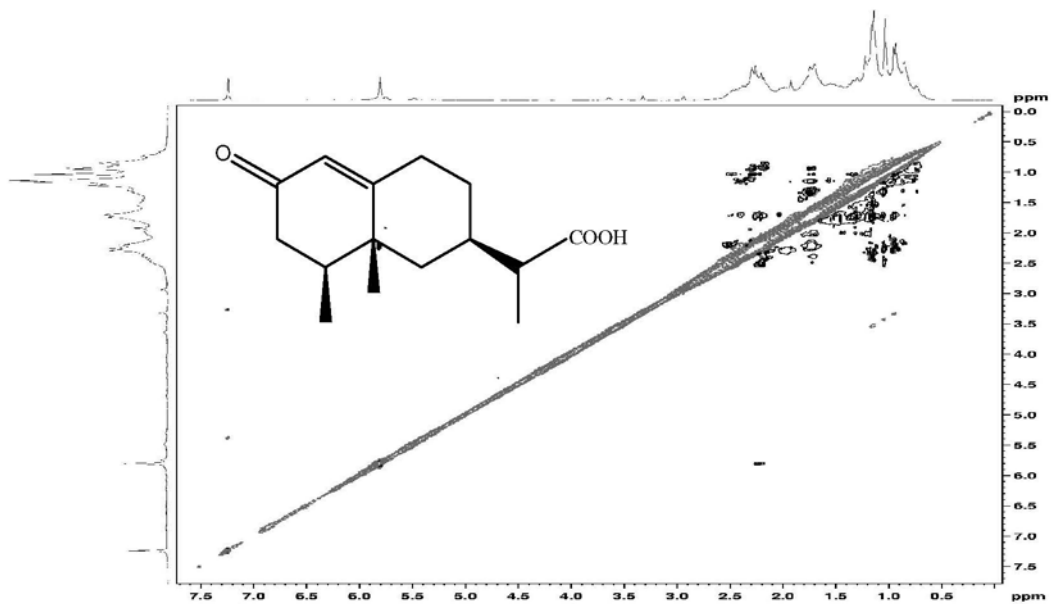


Figura 24S. Experimento NOESY (300 MHz, CDCl<sub>3</sub>) do composto 3

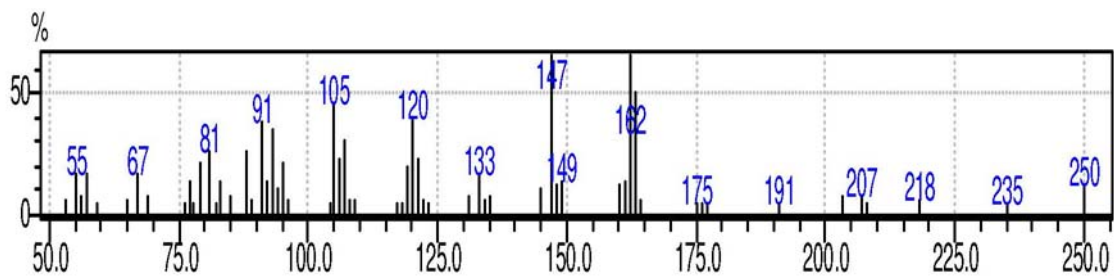


Figura 25S. Espectro de massas do composto 3

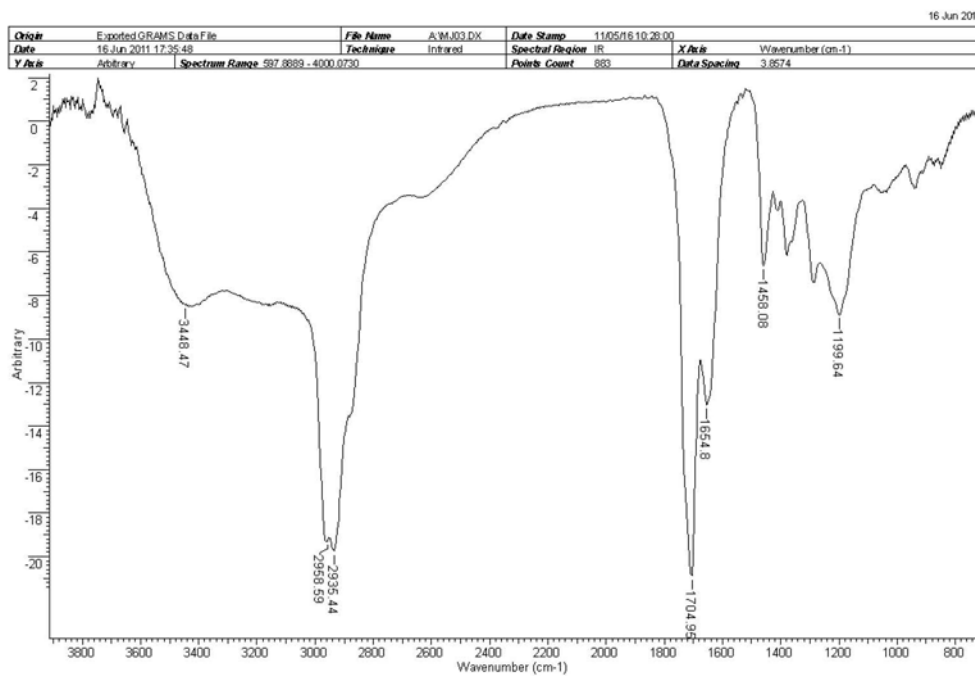


Figura 26S. Espectro de infravermelho (FT) do composto 3

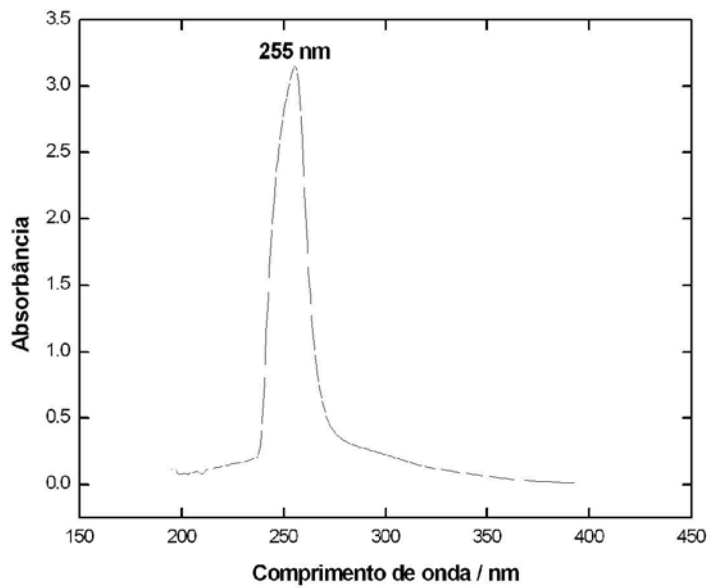


Figura 27S. Espectro de UV do composto 3

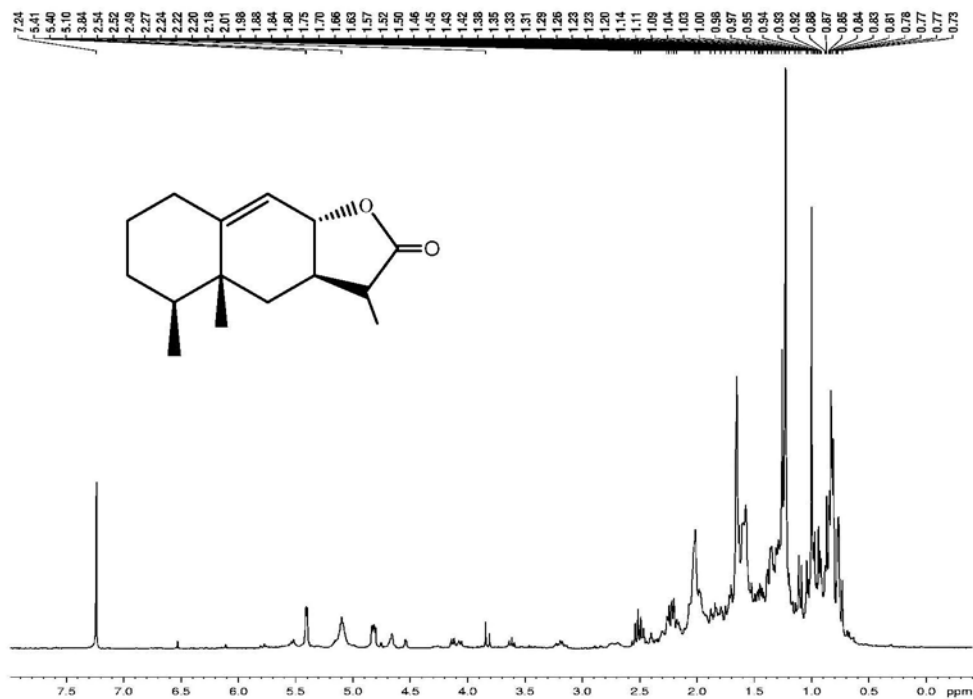


Figura 28S. Espectro de RMN  $^1\text{H}$  (300 MHz,  $\text{CDCl}_3$ ) do composto 4

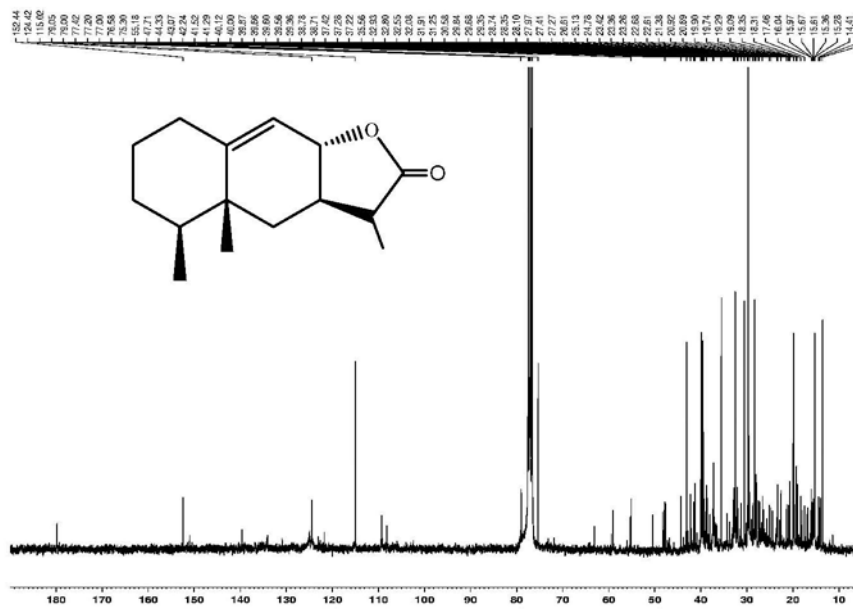


Figura 29S. Espectro de RMN  $^{13}\text{C}$  (75 MHz,  $\text{CDCl}_3$ ) do composto 4

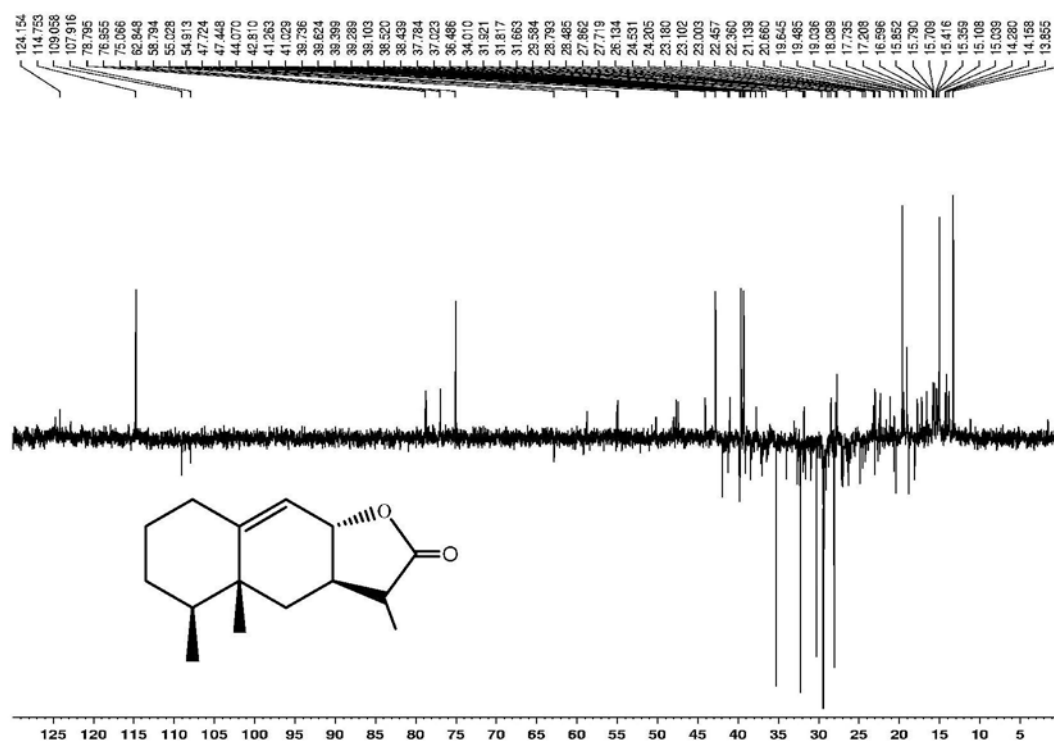


Figura 30S. Experimento DEPT 135° (75 MHz, CDCl<sub>3</sub>) do composto 4

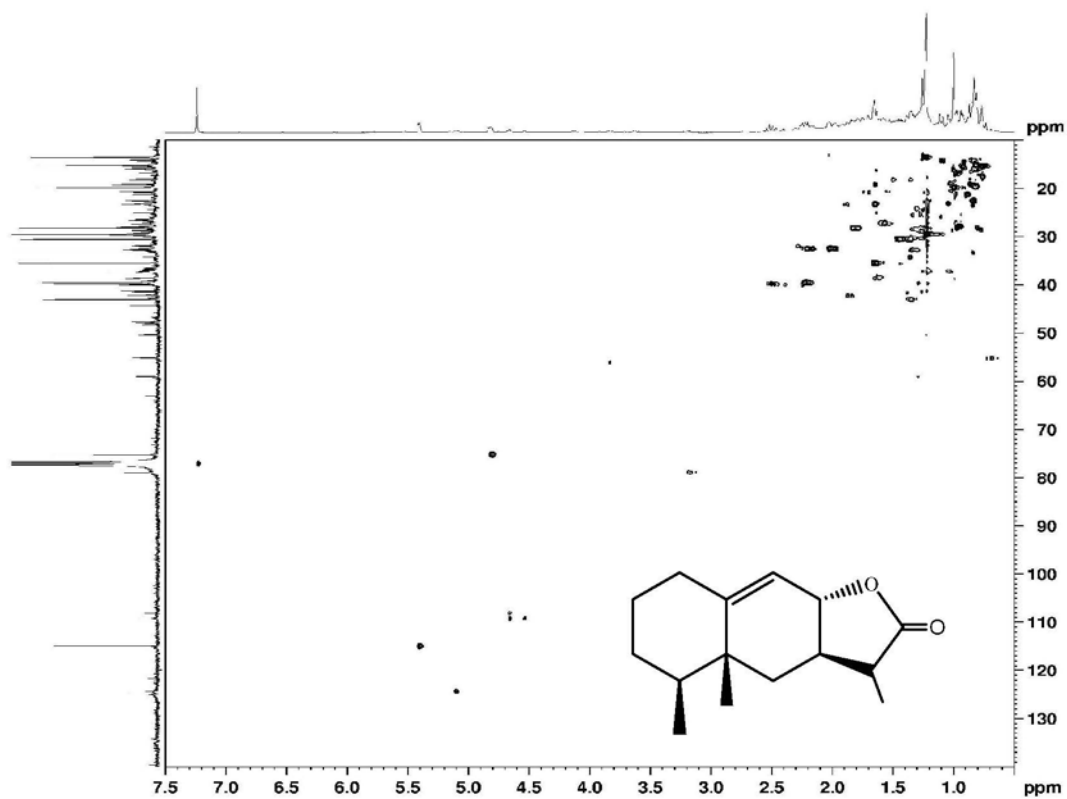


Figura 31S. Experimento HSQC (300/75 MHz, CDCl<sub>3</sub>) do composto 4



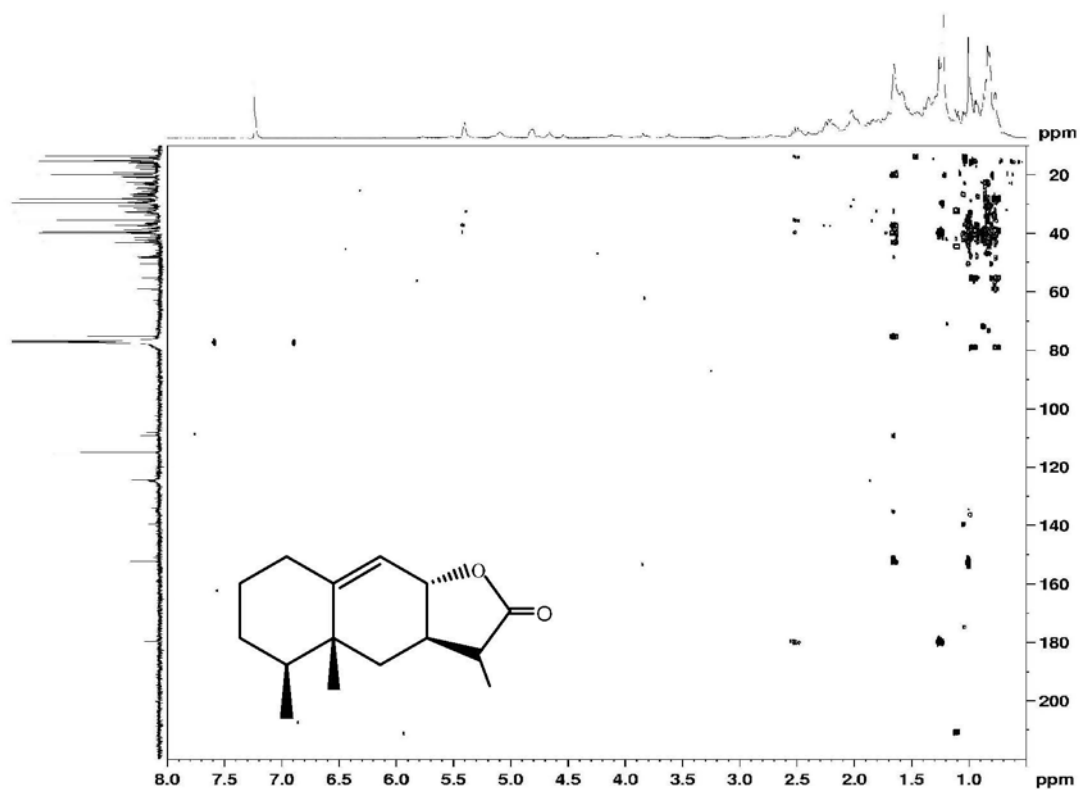


Figura 32S. Experimento HMBC (300/75 MHz,  $\text{CDCl}_3$ ) do composto 4

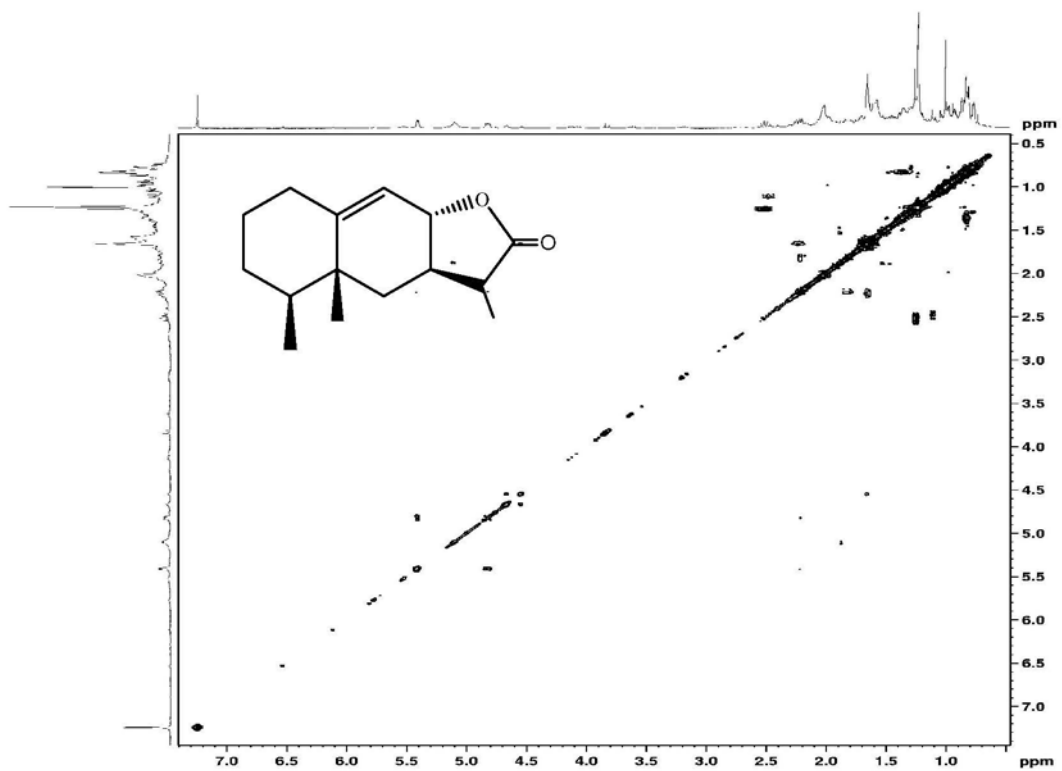


Figura 33S. Experimento COSY  $^1\text{H}$ - $^1\text{H}$  (300 MHz,  $\text{CDCl}_3$ ) do composto 4

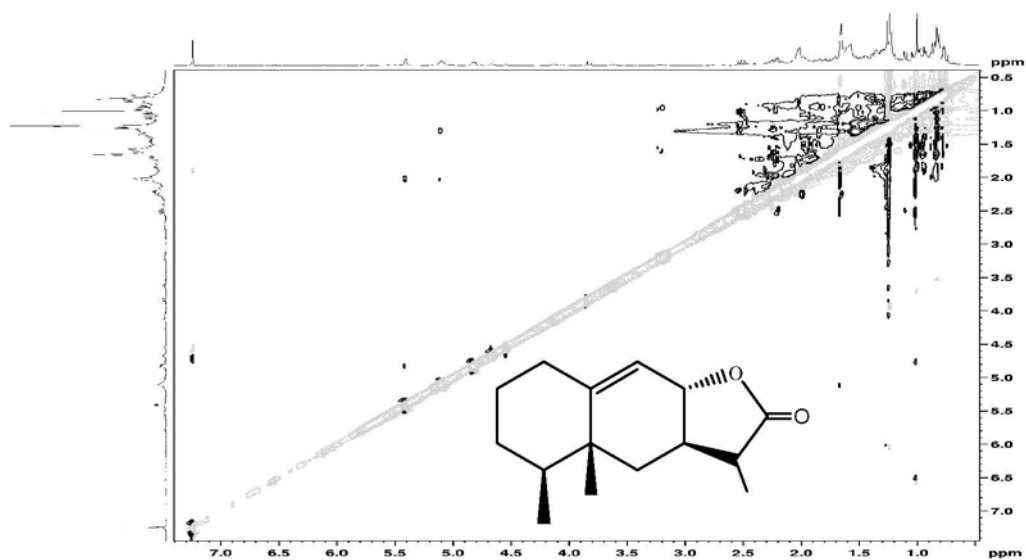


Figura 34S. Experimento NOESY (300 MHz, CDCl<sub>3</sub>) do composto 4

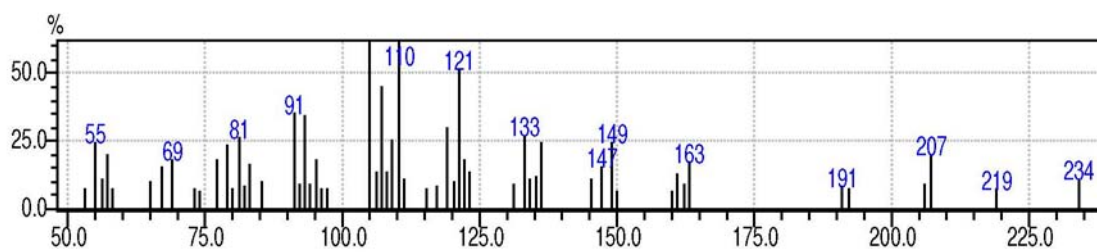


Figura 35S. Espectro de massas do composto 4

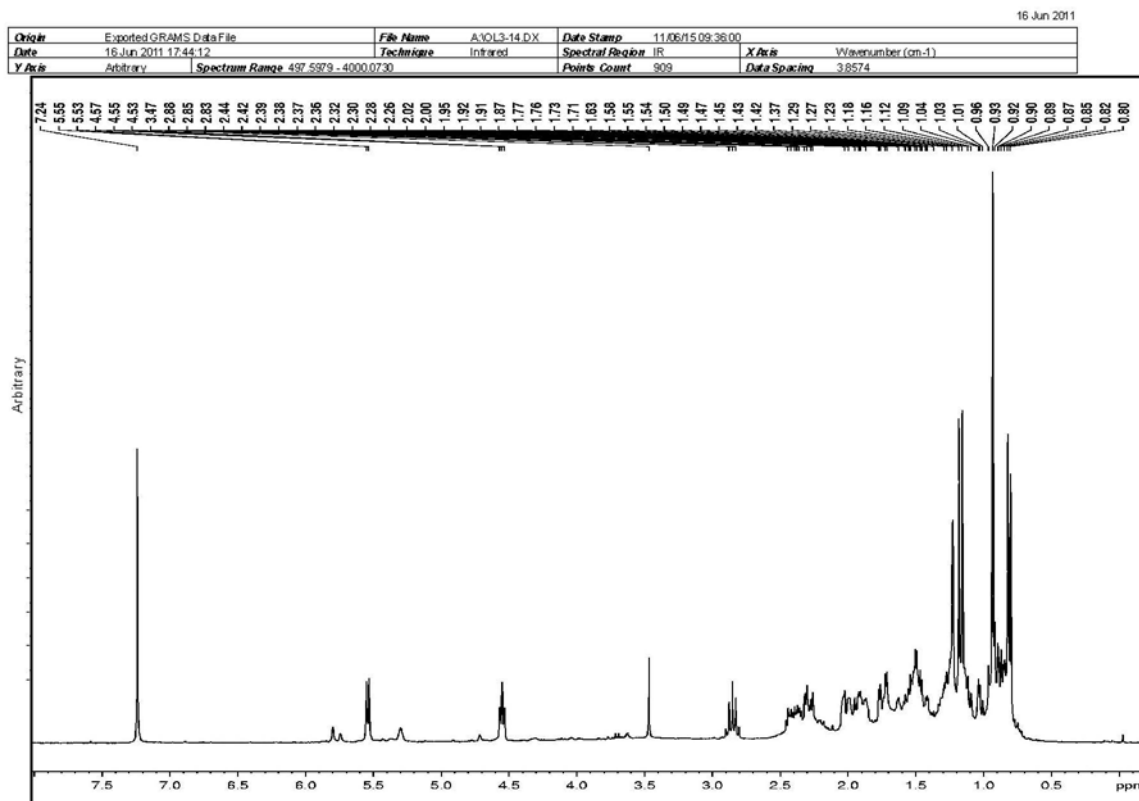


Figura 36S. Espectro de infravermelho do composto 4

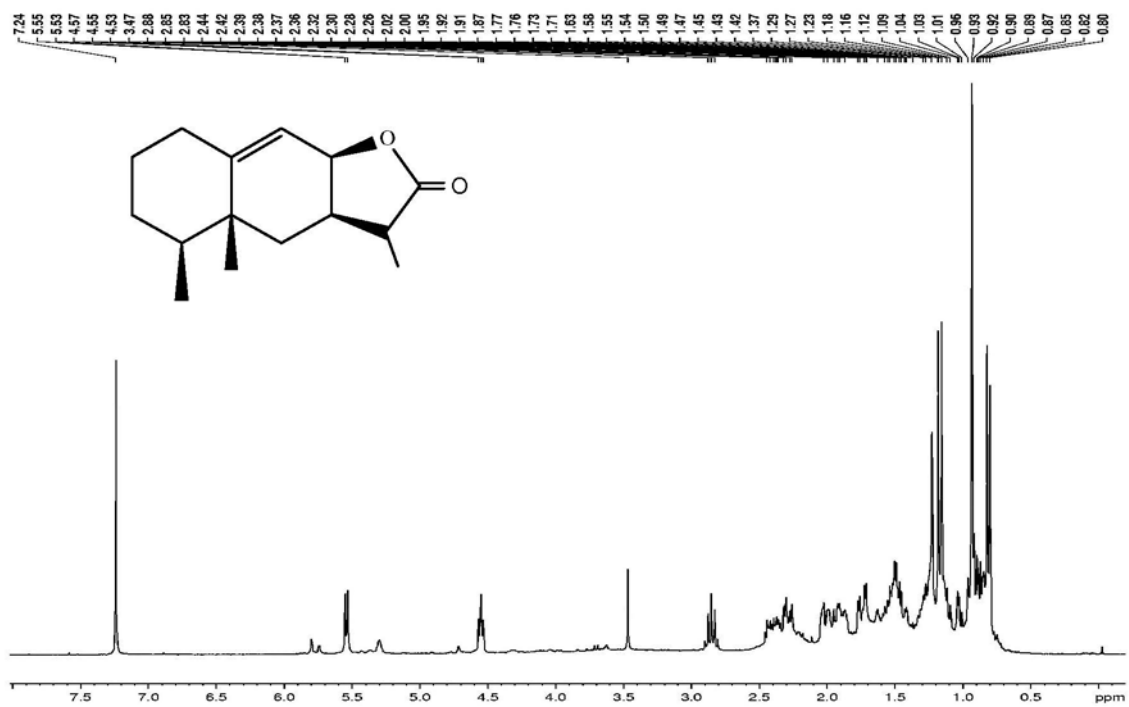


Figura 37S. Espectro de RMN  $^1\text{H}$  (300 MHz,  $\text{CDCl}_3$ ) do composto 5

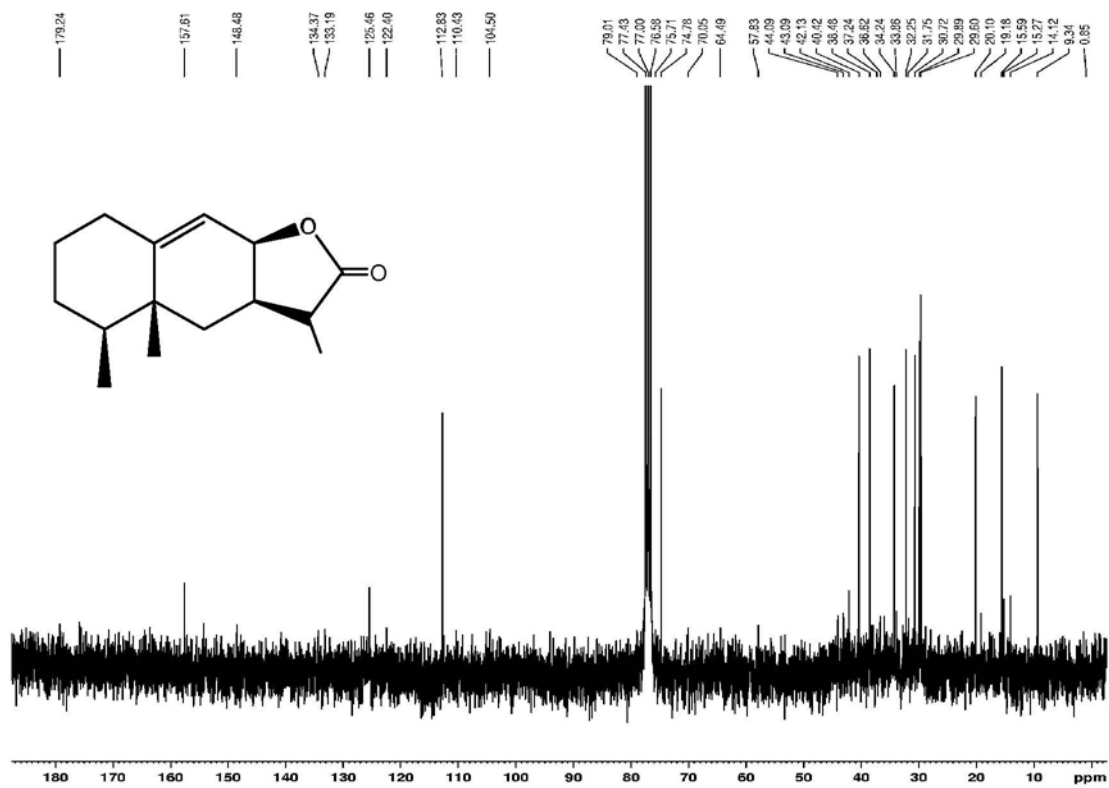


Figura 38S. Espectro de RMN  $^{13}\text{C}$  (75 MHz,  $\text{CDCl}_3$ ) do composto 5

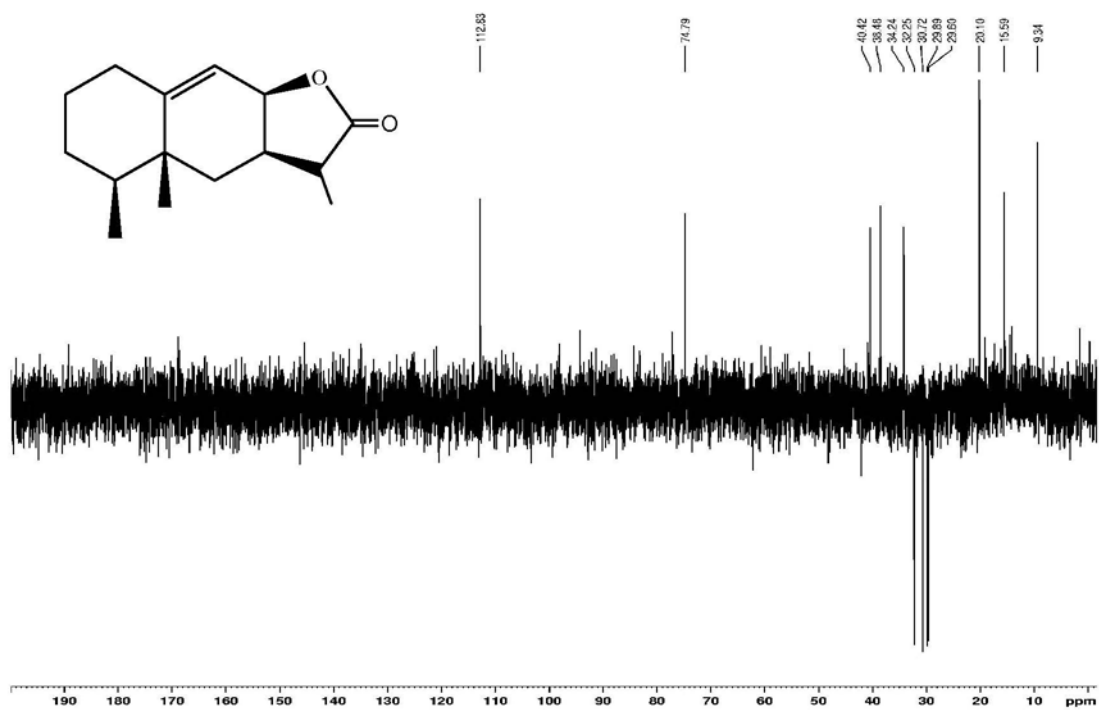


Figura 39S. Experimento DEPT  $135^\circ$  (75 MHz,  $\text{CDCl}_3$ ) do composto 5

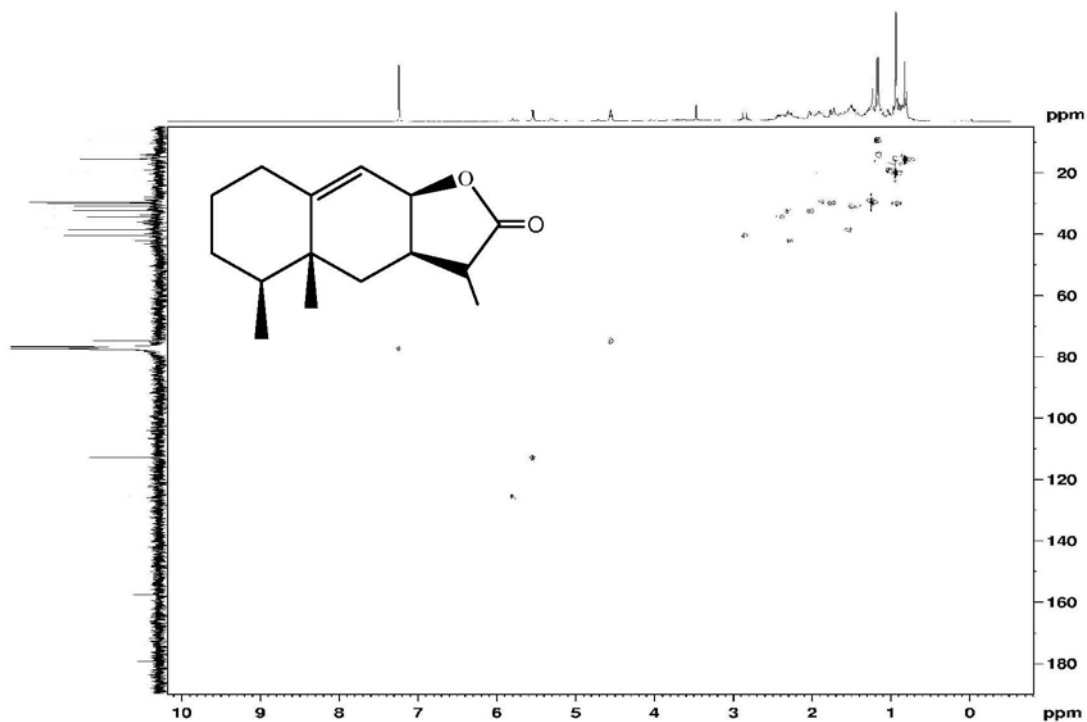


Figura 40S. Experimento HSQC (300/75 MHz, CDCl<sub>3</sub>) do composto 5

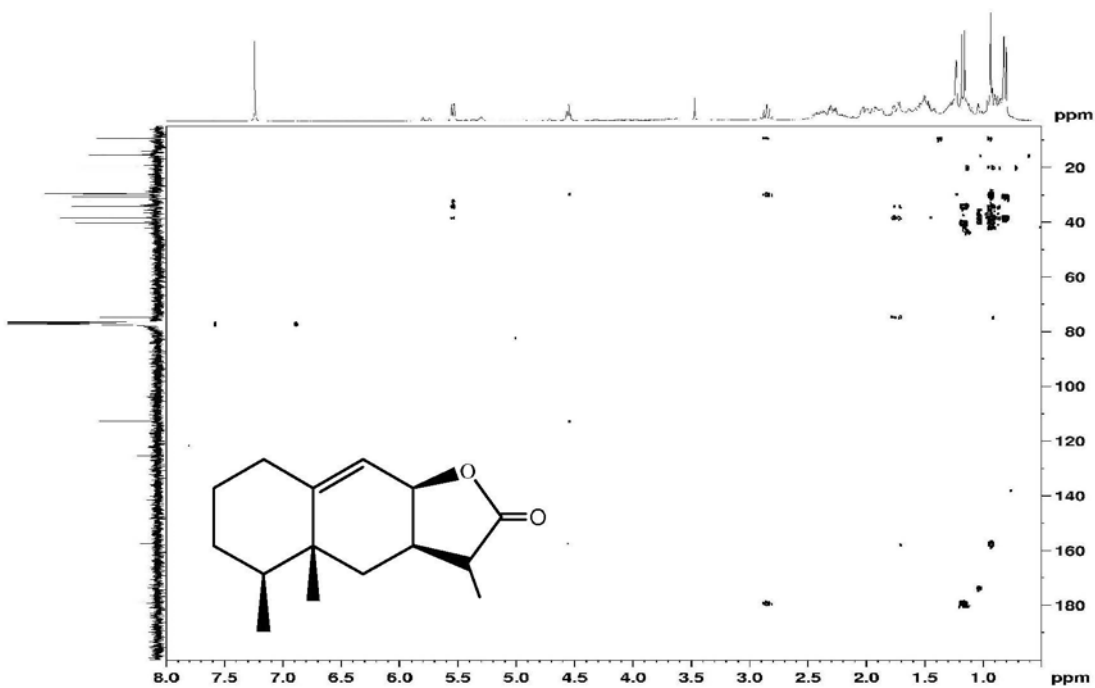
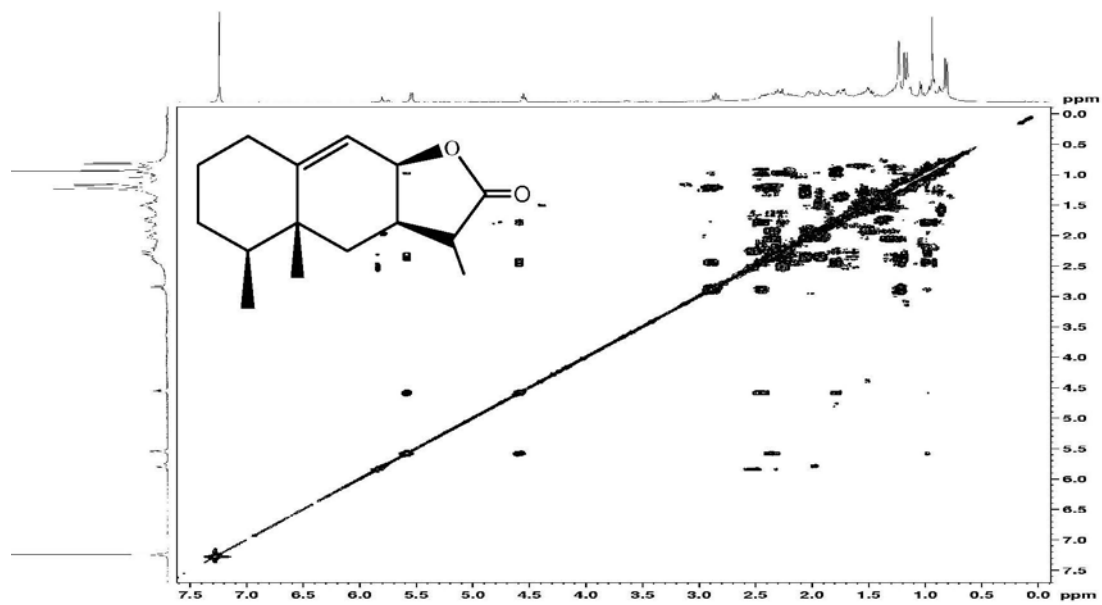
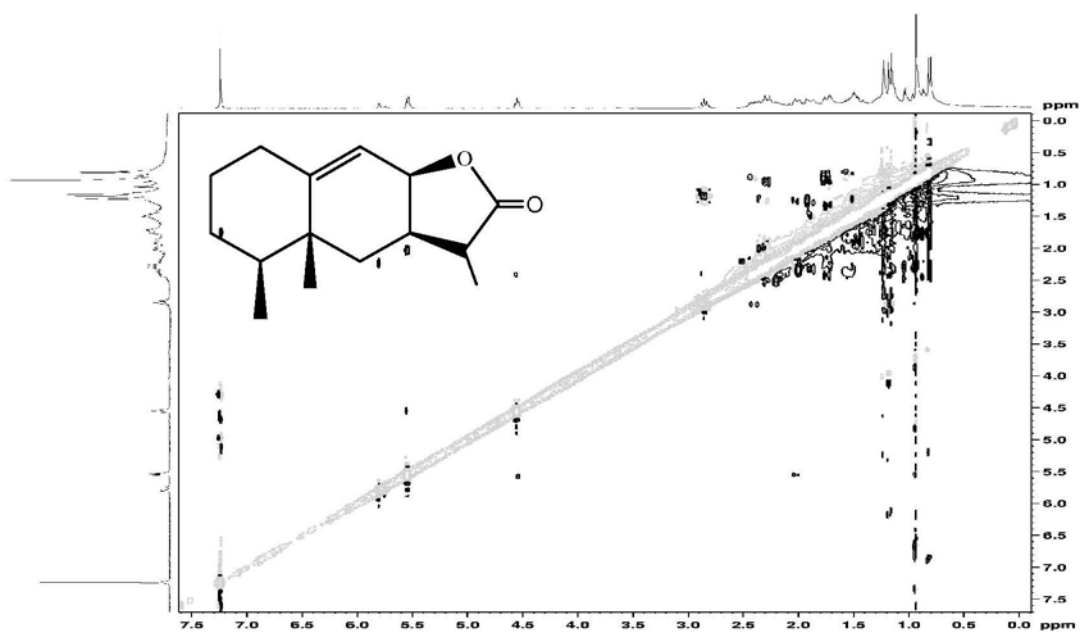


Figura 41S. Experimento HMBC (300/75 MHz, CDCl<sub>3</sub>) do composto 5



**Figura 42S.** Experimento COSY  $^1\text{H}$ - $^1\text{H}$  (300 MHz,  $\text{CDCl}_3$ ) do composto 5



**Figura 43S.** Experimento NOESY (300 MHz,  $\text{CDCl}_3$ ) do composto 5

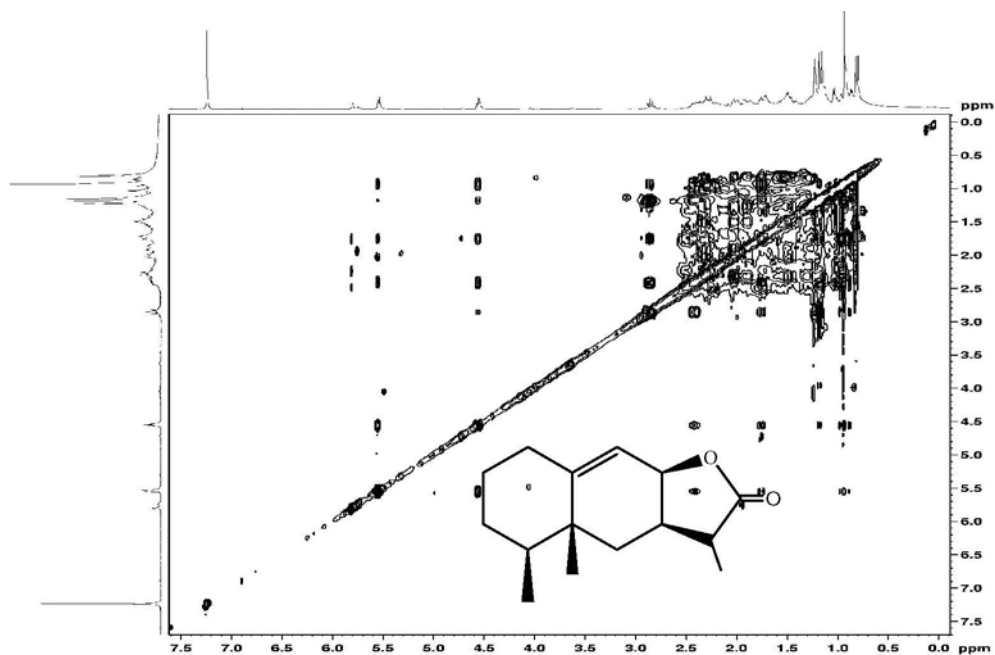


Figura 44S. Experimento TOCSY (300 MHz,  $CDCl_3$ ) do composto 5

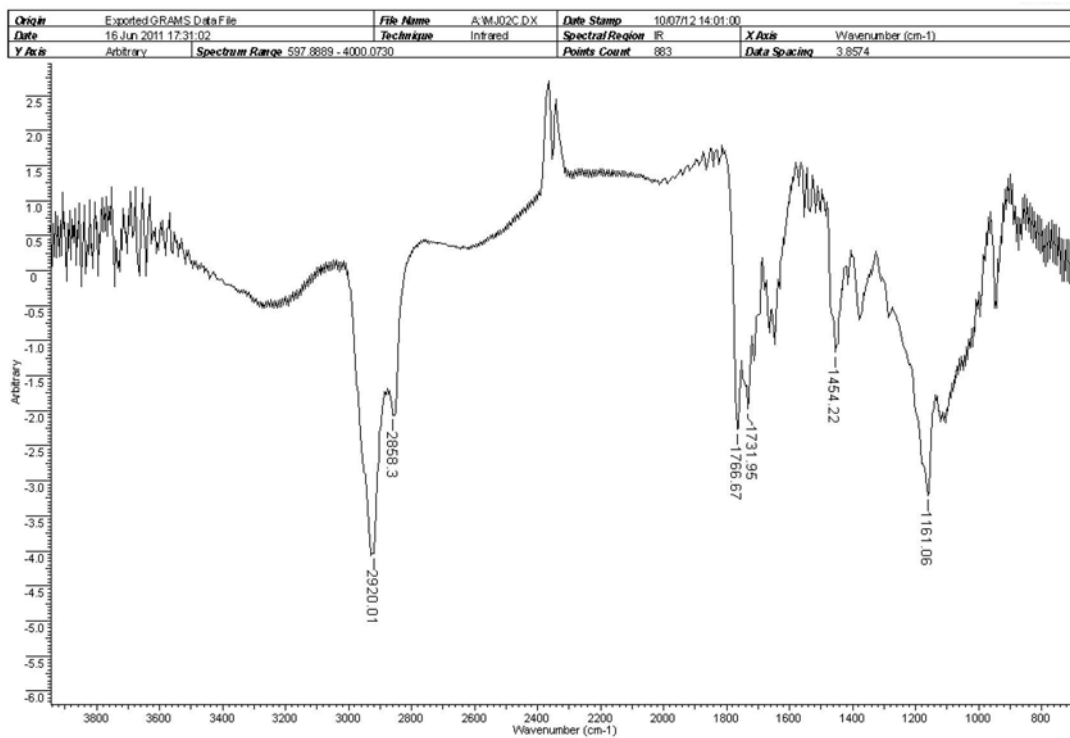


Figura 45S. Espectro de infravermelho do composto 5

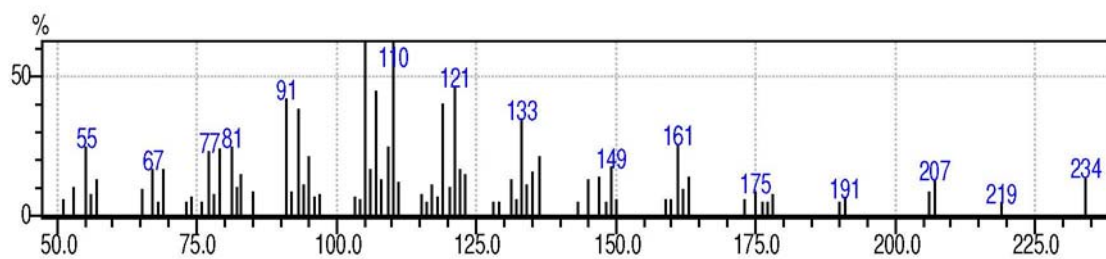


Figura 46S. Espectro de massas (CG/MS) do composto 5

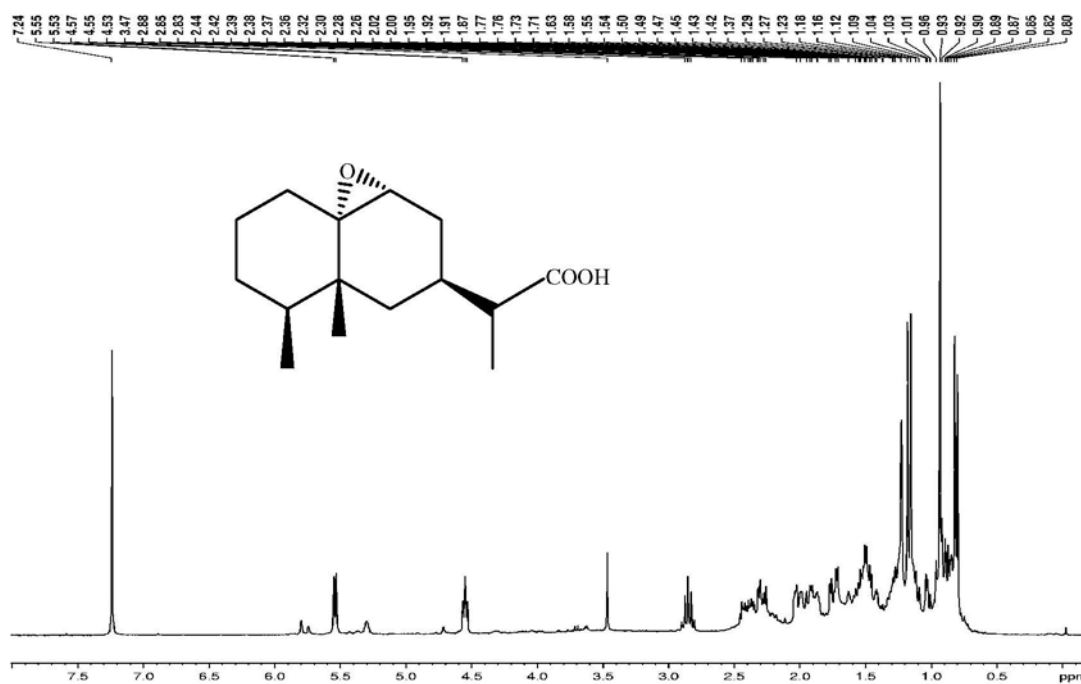


Figura 47S. Espectro de RMN <sup>1</sup>H (300 MHz, CDCl<sub>3</sub>) do composto 6

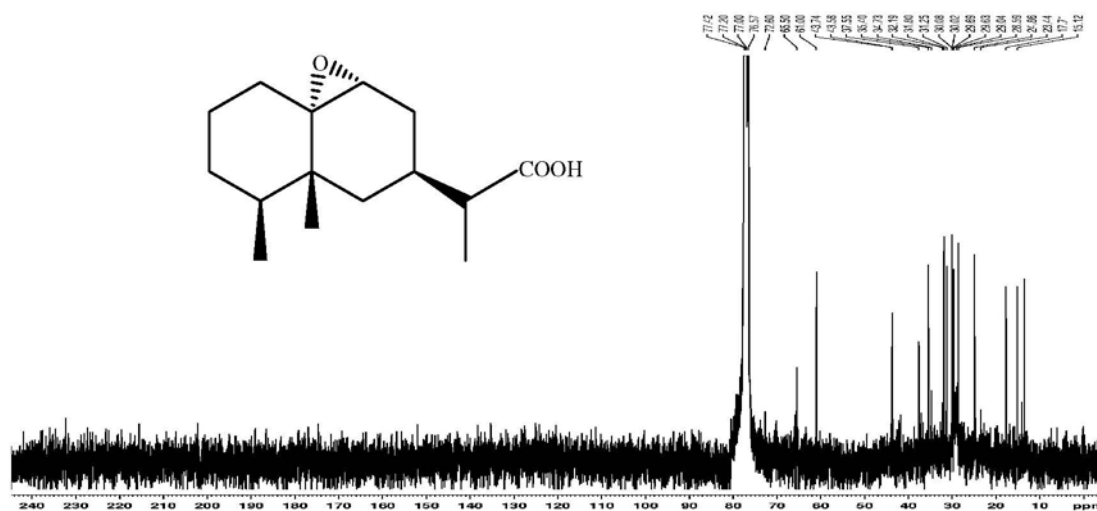


Figura 48S. Espectro de RMN <sup>13</sup>C (75 MHz, CDCl<sub>3</sub>) do composto 6



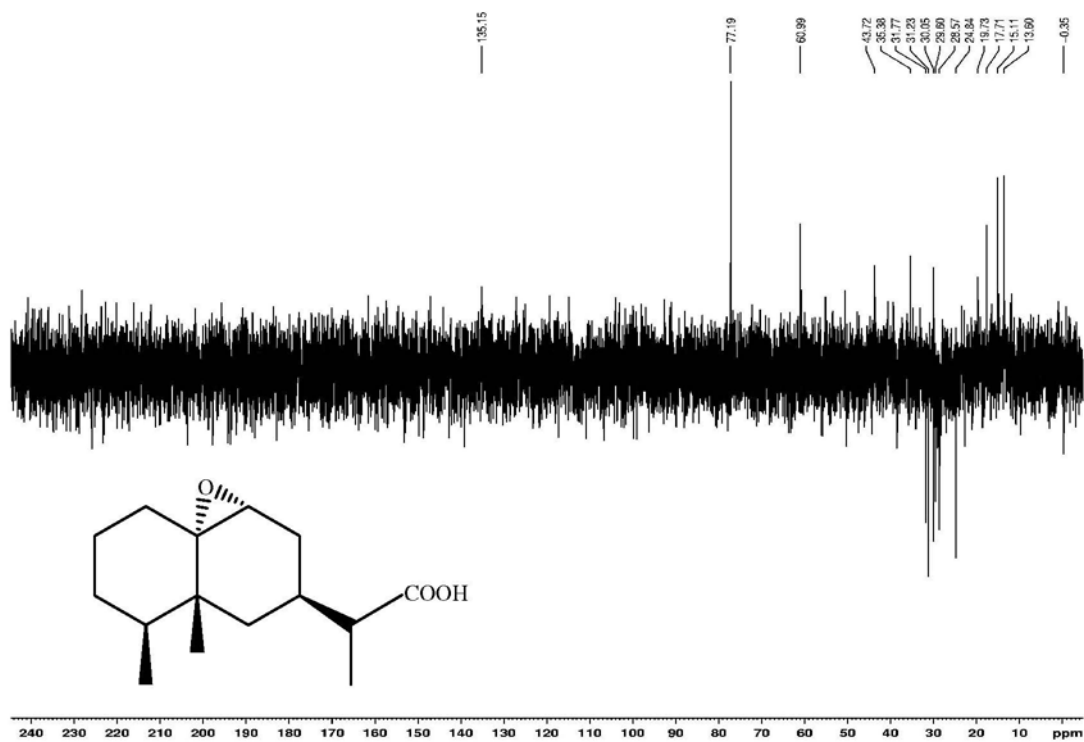


Figura 49S. Experimento DEPT 135° (75 MHz, CDCl<sub>3</sub>) do composto 6

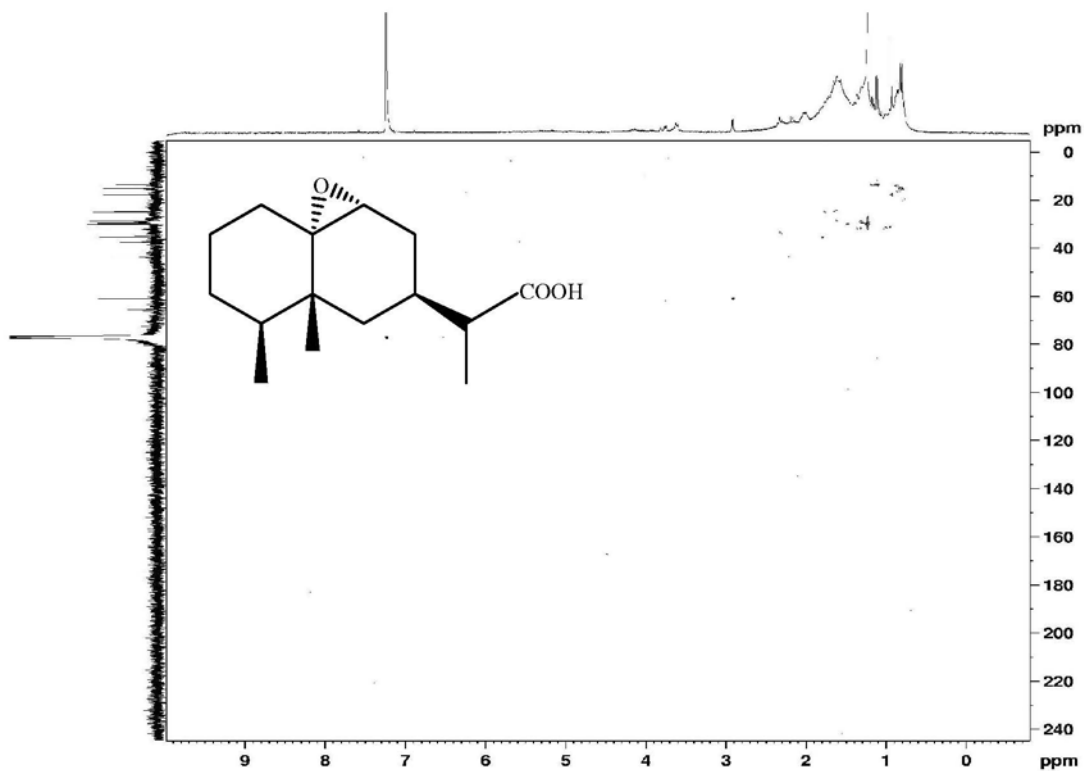


Figura 50S. Experimento HSQC (300/75 MHz, CDCl<sub>3</sub>) do composto 6

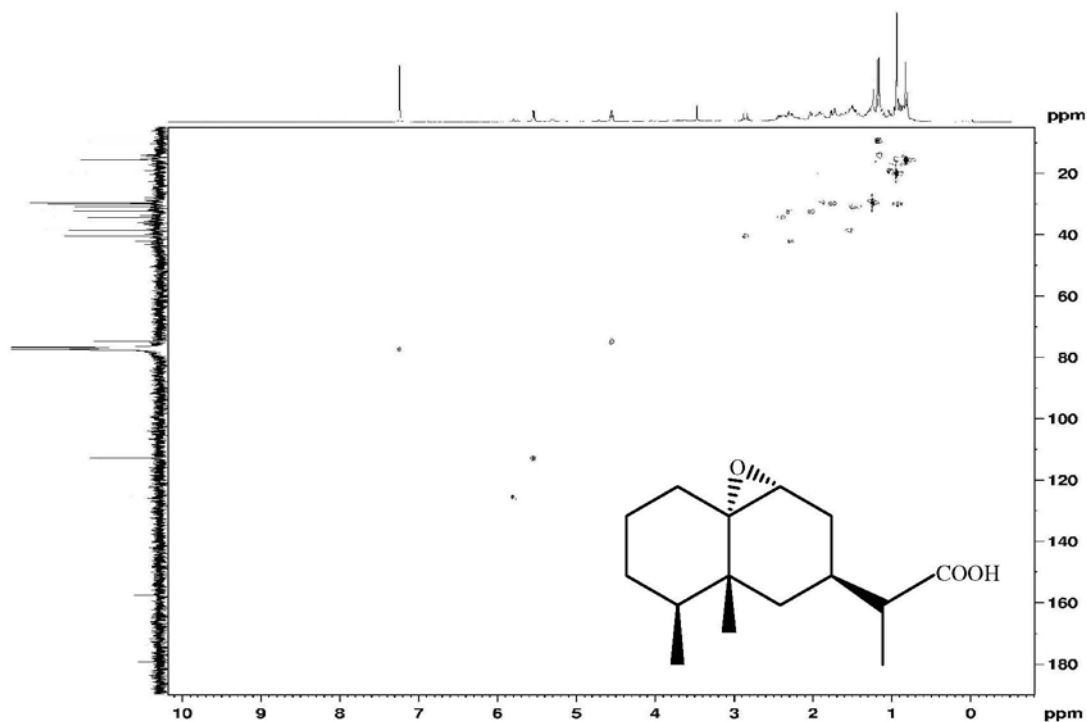


Figura 51S. Experimento HMBC (300/75 MHz,  $\text{CDCl}_3$ ) do composto 6

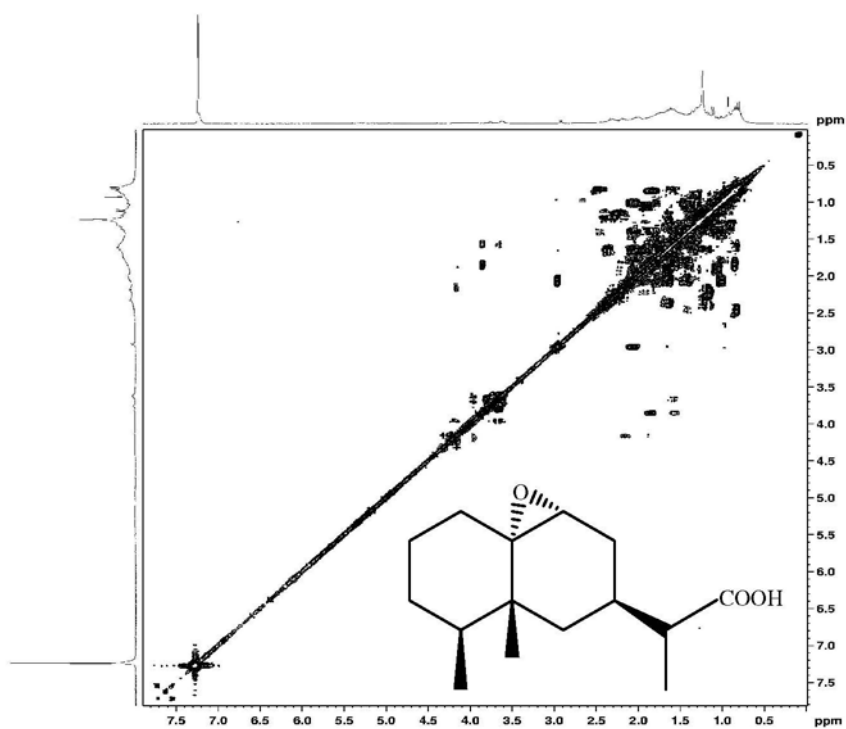


Figura 52S. Experimento COSY  $^1\text{H} - ^1\text{H}$  (300 MHz,  $\text{CDCl}_3$ ) do composto 6

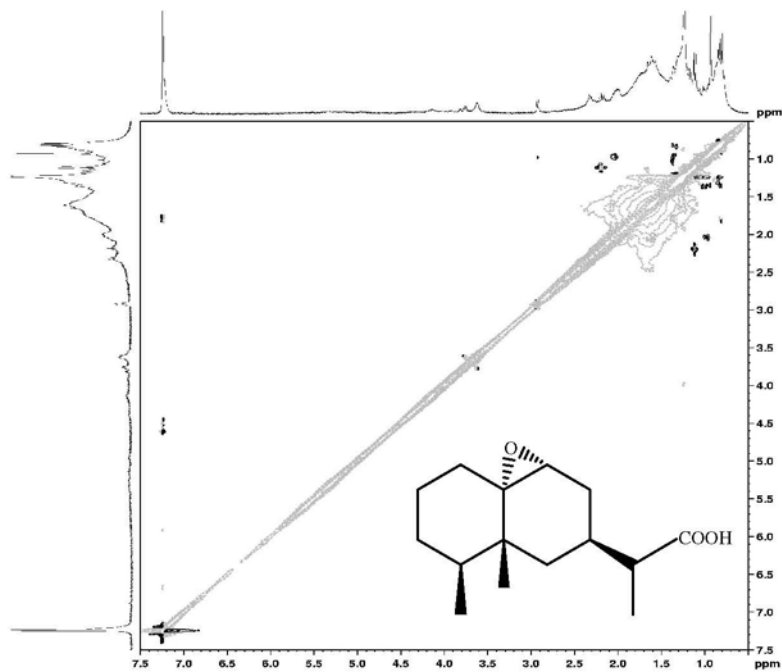


Figura 53S. Experimento do NOESY (300 MHz, CDCl<sub>3</sub>) do composto 6

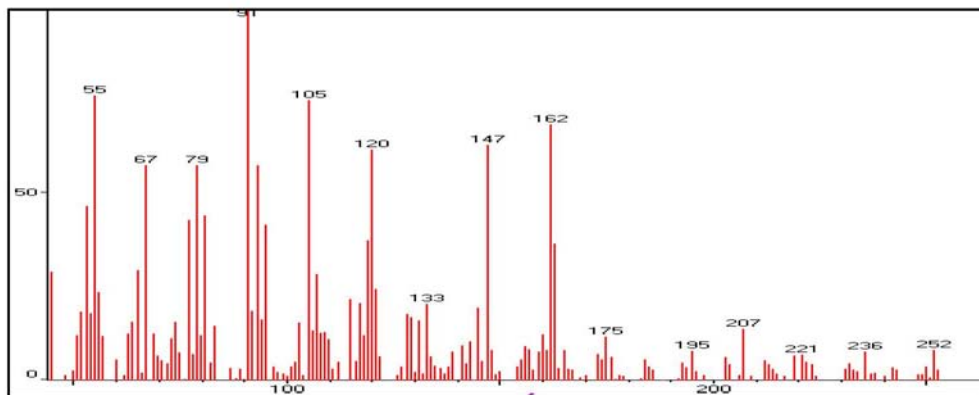


Figura 54S. Espectro de massas do composto 6

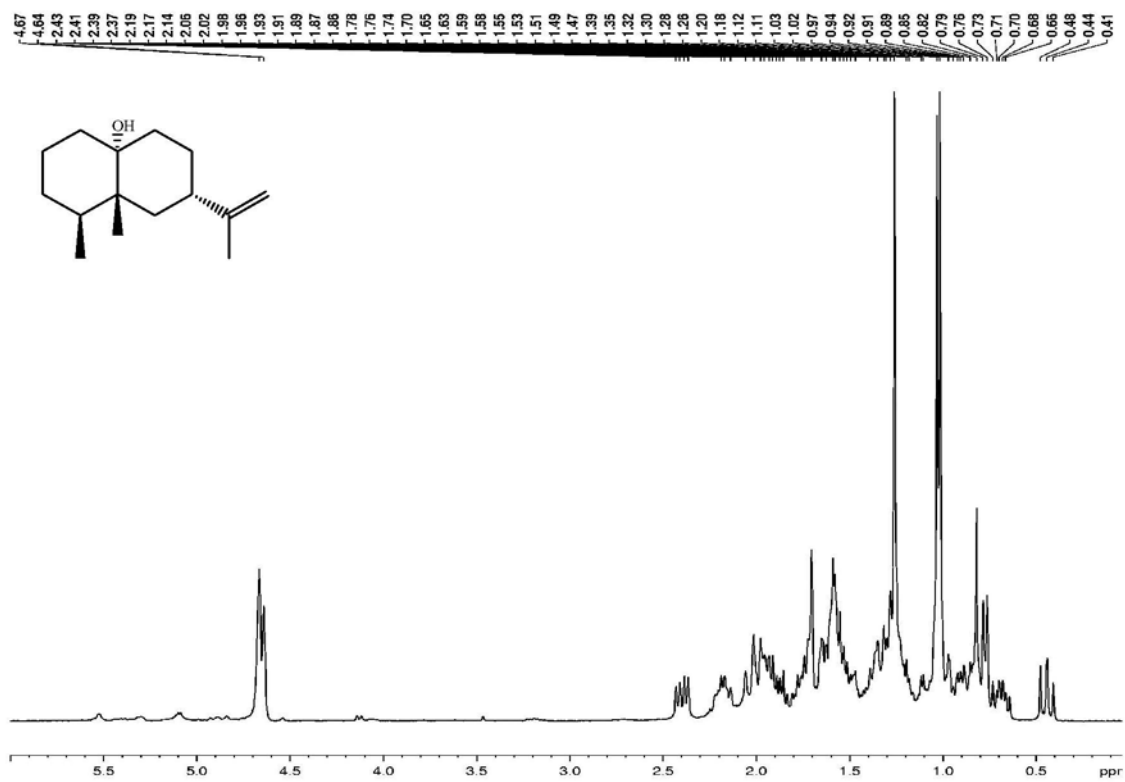


Figura 55S. Espectro de RMN  $^1\text{H}$  (300 MHz,  $\text{CDCl}_3$ ) do composto 7

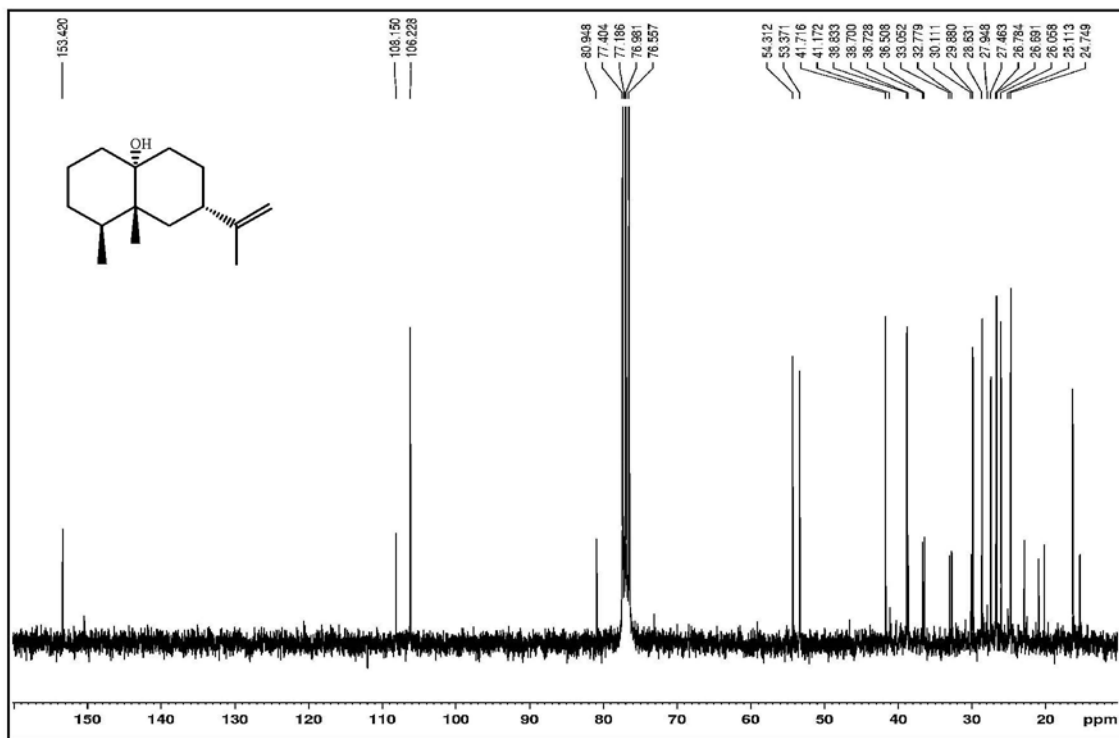


Figura 56S. Espectro de RMN  $^{13}\text{C}$  (75 MHz,  $\text{CDCl}_3$ ) do composto 7

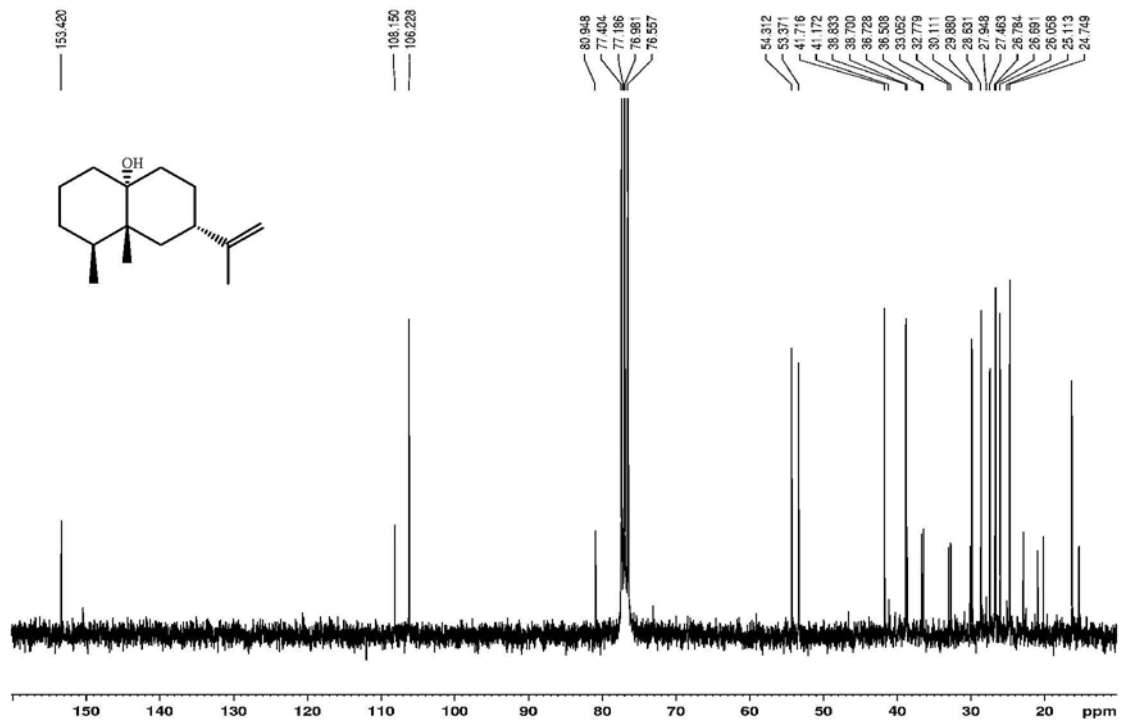


Figura 57S. Espectro de RMN  $^{13}\text{C}$  (75 MHz,  $\text{CDCl}_3$ ) do composto 7

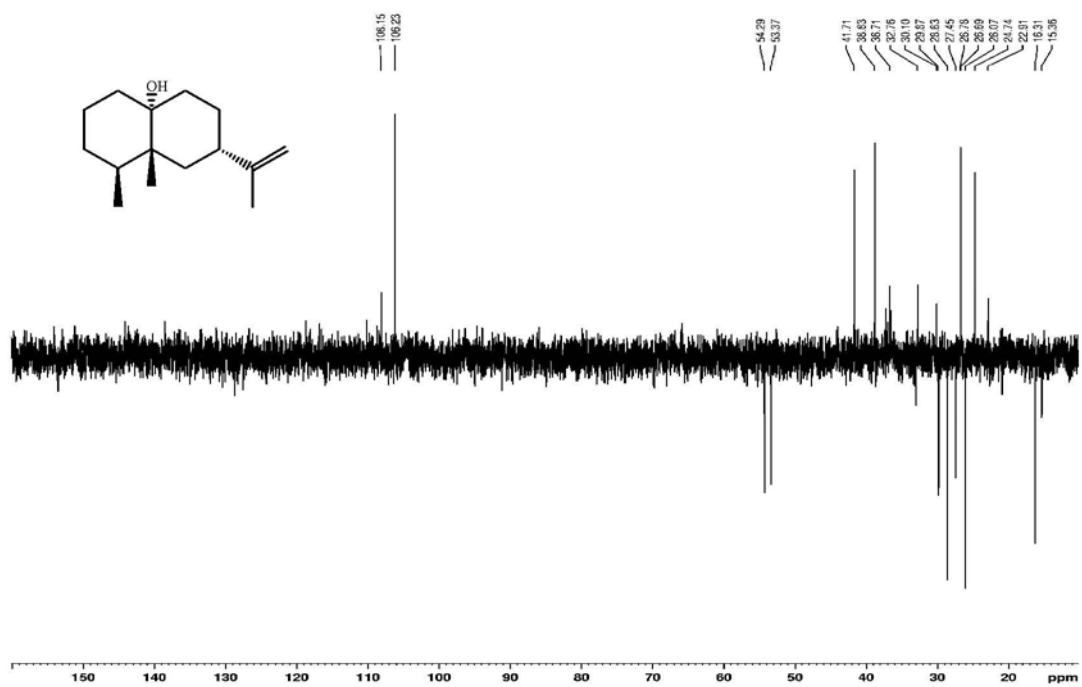


Figura 58S. Experimento DEPT  $135^\circ$  (75 MHz,  $\text{CDCl}_3$ ) do composto 7

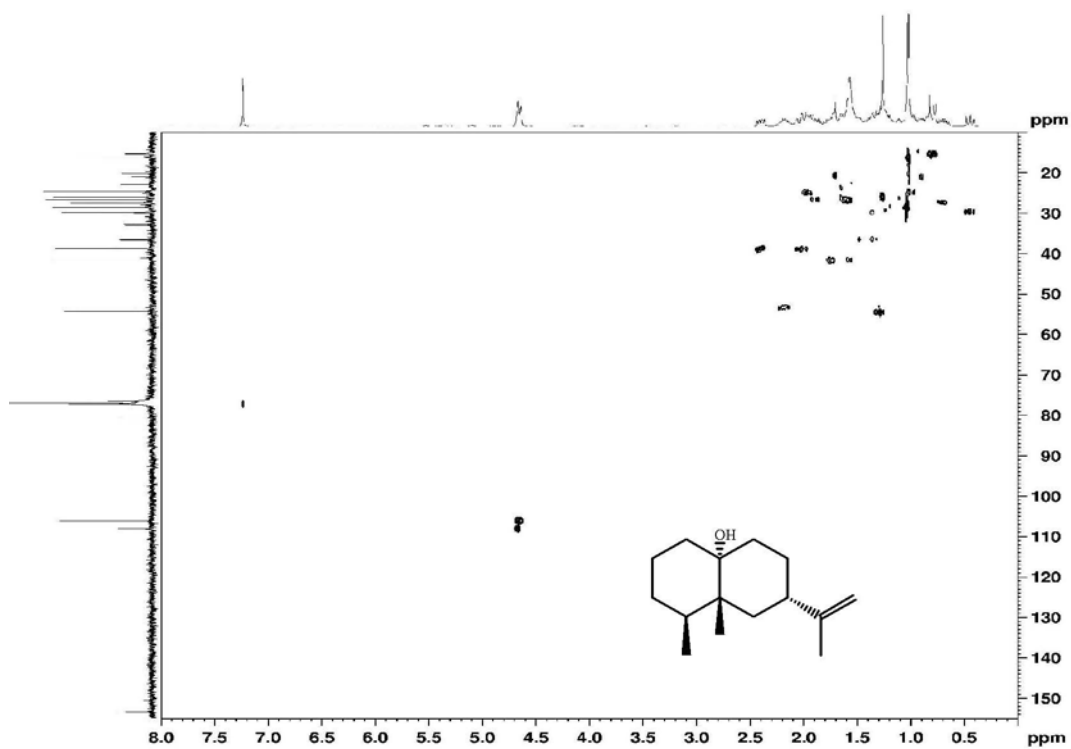


Figura 59S. Experimento HSQC (300/75 MHz, CDCl<sub>3</sub>) do composto 7

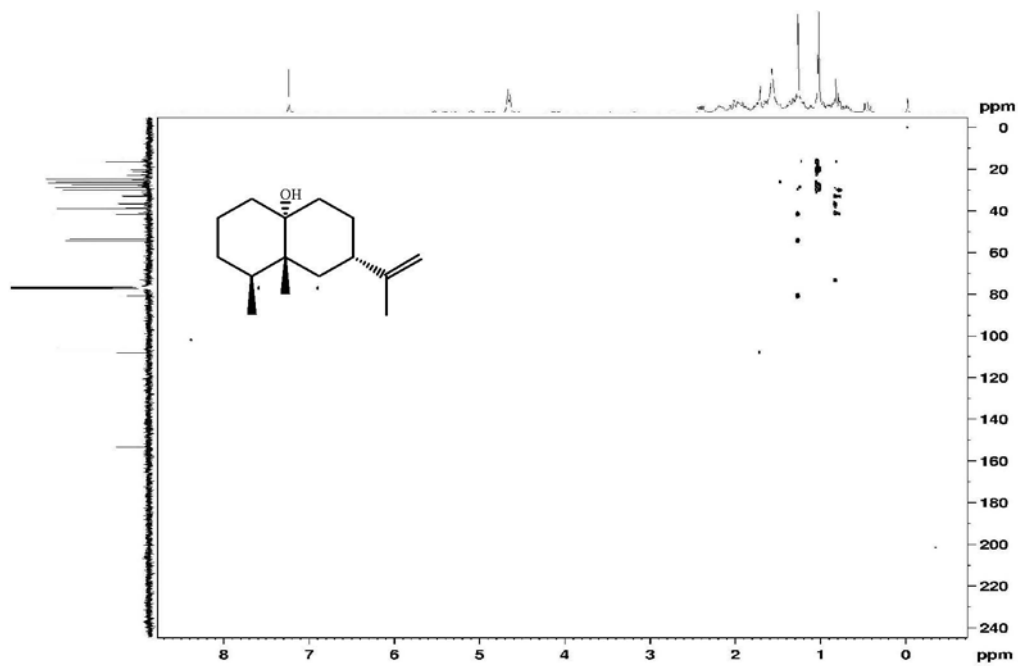


Figura 60S. Experimento HMBC (300/75 MHz, CDCl<sub>3</sub>) do composto 7

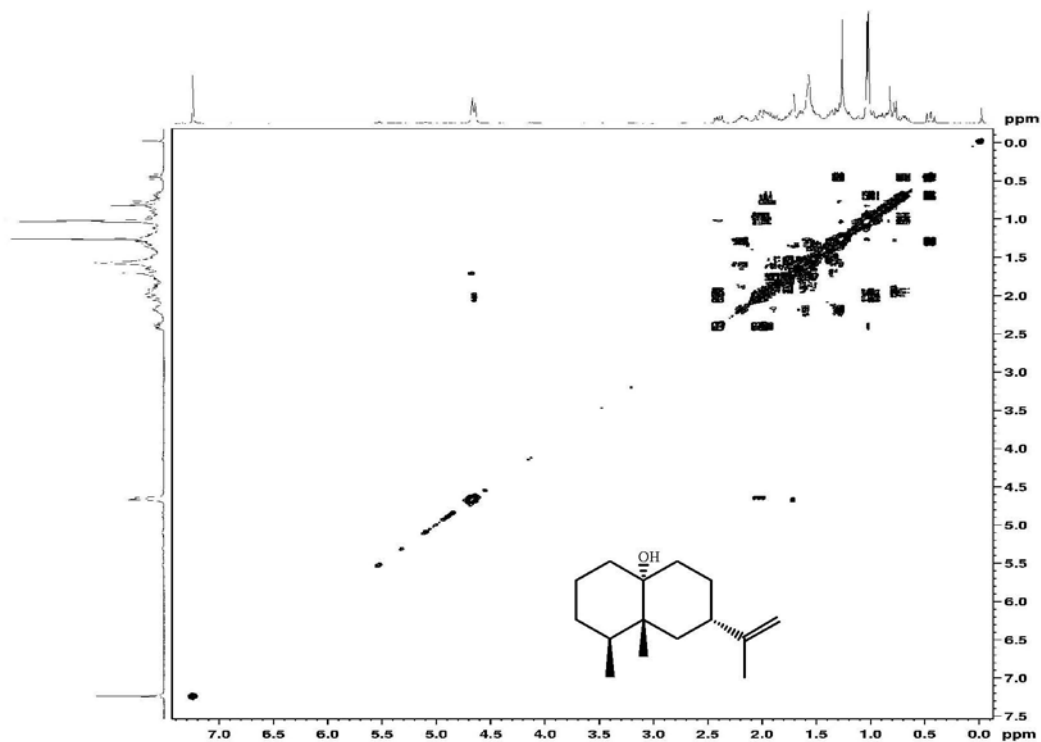


Figura 61S. Experimento COSY  $^1\text{H}$  -  $^1\text{H}$  (300 MHz,  $\text{CDCl}_3$ ) do composto 7

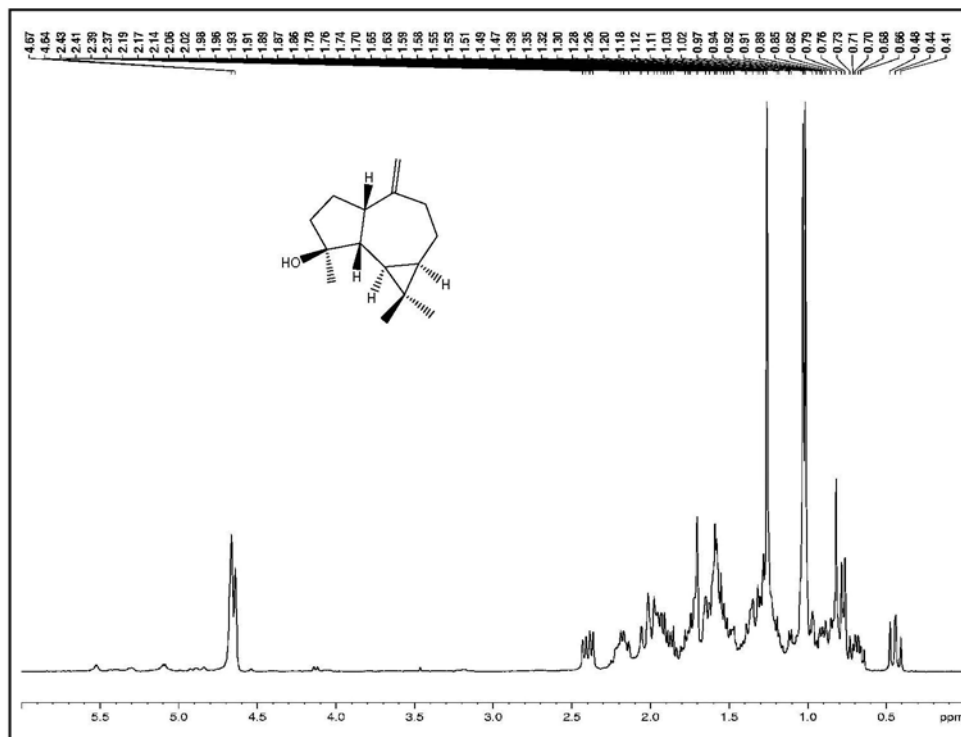


Figura 62S. Espectro de RMN de  $^1\text{H}$  (300 MHz,  $\text{CDCl}_3$ ) do composto 8

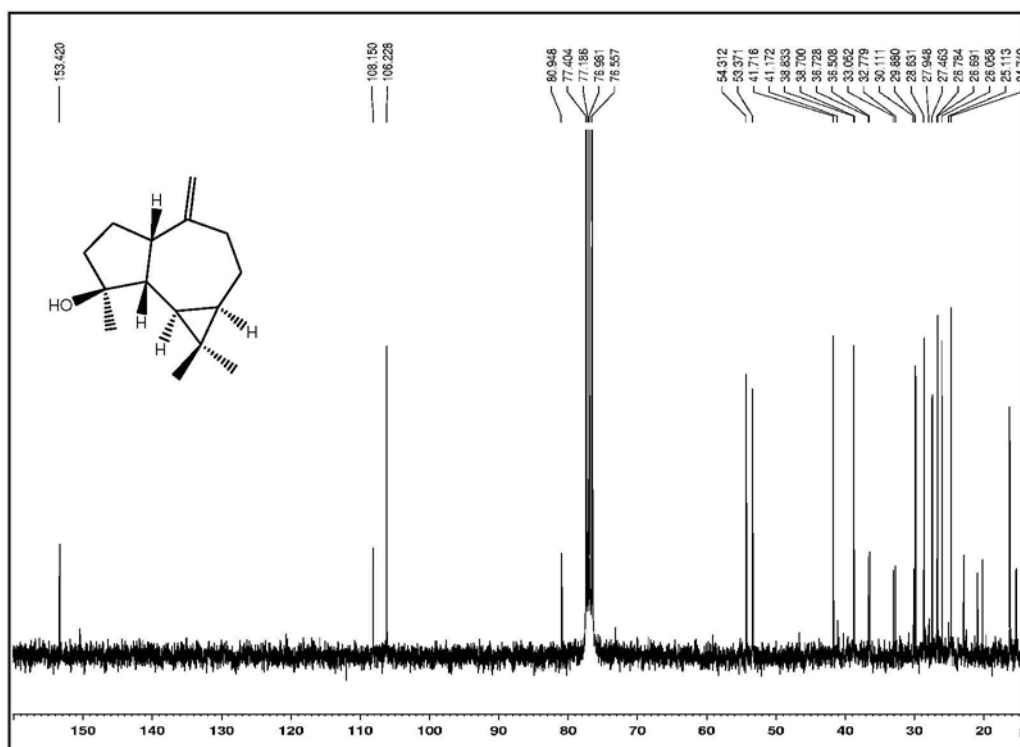


Figura 63S. Espectro de RMN de  $^{13}\text{C}$  (75 MHz,  $\text{CDCl}_3$ ) do composto 8

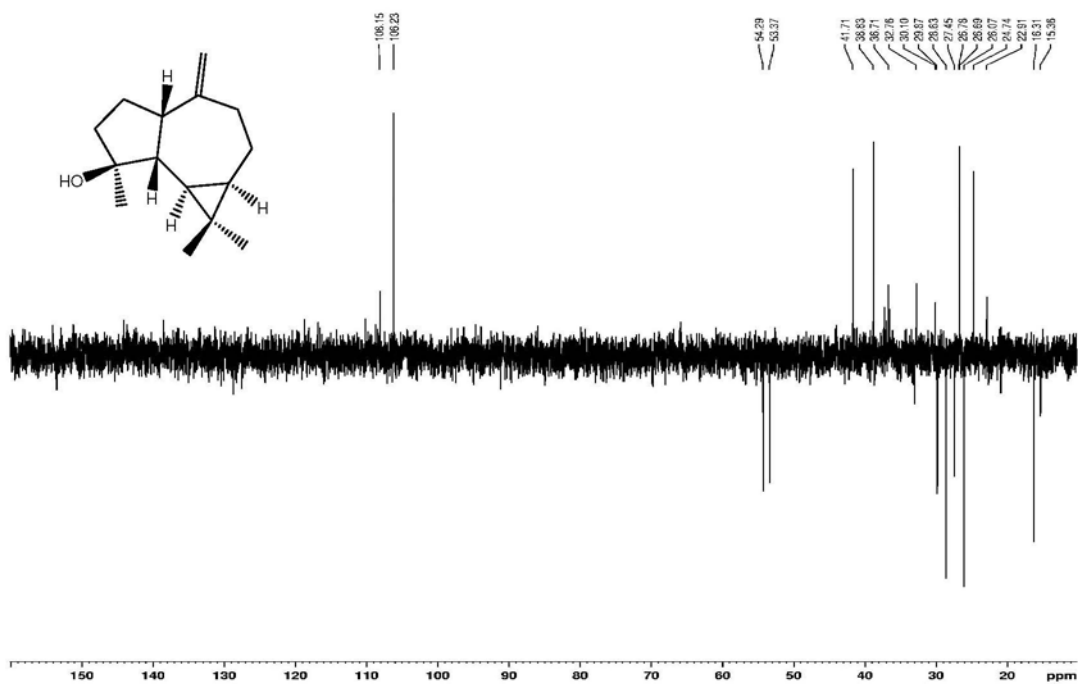


Figura 64S. Experimento DEPT  $135^\circ$  (75 MHz,  $\text{CDCl}_3$ ) do composto 8